

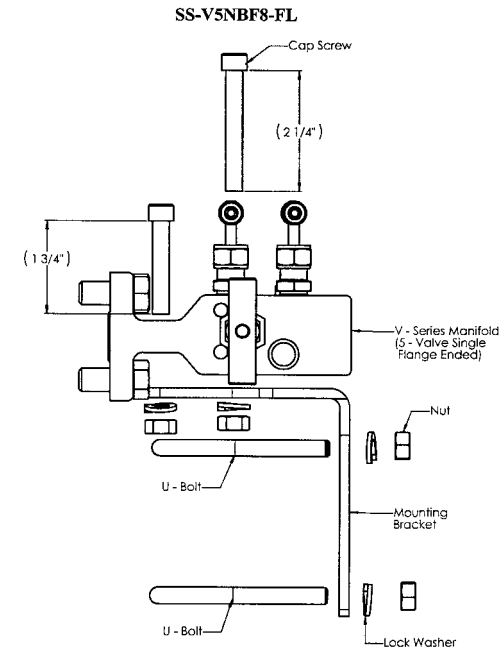
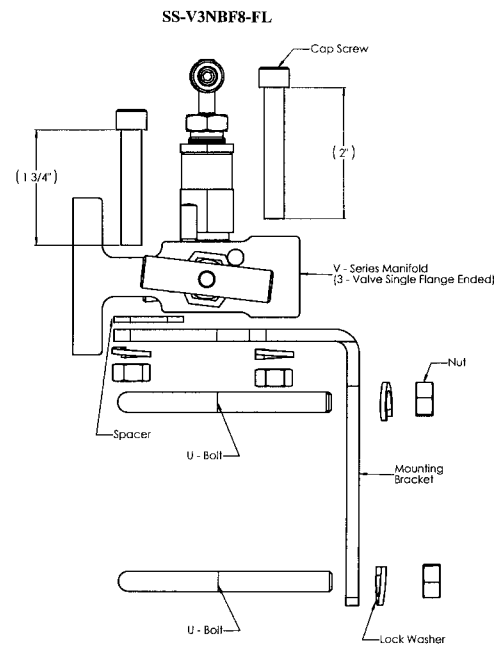
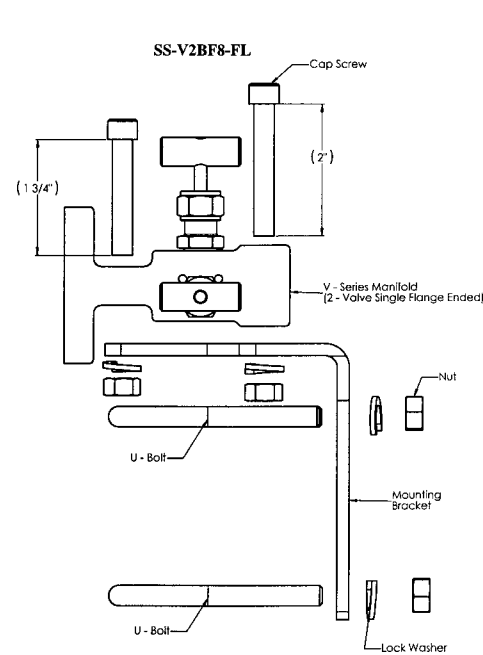
MOUNTING INSTRUCTIONS MS-INS-UNV-MB-V
FOR V-SERIES SINGLE FLANGE Revision A
ENDED 2, 3, & 5-VALVE MANIFOLDS August, 1999
 CP
 (WITH UNIVERSAL MOUNTING BRACKET)

Mounting Bracket Kit Contents:

- | | | |
|-----------|-----------------------|--------------|
| 1 Bracket | 2 U-bolts | 4 Cap screws |
| 6 Nuts | 6 Lock washers | 1 Spacer |
| | Mounting Instructions | |

1. Position the mounting bracket directly under the manifold body. Refer to appropriate drawing. Make sure the bracket and manifold bolt holes are aligned.
2. Insert a (1 3/4") cap screw towards the flange end down through the top of the manifold body, spacer (3-valve only), and mounting bracket. Insert a (2" or 2 1/4") cap screw through the non-flange end down through the top of the manifold body and mounting bracket. Install the lock washers and nuts. Torque to 160 in.·lbs. (18 N·m).
3. The mounting bracket is designed to fit 2" support pipes in either a horizontal or vertical position. This is done by positioning the U-bolts either horizontally or vertically through the hole pattern of the bracket.
4. Install the U-bolts around the pipe and through the mounting bracket. Install the lock washers and nuts. Torque to 160 in.·lbs. (18 N·m).
5. Discard unused cap screws.

Swagelok
 www.swagelok.com



©1999 Swagelok Company

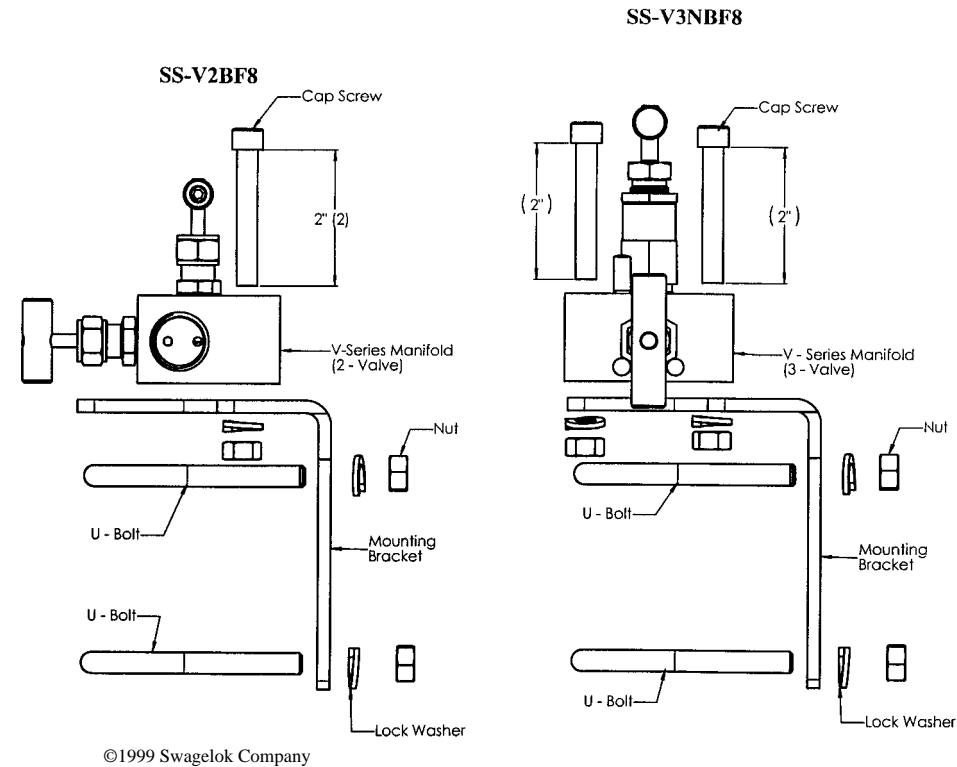
Swagelok
 www.swagelok.com

MOUNTING INSTRUCTIONS MS-INS-UNV-MB-V
FOR V SERIES BLOCK TYPE Revision A
2 AND 3 VALVE MANIFOLDS August, 1999
 (WITH UNIVERSAL MOUNTING BRACKET) CP

Mounting Bracket Kit Contents:
 1 Bracket 2 U-bolts 4 Cap screws
 6 Nuts 6 Lock washers 1 Spacer
 Mounting Instructions

1. Position the mounting bracket directly under the manifold body. Refer to appropriate drawing. Make sure the bracket and manifold bolt holes are aligned.
2. Insert 2 cap screws (2") down through the top of the manifold body and mounting bracket. Install the lock washers and nuts. Torque to 160 in.·lbs. (18 N·m)
3. The mounting bracket is designed to fit 2" support pipes in either a horizontal or vertical position. This is done by positioning the U-bolts either horizontally or vertically through the hole pattern of the bracket.
4. Install the U-bolts around the pipe and through the mounting bracket. Install the lock washers and nuts. Torque to 160 in.·lbs. (18 N·m).
5. Discard unused cap screws and spacer.

Swagelok
 www.swagelok.com



Swagelok
 www.swagelok.com