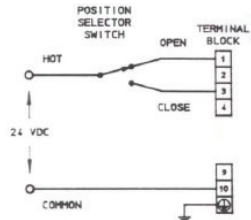


OPERATING CHARACTERISTICS

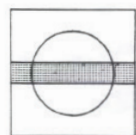
Valve Stem Position vs. Applied Control Signal

2-Way Ball Valves

Control Signal Configuration

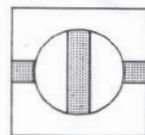
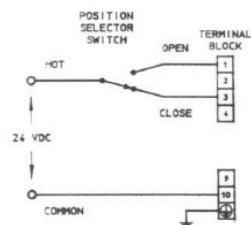
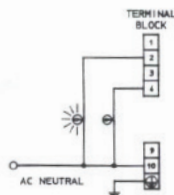


Resulting Valve Stem Position

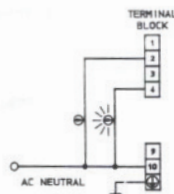


VALVE OPEN

Resulting Lamp Status

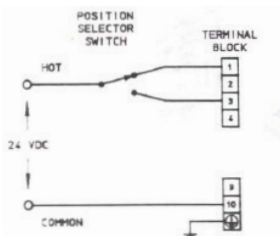


VALVE CLOSED

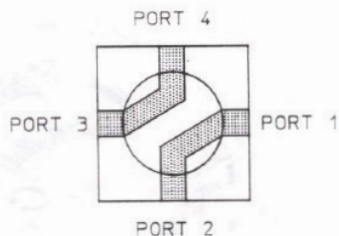


4-Way Ball Valves

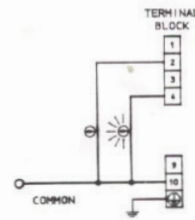
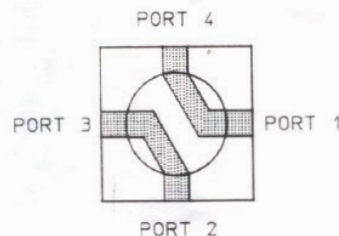
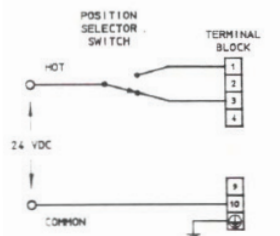
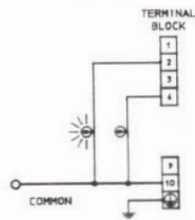
Control Signal Configuration



Resulting Valve Stem Position



Resulting Lamp Status

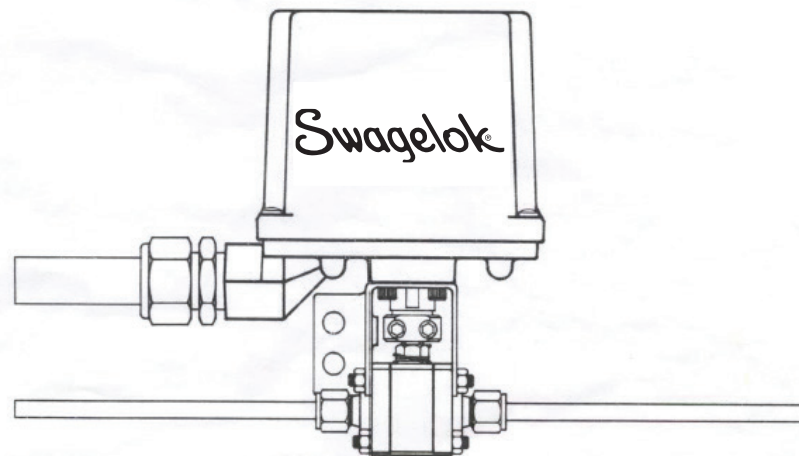


Swagelok — TM Swagelok Company
© 1989-2019 Swagelok Company
April 2019, RevD
MS-INS-141DCO

Swagelok

141 Series Type DC Electric Ball
Valve Actuators

USER'S MANUAL



THIS MANUAL COVERS THE FOLLOWING MODEL:

MS-141DCO

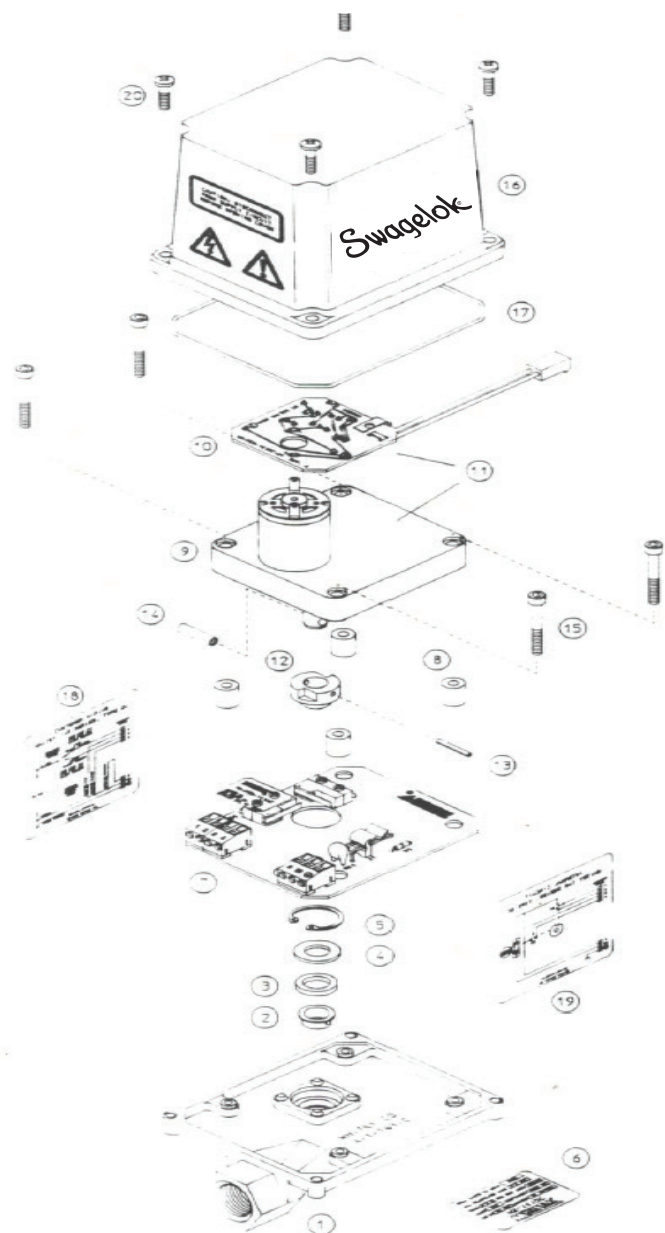
FOR USE ON 2-WAY AND 4-WAY BALL VALVES

NOTE: Please read this user's manual completely and carefully before installing or operating related Swagelok electric ball valve actuators.

Swagelok Company
Solon, OH 44139

CONSTRUCTION INFORMATION

Exploded View of the 141 Series Type DC Actuator



141DC Series

CONSTRUCTION INFORMATION

Parts List and Materials of Construction

Item	Qty	Description	Material
1	1	Base	Die Cast Aluminum
2	1	Bushing	Nylon
3	1	Shaft Seal	Buna-N
4	1	Washer	Stainless Steel
5	1	Retaining Ring	Steel
6	1	Specification Label	Polyester
7	1	Assembled PC Board	
8	4	Motor Standoffs	Nickel Plated Brass
9	1	DC Gearmotor	Stainless Steel Shaft
10	1	Assembled PC Board	
11	1	Gearmotor Assembly	Stainless Steel Shaft
12	1	Dual Cam	Nylon
13	1	Spring Pin	Stainless Steel
14	1	Roll Pin	Stainless Steel
15	4	Mounting Screws	Cadmium Plated Steel
16	1	Cover	Die Cast Aluminum
17	1	Cover Seal	Buna-N
18	1	Wiring Label	Polyester
19	1	Schematic Label	Polyester
20	4	Cover Screws	Stainless Steel
	1	User's Manual	

User Wiring and Internal Circuit

