

## Introduction

The Swagelok® Attachable Indicator is designed to provide local display of system pressure while enabling simultaneous signal transmissions to remote locations. The attachable indicator is simple to set up and operate. This 4-digit, LCD display can be used with any Swagelok S model industrial transducer with an L-plug electrical connector and a 4-20 mA output signal.

This manual is intended to provide the necessary instruction for mechanical and electrical installation and programming set-up.

## Contents

- Mechanical Installation
- Electrical Connections
- Set-up / Programming

## Mechanical Installation

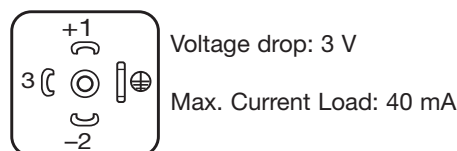
For use with Swagelok S model transducer with L-plug electrical connector and 4-20 mA output signal.

Install the Attachable Indicator to the corresponding L-plug as shown.



## Electrical Connection

The following diagram illustrates the connector pin alignment and wiring connections. The pin numbers are molded on the plastic connector housing of the transducer connector.



## Set-up / Programming

Before using the attachable display, a simple set-up programming procedure must be completed. This procedure will set the display to the range of the corresponding transducer upon which it is to be installed. All programming parameters are electronically stored in an EPROM and will not be lost in the event of a power failure.



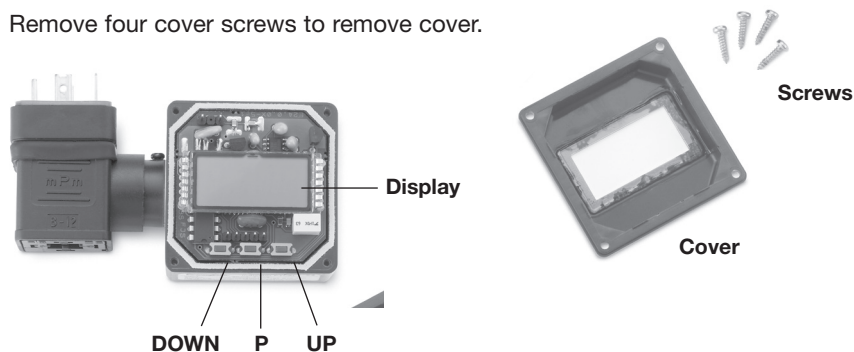
## Safety Instructions

The appropriate safety regulations must be observed when installing, putting into operation, and using these instruments. Instruments should only be installed by qualified personnel.



## Programming

1. Remove four cover screws to remove cover.



2. Press the **P** key. Display will show “dP.”
3. Press the UP or DOWN key to select the desired decimal place position.
4. Press the **P** key twice. Display will show “An 4.”
5. Press the UP or DOWN key to set display to zero.
6. Press the **P** key twice. Display will show “An20.”
7. Press the UP or DOWN key to set the span.
8. Press the **P** key twice. Display will show “LI.”
9. Press the **UP** key to activate error code display (display shows “1”) or the **DOWN** key to disable error code (display shows “0”).

### Error codes

“FE1” = exceed range

“FE2” = below range

10. Press the **P** key twice. Display will show “FILt.”  
A digital filter is available to improve the readability of the display for applications undergoing rapid pressure changes. To set the digital filtering, press the **UP** or **DOWN** key to adjust the update rate of the display.

Display	Time delay (to update pressure reading)
“ 0”	no filter
“ 1”	1.0 s
“ 2”	0.5 s
“ 3”	1.5 s

11. Press the **P** key to return to the display mode.



### WARNING

**Do not mix/interchange Swagelok products or components not governed by industrial design standards, including Swagelok tube fitting end connections, with those of other manufacturers.**

For product technical data, including materials of construction, see the Swagelok *Industrial Pressure Transducers* catalog.

*These instructions are also available in Chinese, French, German, and Japanese. Visit [Swagelok.com](http://Swagelok.com)*