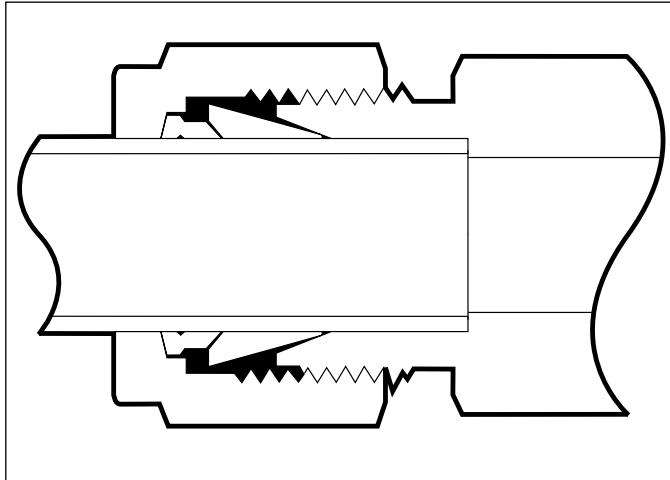
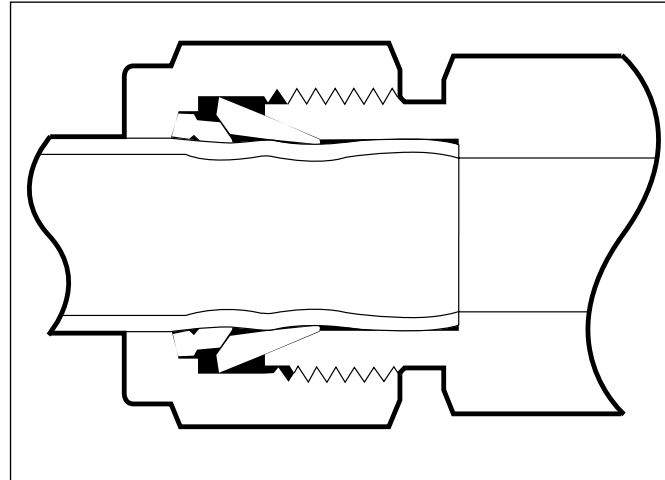


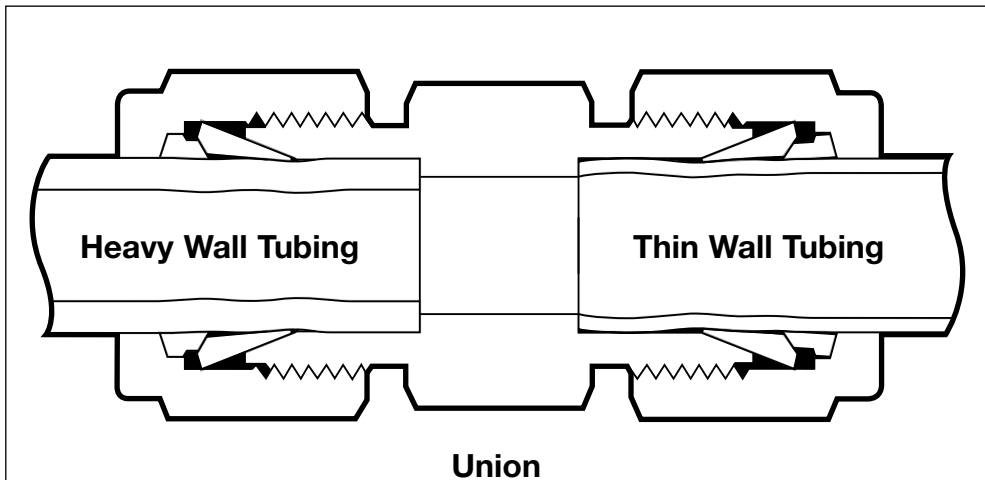
Tube Fittings



■ Finger-Tight

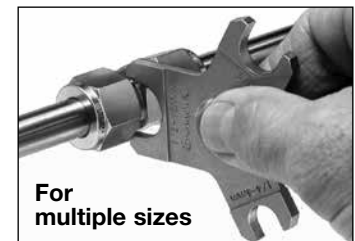


■ 1 1/4 Turns



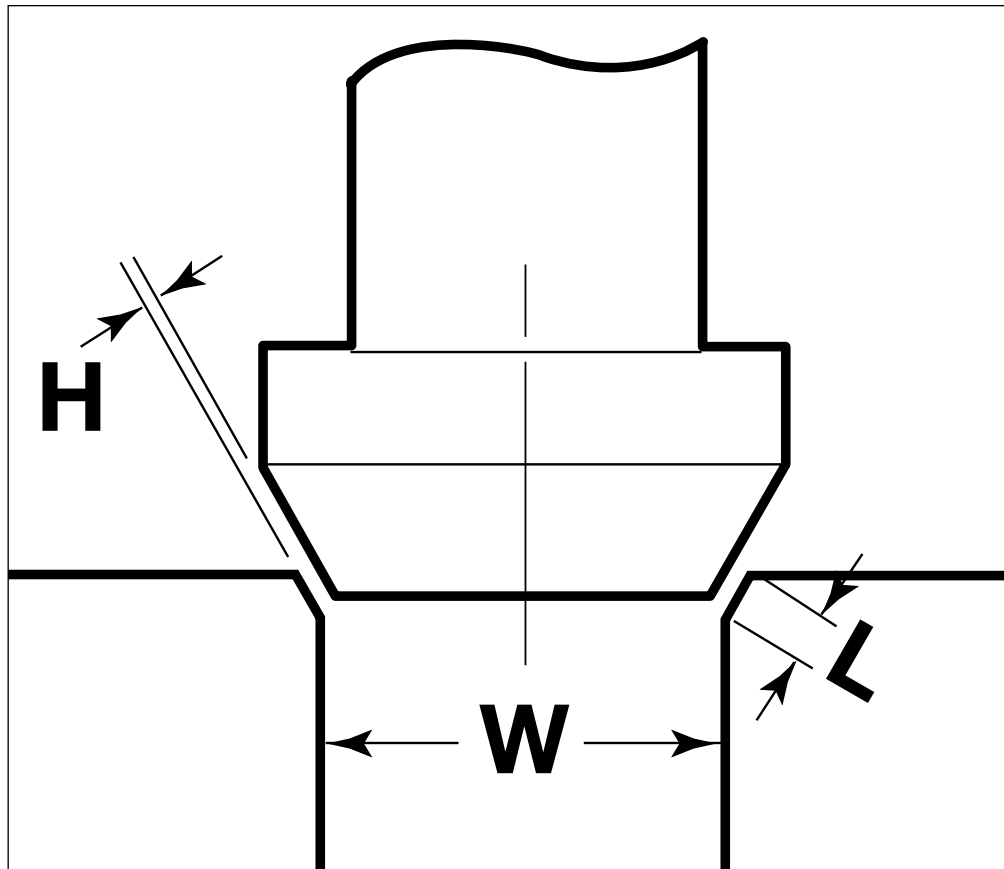
■ Compensating Action

Gap Inspection Gauges



Leakage Formula®

$$Q \approx \frac{\Delta P H^3 W}{96 \mu L}$$



Q

Leakage Rate
(ft³/s)

ΔP

Pressure Drop
(psi)

H³

Height of Gap Between
Sealing Surfaces
(in.)

W

Circumference of Seal
(in.) (π × D)

96

Mathematical
Constant

μ

Absolute Viscosity
(lb·s/ft²)

L

Length of Leakage Path
(in.)