



# A QUICK LOOK AT OUR FLUID SYSTEM SOLUTIONS

Swagelok®

# WHO WE ARE

**Leverage our global experience to address the pressures you face with 20 manufacturing centers and 200-plus sales and service centers across more than 70 countries.**

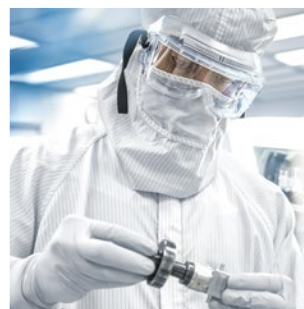
## Your Pressures – Our Solutions

We understand the pressures you face – fewer available resources, a less-experienced workforce, and new technologies. As a leading developer and provider of fluid system services, systems, and products, Swagelok has the experience, insight, and support you need.

We invite you to learn more about our solutions used in the most demanding applications across a range of industries, including oil and gas, chemical and petrochemical, semiconductor, and transportation.

### **Our Services - Our Systems - Our Products**

Swagelok's commitment to the success of our customers and our focus on innovation, quality, and reliability span seven decades. You can count on Swagelok to create the most innovative solution to help your business succeed.







## Swagelok Company - A Global Leader Since 1947

Headquartered in Solon, Ohio, U.S.A, Swagelok Company is a global developer and provider of high-quality and reliable fluid system solutions including products, assemblies and services. For more than 75 years, the components we manufacture and the services we provide have remained integral to the success of our customers, and critical to the safety of those who work in high-risk environments and the environmental protection goals of their organizations. We take these responsibilities seriously and strive to provide value beyond the expected to our customers, associates and suppliers every day.

**\$2 BILLION**  
IN ANNUAL REVENUE

**20**  
MANUFACTURING FACILITIES

**\$10 MILLION**  
ANNUAL R&D INVESTMENT

**225**  
SALES AND SERVICE CENTERS  
WORLDWIDE

**7,800** ASSOCIATES  
IN **70** COUNTRIES

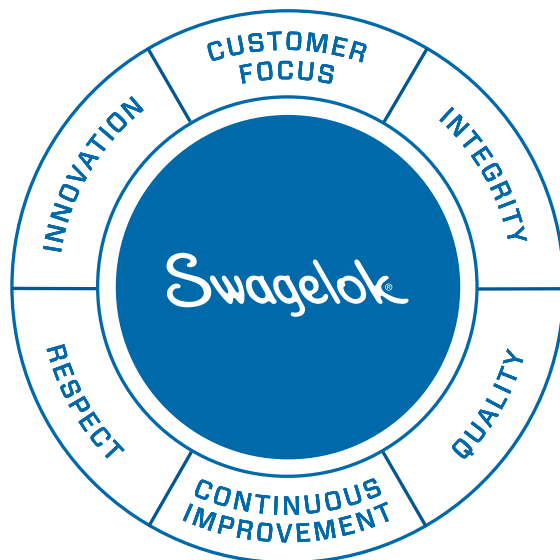
**50** APPLICATION  
& FIELD ENGINEERS

**6** GLOBAL  
TECH CENTERS

## VISION

To be the fluid system experts the world relies on.

## OUR VALUES



# OUR SERVICES

Maximize your resources to diagnose a problem, design a solution, and train your workforce.

## DESIGN & ASSEMBLY SERVICES

Come to Swagelok for **design consultation and construction of high-quality standard and configurable fluid handling and sampling systems assemblies**, from grab sampling and mechanical seal support systems to analytical subsystems and gas distribution panels.



## ONSITE SERVICES

Boost system safety, performance, and efficiency with **prioritized, actionable recommendations from experienced fluid system specialists**, knowledgeable in all manners of fluid systems, based on evaluations of your systems.



## TRAINING SERVICES

Discover a variety of training courses designed to **enhance your critical skills for developing, building, and maintaining high-performing fluid handling and sampling systems**, with topics covering everything from orbital welding to advanced tube bending, to fluid sampling subsystem design.



## RENTAL SERVICE

We understand that buying equipment like **Orbital Welders, Bench Top Benders and Facing Tools** isn't always ideal. That's why we offer a wide range of tools for rent—daily, weekly, or monthly—with on-site support and training to keep your projects running smoothly.



## ORBITAL WELDING SERVICES

Swagelok Vietnam **offers comprehensive orbital welding services, including equipment calibration, rentals, and training.** Customers can rent high-quality orbital welding systems on a weekly or monthly basis with full support and training throughout the rental period. Calibration services are available locally or at the Swagelok Factory in the U.S. to ensure equipment accuracy and compliance. Hands-on training is also provided for all skill levels, covering welding principles, system setup, troubleshooting, and operational best practices.



## SAMPLE CYLINDER INSPECTION SERVICE

Swagelok Vietnam's Sampling Cylinder Inspection Service **helps ensure the safety and performance of pressurized sampling cylinders by identifying risks like leaks, corrosion, or cylinder deformation.** The service includes a thorough visual inspection, internal checks using a bore-scope, thickness and pressure testing, and leak detection. With specialized tools and detailed reporting, it helps customers maintain equipment integrity and extend cylinder life—supporting reliable sampling operations under high-demand conditions.





# OUR SYSTEMS

Improve the quality of your samples, protect your mechanical seals, and enable accurate results.

## Analytical Instrumentation

Swagelok analytical instrumentation products bring precision and reliability to sampling systems by monitoring, measuring, and reacting to process changes. Both standard and modular products—like our pre-engineered subsystems—enhance accuracy by maintaining pressure, temperature, flow, and other analytical measurements.

## Grab Sampling Systems

Swagelok grab sampling systems enable safe, efficient sample capture—meeting your specific plant application needs. Refer to *Grab Sampling Systems Application Guide* MS-02-479, for additional information.



## Gas Distribution Systems

Swagelok grab sampling systems enable safe, efficient sample capture—meeting your specific plant application needs. Refer to *Grab Sampling Systems Application Guide*, MS-02-479, for additional information.





### Stream Selector System

Analyze multiple process streams and obtain real-time results with the stream selector modular system designed to eliminate cross-contamination of samples.

- Single compact module provides double block and bleed operation
- Integrated flow loop provides consistent outlet flow
- Built-in pneumatic actuator provides repetitive shutoff with fewer potential leak points than conventional systems
- Compact design saves cabinet space and reduces internal volume



### Miniature Modular Systems

Conduct analyses at the process line and obtain real-time results with miniature modular systems that minimize design, build, and maintenance time.

- Analytical MPC modular platform components
- Wide variety of surface-mount components available
- Easy-to-assemble, compact design



### Mechanical Seal Support

Swagelok seal support systems provide easy-to-con\_gure, locally built, and reliable solutions to help you reduce costs, save time, and improve safety. Available as seal plan assemblies or kits, all systems are based on standard API 682 plans and are customizable for your application. Refer to Mechanical Seal Support Systems API 682 Seal Plans Application Guide, MS-02-482, for additional information.

### Pre-Engineered Subsystems (PrESS)

Minimize system footprint and simplify system design with our series of pre-designed and preassembled, easy-to-install and -operate subsystems for use in all types of plants and facilities where fluids are being processed.



### Field Station Module (FSM)

Catalog - MS-02-359



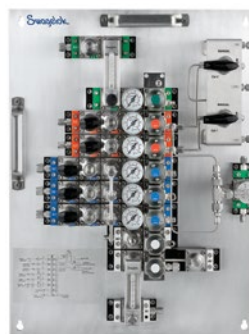
### Sample Probe Module (SPM)

Catalog - MS-02-425



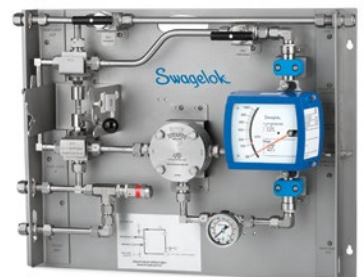
### Fluid Distribution Header (FDH)

Catalog - MS-02-358



### Calibration and Switching Module (CSM)

Catalog - MS-02-360



### Fast Loop Module (FLM)

Catalog - MS-02-361



# OUR PRODUCTS

Choose from a selection of high-quality and reliable products for



## Tube Fittings

Count on reliable, leak-tight performance as a result of our proven design, manufacturing excellence, and superior raw materials.

- Available in tube sizes 1/16 to 2 in. and 2 to 50 mm
- Wide variety of materials and configurations
- Consistent gaugeability upon initial installation
- Easy to disassemble and reassemble

**Types:** Swagelok mechanical grip-type, hinging-colleting™ tube fittings, weld, tube adapters, biopharm, dielectric, fine thread flare, flange, pipe, vacuum



## High-Purity Fittings

Ensure cleanliness with electropolished and specially cleaned fittings that feature controlled surface finishes.

- Available in sizes 1/16 to 1 in. and 6 to 18 mm
- High-purity stainless steels
- Wide variety of configurations

**Types:** VCR® metal gasket face seal, VCO® O-ring face seal, weld, Micro-Fit® weld





## Process Valves and Manifolds

Create a smooth transition from the process piping system to instrumentation in a single configuration, with fewer potential leak points.

- Integral tube fitting ball valves in sizes up to 2 in. and 50 mm
- Flanged process interface valves up to 2 in. (DN50)
- Large variety of special application valves

**Types:** Ball, needle, single block, single block and bleed, double block and bleed, manifold



## Instrumentation Valves

Depend on leak-tight performance for years of use—even in the most demanding applications.

- Wide variety of end connections including integral Swagelok tube fittings, male and female pipe end fittings, VCR metal gasket face seal fittings
- Broad operating temperature range (–325 to 1200°F, –200 to 648°C)
- Large selection of materials and sizes up to 2 in. or 25 mm
- Working pressures up to 15 000 psig (1034 bar)
- Large variety of special-application valves
- High-cycle, high-integrity sealing

**Types:** Ball, bleed and purge, check, excess flow, manifolds, metering, needle, quarter-turn plug, relief



## Packless Valves

Eliminate packing replacement and enhance clean operation with all metal seals to atmosphere.

- High-cycle, high-integrity sealing
- Low- and high-pressure models available
- All metal containment in metal valves
- Shutoff, bulk-gas distribution, and isolation service
- Stainless steel and PFA materials suited for ultrahigh-purity applications

**Types:** Bellows-sealed, diaphragm-sealed

## Medium- and High-Pressure Fittings, Tubing, Valves, and Accessories

Benefit from leak-tight gas seal and vibration resistance—even in high-risk, high-vibration environments.

- 316 stainless steel and other alloys are available to meet NACE MR0175/ISO 15156 and offshore marine environments
- Broad applications within oil and gas, chemical, petrochemical, hydrogen transportation, water jet cutting, and aerospace industries

**Fitting Types:** Medium-pressure Swagelok tube fitting with hinging-colleting™ grip type, cone and thread

**Valve Types:** Ball, needle, single block and bleed, double block and bleed, check, relief



## Regulators

Ensure consistent delivery of the right pressure across a variety of applications, with a wide range of regulator technologies.

- Instrumentation-grade and ultrahigh-purity models
- Diaphragm- and piston-sensing mechanisms
- Maximum inlet pressures up to 10 000 psig (689 bar)
- Wide variety of control ranges

**Types:** Pressure reducing, back pressure, changeover, dome-loaded, differential pressure, vaporizing, ratio-loaded



## Hose and Flexible Tubing

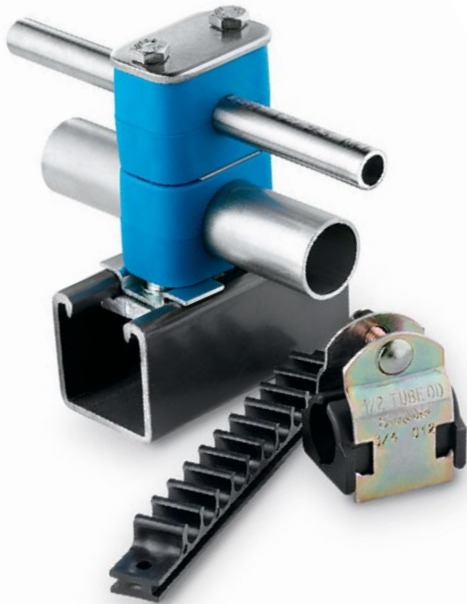
Keep your process performing safely with reliable, leak-tight connection technology, coupled with a wide variety of hoses for almost any application.

- Standard and custom lengths and end connection combinations available
- Wide variety of types and materials
- Broad operating pressure and temperature range
- Available in hose and tubing sizes 1/8 to 2 in. and 3 to 50 mm; range of fractional and metric end connections

**Types:** Metal, PTFE, PFA, vinyl, nylon, polyethylene, and rubber core materials; general-purpose, high-purity, and vacuum hose and flexible tubing







## Tubing and Tools

Choose dependable tubing in a wide variety of materials for virtually any industry or application. Tools for cutting, bending, and deburring tubing for repeatable results and leak-tight performance.

- Instrumentation and ultrahigh-purity stainless steel tubing from 1/16 to 4 in. OD and 3 to 25 mm OD
- Tube benders and tube preparation tools
- Manual and hydraulic swagers, gauges, wrenches
- Tube support system for tube and hose sizes 1/4 to 1 in. and 6 to 25 mm

**Tubing Types:** Chemically cleaned and passivated tubing, ultrahigh-purity stainless steel tubing, medium-pressure heavy-walled annealed tubing, insulated and jacketed tubing, pre-insulated tubing bundles



## Measurement Devices

Obtain accurate, on-demand pressure, temperature, and flow measurement readings.

- Vertical flow sensors
- Gauges
- Thermometers and thermowells
- Transducers
- Variable area flowmeters

**Gauge Types:** Clean dry air, ECE R110-approved, industrial, process, sanitary, panel-builder, positionable, ultrahigh-purity

**Transducer Types:** Industrial, explosion-proof, intrinsically safe



## Quick-Connects

Enable quick, simple operation without twisting, turning, or wrenching.

- Design minimizes spillage and air inclusion
- Push-to-connect design enables quick, simple operation
- Wide variety of configurations, end connections, and stem and body connectors

**Types:** Instrumentation, single-end shutoff, double-end shutoff, full-flow, miniature, PTFE-sealed



## Sample Cylinders

Protect product integrity during transport with cylinders featuring consistent wall thickness, smooth internal neck transitions for easy cleaning, and heavy-wall connections that resist flaring.

- Sizes from 10 to 3785 cm<sup>3</sup> (1 gal)
- 304L, 316, 316L, and Alloy 400
- Working pressures up to 5000 psig (344 bar)
- Variety of options including integral valves, outage tubes, color-coding, and specialty coatings

**Types:** Sampling, transportation-compliant (DOT, TPED, Transport Canada, CCC), single- and double-ended



## Filters

Remove liquid or particulate contaminants reliably with repeatable results.

- Available for liquid and gas service
- All-welded, inline, and tee-type configurations
- End connection sizes 1/8 to 3/4 in. and 3 to 12 mm
- Wide variety of filter media available
- Ceramic filtering technology for ultrahigh-purity applications

**Types:** Coalescing, particulate, high-purity





## Leak Detectors, Lubricants, and Sealants

Detect, eliminate, and avoid leaks before they impact system performance.

- Snoop® liquid leak detectors
- Blue Goop™, Pure Goop™, Silver Goop™, and Vac Goop™ lubricants
- PTFE tape, PTFE-free sealant, and SWAK® anaerobic thread sealants



## Welding System

Achieve cost-effective and repeatable tungsten arc welds with a lightweight, portable welding power supply and weld heads. Consistent, efficient orbital welding system combines precision and control with easy-to-use touchscreen operation. Meets ASME-BPE welding standards.

**Types and Accessories:** Traditional and high-purity power supplies, weld heads, fixture blocks, side plates, plenum, and collets

Solutions in Action

Swagelok® point-of-use (SPU)



Swagelok® gas panel (SGP)



Grab Sample Module (GSM)



Grab Sample Cylinders (GSC)



Grab Sample Liquid (GSL)





## ABOUT SWAGELOK VIETNAM

Our first representative office was established in 2004. After 10 years and a change in ownership, Swagelok Vietnam has become an independently owned and operated sales and service center in 2013.

**Swagelok Vietnam, trading as M.J. Vietnam Co., Ltd**, was established in 2013 as a leading solution provider of fluid system technologies. We are proud to be the only Swagelok authorized sales and service center servicing customers throughout Vietnam and Cambodia.

We provide the highest quality fluid system products, assemblies, and services that enable our customers to achieve their goals consistently and confidently, even in the most demanding and critical situations.

In Vietnam, our teams of highly skilled and dedicated associates are here to help.  
If you need to speak to us please contact a member of the team at:

### Ho Chi Minh city head office and warehouse

532A Le Trong Tan Street, Tay Thanh Ward  
Ho Chi Minh, Vietnam  
(84) 28 3842 0504 Phone  
(84) 28 3842 0704 Fax



### Ha Noi office and warehouse

TT3-B30, Van Quan Residence Zone  
Ha Dong Ward, Ha Noi City, Vietnam  
(84) 24 7107 6688 Phone





[vietnam.swagelok.com](http://vietnam.swagelok.com)  
Hotline: +84 (0)936420804

Scan by Zalo



0936 42 0804  
Hotline