

Swagelok Pittsburgh | Tri-State Area

Your Local Swagelok® Fluid-System Solutions Provider

Ineffective and inefficient tube-bending practices destroy site and project productivity and profitability.

Your Challenge

A major Pipeline account generated far too much scrap, with too much downtime, when making tight ¾" tube bends between two heavy-wall pipe connections – and, due to pressing deadlines, was unable to send operators to a Swagelok instructional class at our Pittsburgh Training Center.

Your Solution

Swagelok Pittsburgh | Tri-State Area brought its renowned Tube Bending Safety Essentials course to the customer's worksite. But first, we huddled with the supervisor to fully understand what his team needed to accomplish in the field. That collaboration led to us bringing our manual benchtop tube bender, tubing, and accessories to help the customer make expert, accurate bends beyond ½".

Once onsite, our Strategic Services Specialist and Trainer worked directly with the customer's team to take precise measurements and create simple-to-follow bend sheets. He also showed them how to confidently use a benchtop bender for large-diameter tube bends. In addition, we taught them how to make proper bend angles – after which they then cut back a piece of tube to ensure correct fit on short tubing runs.



Your Healthy Bottom Line:

Customer completed work on time, on plan, and on budget...while gaining the necessary skills on the job to make complex large tube bends here forward.

Your Challenge

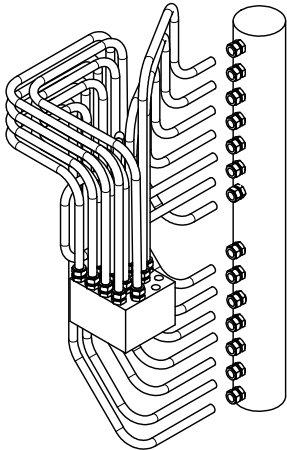
A key Power Plant customer had severely leaking 1" plumbing from a geared flow divider to a turbine fuel oil supply manifold: a constant fire hazard and source of frequent, costly maintenance and overall poor turbine performance and efficiency.

Your Solution

Swagelok Pittsburgh | Tri-State Area brought its tube bending expertise to the customer's facility. While there working, we simultaneously conducted relevant portions of our Swagelok Advanced Tube Bending course for the system's technicians as part of our innovative two-phase plan to replace the faulty and dangerous plumbing.

Phase 1: Turbine #1, Field Fitting

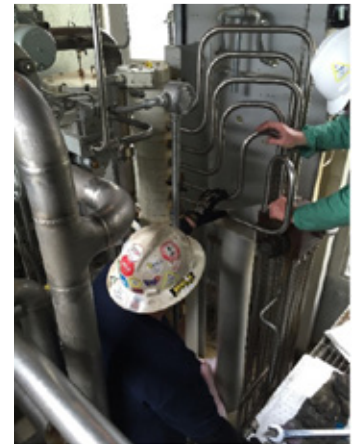
- Performed a comprehensive site-wide fluid-system evaluation
- Made precise system geometry measurements, including 14 tubing runs
- Applied field data to design improved plumbing routing
- Created bend sheets for enhanced system aesthetics and greatly reduced scrap
- Pre-bent multiple tube runs, leaving extra-long ends to be field fit
- Swaged all plumbing onsite
- Enabled customer's technicians to practice and perfect the Swagelok bending method in their actual work environment...under our Trainer's guidance
- Applied lessons learned on Turbine #1 to site's other three turbines



Optimum Plumbing Solution



Making Threaded Connections



Field Fitting, Turbine #1

Phase 2: Turbines #2-#4

- First, we executed all bending and swaging for such plumbing in our shop
- Then, we shipped all subsequent pre-fabricated, easy-to-install-as-needed, uniform assemblies to customer

Your Healthy Bottom Line:

Customer now has complete confidence bending large-diameter tubing – thus creating an inherently safer, more productive and efficient workplace... with dramatically less scrap and downtime labor.

P: 412.761.3212 **W:** pittsburgh.swagelok.com



@SwagelokPGH



SwagelokPittsburgh



Swagelok Pittsburgh | Tri-State Area

Swagelok®

Swagelok Pittsburgh | Tri-State Area

All service marks and trademarks shown are owned and registered by Swagelok Company. © 2021 Swagelok Company. www.swagelok.com