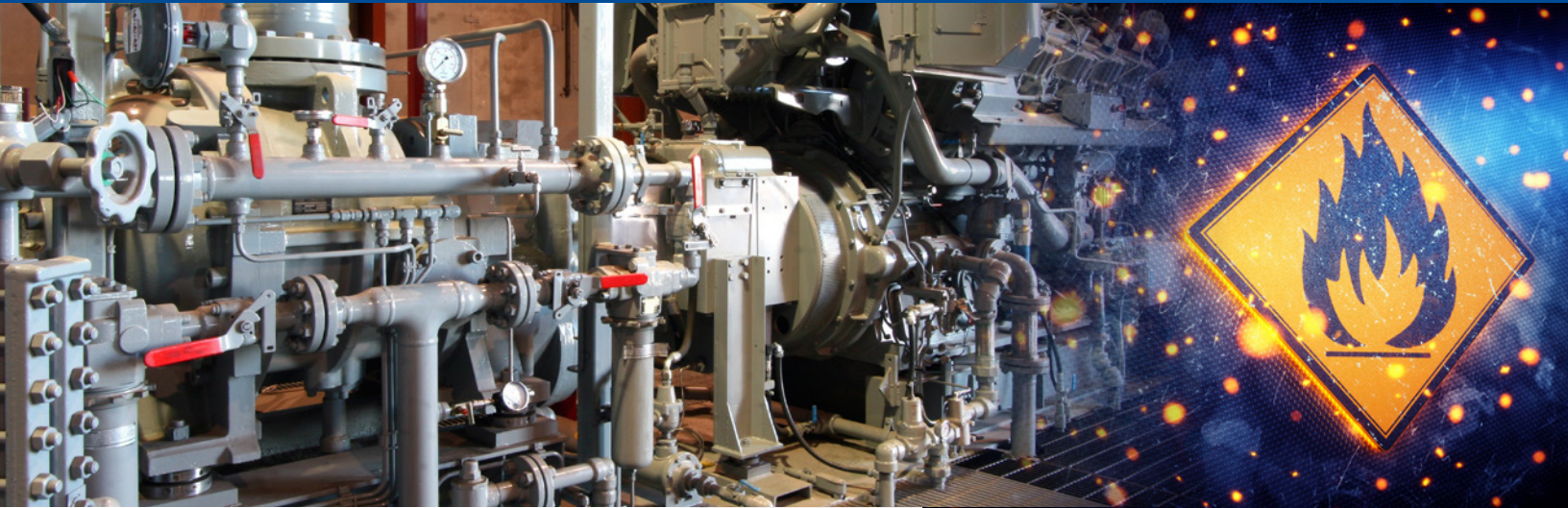


Swagelok Pittsburgh | Tri-State Area

Your Local Swagelok® Fluid-System Solutions Provider

Safety First: Innovative Coolant Plumbing System Upgrades



Your Challenge

If you use Glycol-based coolant to cool your natural gas engines, you could potentially be faced with fire hazards, unplanned station downtime, and/or excessive maintenance schedules.

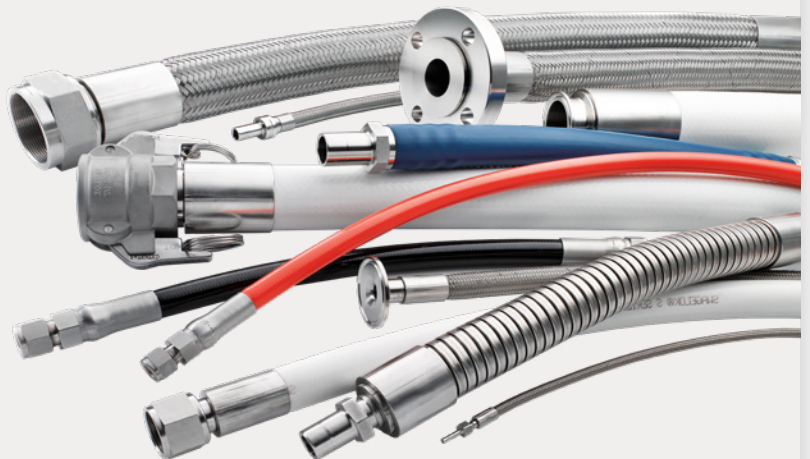
Here's why:

1. Extreme engine vibration can cause many traditional Hose offerings to wear and fail – and that means harmful emissions.
2. OEM face seal fittings may force you to employ multiple adapters, thus significantly increasing the likelihood of Hose failure.
3. Fixed-end connections can often twist and turn, compromising Hose installation reliability.
4. When radiant engine heat reaches 900° F, thermal cracking can produce Hose pinhole leaks – spraying glycol on your operator and/or equipment.

Your Swagelok Solution

Swagelok Pittsburgh | Tri-State Area, working closely with several local compressor operators, now offers innovative coolant plumbing system upgrades to dramatically lessen your chance of leakage and flash fires.

Our field-proven and patented Tube Fitting Adapter, with a specially designed end that swivels, makes the installation of a three-layer, vibration-dampening Hose safe, simple, and speedy. Plus, a top-quality cover protects our Hose from even the most extreme engine heat.

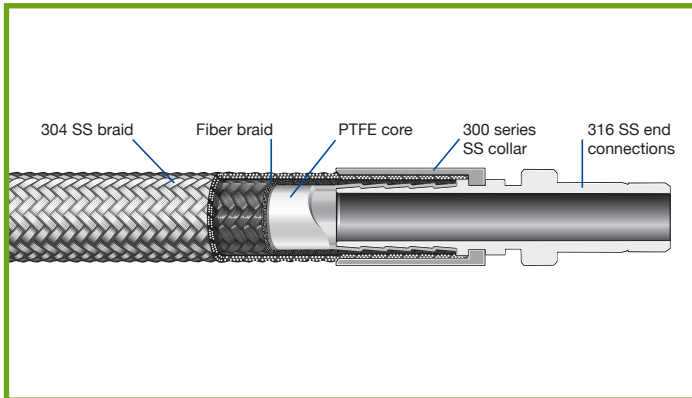


SWAGELOK'S HOSE SOLUTION

delivers optimum Natural Gas Engine safety, performance, and efficiency!

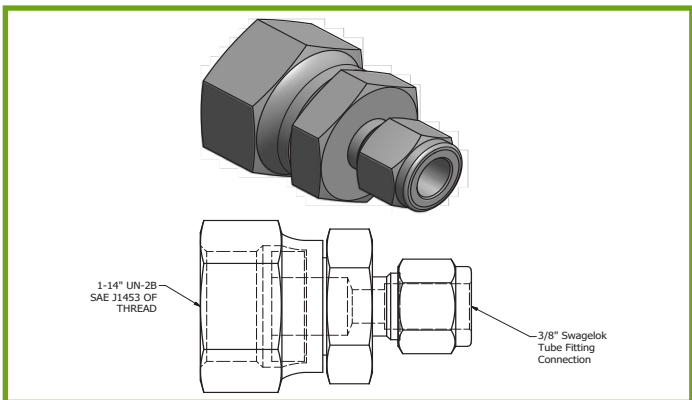
Problem: Extreme Engine Vibration

Swagelok's three-layer Hose substantially improves uptime and Hose service life.



Problem: Multiple Engine Face Seals

Connections greatly minimized by **Swagelok's face seal-to-tube fitting design**.



Problem: Engine Manifold Heat

Swagelok Hose covers deliver secure, trusted engine protection up to 1,000° F – while the Swagelok Tube Adapter Connection eases installation.



Learn more how we can help you realize a healthier Bottom Line:

Contact Zach Barefoot
Midstream & Construction Specialist

zach.barefoot@swagelok.com • 412.439.1708



P: 412.761.3212 W: pittsburgh.swagelok.com

@SwagelokPGH

SwagelokPittsburgh

Swagelok Pittsburgh | Tri-State Area

All service marks and trademarks shown are owned and registered by Swagelok Company. © 2021 Swagelok Company. www.swagelok.com

Swagelok

Swagelok Pittsburgh | Tri-State Area