

KNOWN.

SWAGELOK TUBE FITTINGS:

Your First Choice for safe, proven, top-quality, reliable leak-tight performance – no matter how challenging your Fluid-System challenges or operating conditions.



- Unique hinging/colleting action provides **optimum direct tube gripping support.**
- Front ferrule's burnishing /polishing action creates concentrated contact zones on the tube and body bevel for an **ultra-strong gas seal.**
- Colleting region ideally isolates stress risers at the tube grip to **resist bending, deflection, and vibration.**
- **Easy to install:** No threading, flaring, soldering, brazing, or welding required – just your standard wrenches.
- **Continuously and rigorously tested** – and backed by the most comprehensive book of Product Test Reports in the industry.

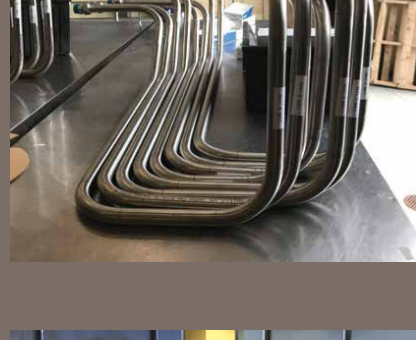
KNOW.

SWAGELOK PITTSBURGH | TRI-STATE AREA ALSO DELIVERS:



Expert Custom Fabrication:

Simple assemblies to large, complex instrumentation panels, with all work performed by our Swagelok-Certified technicians and all work covered by the Swagelok Limited Lifetime Warranty.



Technical Training:

Fitting Installation & Tube Bending Safety Essentials, Tube Fitting Inspection Essentials, Advanced Tube Bending, Hose Essentials, or Valve Essentials classes offered at your site or at our state-of-the-art Training Center.



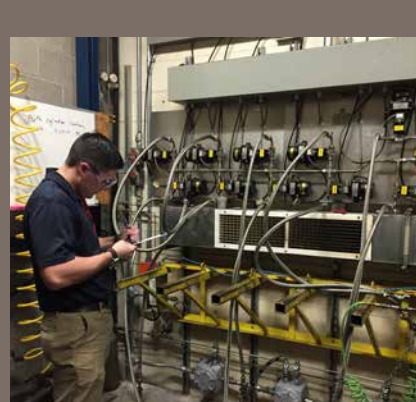
Technical Application Support:

We'll come to your facility or project location to help troubleshoot your system and/or to assist you with Swagelok product selection.



Hose Advisories and Energy Evaluations:

We'll conduct a thorough audit of your critical gas or air lines or current Hose practices; we'll then issue a report detailing your areas of leakage (Energy) or areas for improvement regarding Hose selection, sizing, routing, and storage.



Inventory Management:

Industrial vending machines that provide complete visibility, security, and accountability around your valuable Swagelok componentry spend.



Genuine Swagelok Gear Rentals:

Benchtop Benders, Multi-Head Hydraulic Swagers, and Orbital Welders for short-term or infrequent projects.



Swagelok Pittsburgh | Tri-State Area:

100%-committed to significantly improving your Fluid-System safety, productivity, efficiency, and profitability via a powerful portfolio of **Premium Products** and **Strategic Support Services!**

Our Promise:

In each and every customer engagement and interaction, no matter how challenging your application or operating conditions, we will deliver premier-quality Swagelok Fluid-System Product Solutions and value-added Strategic Services that will make you safer, more productive, more efficient, and more profitable.



WE CAN HELP YOU SAVE TIME, MONEY, AND WORRY:



Swagelok Pittsburgh | Tri-State Area
49 Meade Avenue
Pittsburgh, PA 15202
412.761.3212



You are receiving this email as a valued contact of Swagelok Pittsburgh | Tri-State Area.

[Preferences](#) | [Unsubscribe](#)