

## People are Talking About Us

Read how Swagelok premier fluid-system Product and Support Service solutions have saved our customers significant time, money, and worry, especially in the most challenging applications.

## Delivering Under HIGH PRESSURE

A major Oil and Gas company required componentry that would provide unfailing, ultra-reliable, leak-tight performance while withstanding 15,000 psi operating pressures on the firm's nine chemical injection skids – each with 1,500 connections (or 1,500 potential leaks points per skid). Finding – and then fixing – any significant leakage had always meant dozens of hours in manpower, weeks of downtime, and, most importantly, production delays of at least four months.

Swagelok **FK-Series** Gaugeable, Compression

**Tube Fittings**, made of 316 stainless steel, for temperatures up to 1,000° F, and for working pressures up to 20,000 psi, feature a two-piece design, with a female body and a preassembled cartridge containing a male nut and color-coded front and back ferrules for simple and proper installation.

These components were employed in conjunction with compact Swagelok **FKB-Series** Trunnion-Style Low-Emission, Low-Torque **Ball Valves** – also for working pressures up to 20,000 psi – and available with 2-way or 3-way flow patterns and multiple mounting options.



## BOTTOM LINE:

The site experienced **ZERO leaks** after more than 6,000 cycles of hydrostatic testing, saved over 160 man-hours of maintenance labor, and realized up to 100 times more valve cycles versus past tooling and efforts.

## PROBLEM TO PROFITABILITY

Leaking gas panels aren't simply dangerous to workers and valuable site assets – but lead to excessive operational and maintenance costs as well.

A large Chemical company, employing dozens of specialty gases in its Research and Development functions, needed to determine exactly how those gases – running through more than 200 lines – were being absorbed into different automotive-industry materials.

Job one, of course, was to properly contain the gases to effectively remove any risk to the two engineers in charge of the project. In addition, the firm wanted to streamline the facility's collective fluid systems for improved productivity and efficiency.

Swagelok® **Source Inlets (SSI)** and **Gas Panels (SGP)** were installed to secure reliable connection points between the high-pressure source gases and the balance of the remaining media in the overall gas distribution system. (Swagelok also offers innovative Changeover and Point-of-Use panels.) These new, highly configurable designs delivered:

1. Dedicated – and safer – purging lines
2. Far easier access to critical relief valves
3. Significantly simplified maintenance
4. An optimized workflow because of the standardized panel use



**Unnecessary valves/componentry and, thus, potential leak points were eliminated!**

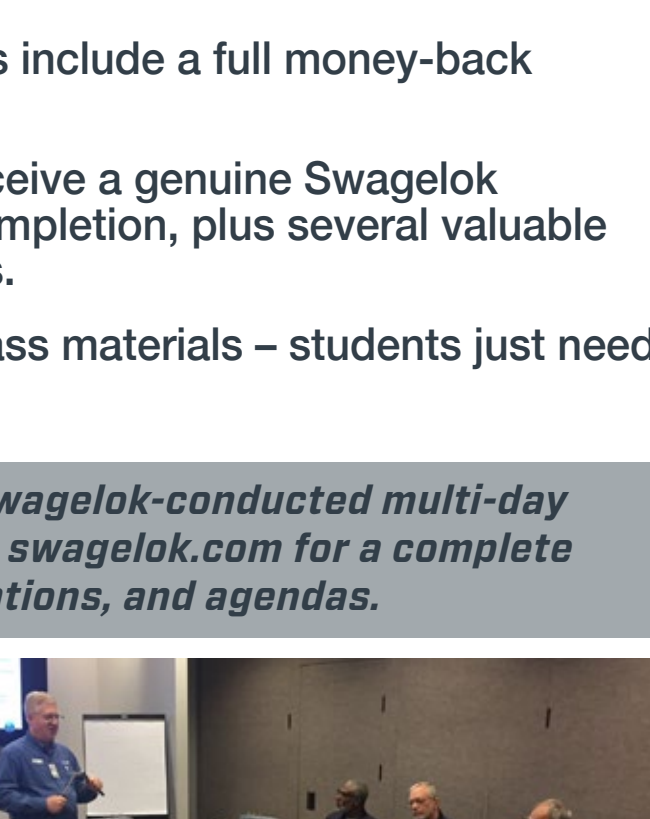
## BOTTOM LINE:

Swagelok **Gas Distribution Panels** are not only keeping the site safe, but require so little maintenance, the two supervising engineers can now devote more of their busy workday to other essential tasks – thus making the company more profitable – with a substantially reduced carbon footprint – over the long term.

## PREMIUM-QUALITY, Leak-Tight Componentry

TUBE FITTINGS | VALVES | GAUGES | HOSES | TUBING | REGULATORS | MANIFOLDS

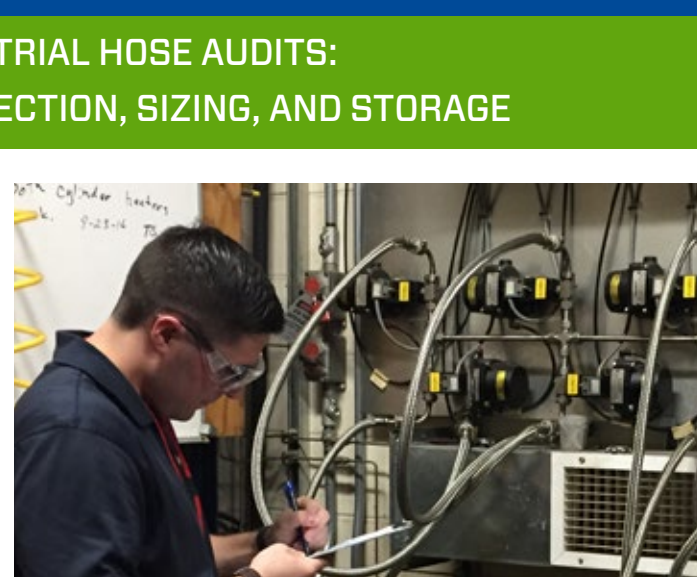
Since 1947, Swagelok products have provided unparalleled reliability, durability, and performance in even the most challenging fluid-handling applications and environments. No matter what your industry – Oil & Gas, Chemical, Petrochemical, Steel, Power, or Applied Research – we offer unique solutions and support to help relieve your most demanding operational pressures: knowledge drain, diminished resources, system inefficiencies, and worker/site safety.



## MASTERFUL Custom Fabrication

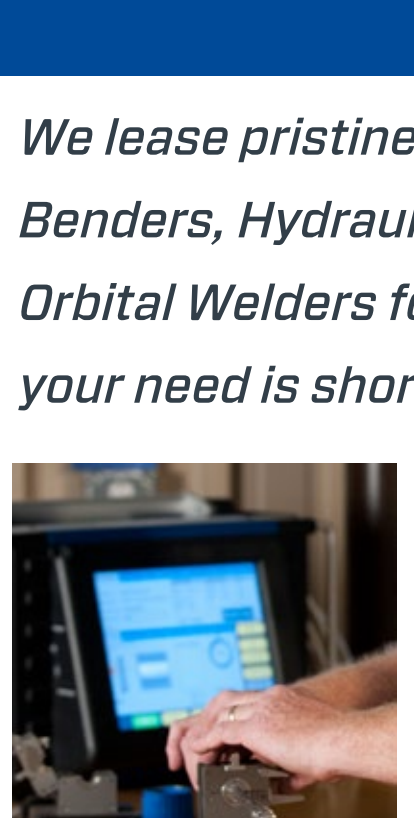
PANEL/SKID DESIGN AND BUILD | SIMPLE TO COMPLEX ASSEMBLIES

- state-of-the-art, 5,000-square-foot working and staging area
- 5-ton overhead crane, with 18-foot clearance
- climate-controlled environment
- dedicated swaging, bending, coiling, orbital welding, and kitting stations
- complete testing, inspection, cleaning, and packaging stations



## COMPREHENSIVE Safety Training

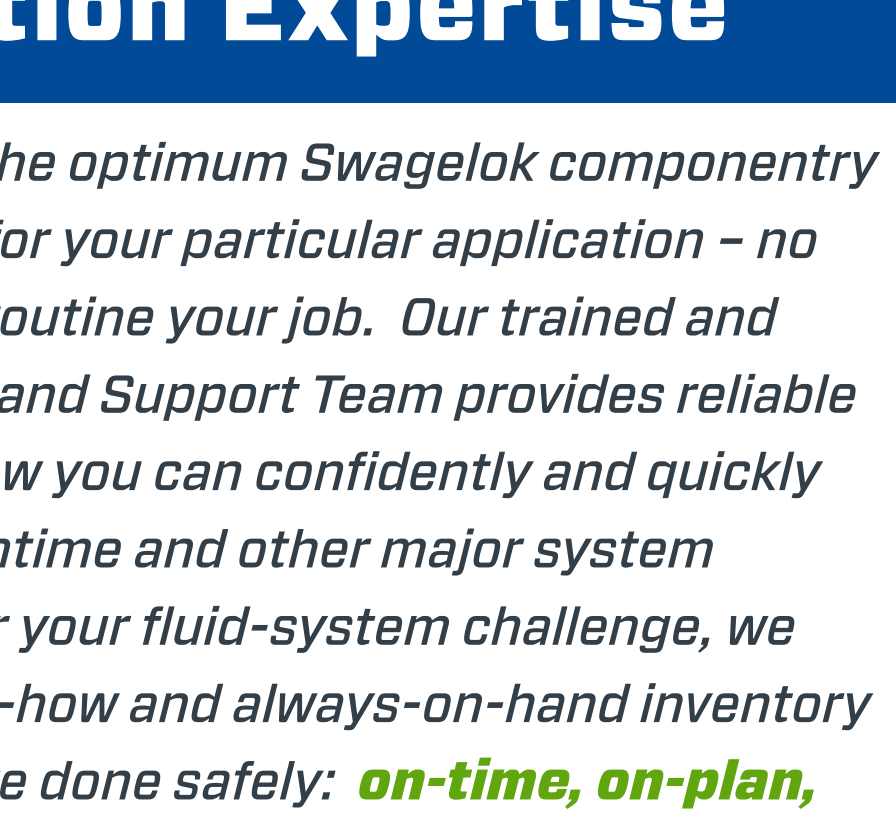
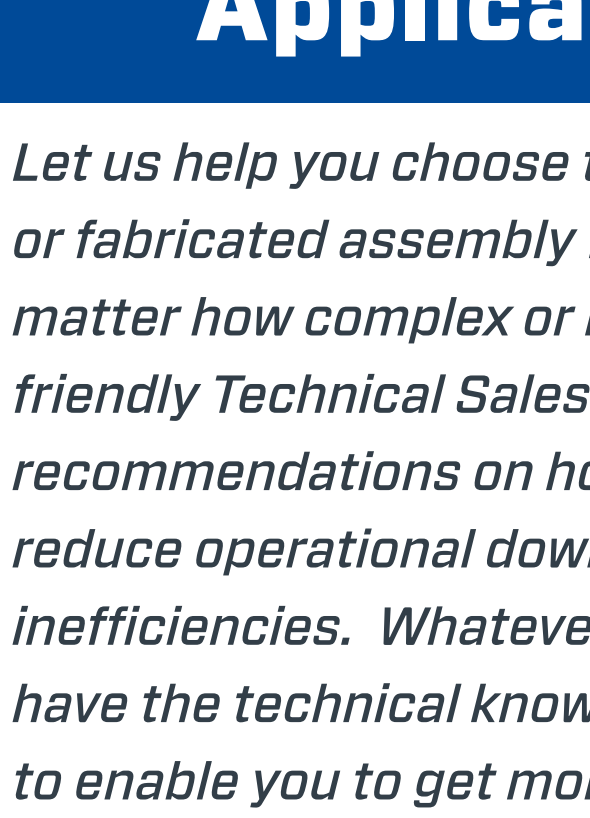
TUBE FITTING INSTALLATION & TUBE BENDING | FITTING INSPECTION | HOSE ESSENTIALS | VALVE ESSENTIALS | ADVANCED TUBE BENDING | SAMPLING SYSTEM INSTALLATION | PROCESS ANALYZER SAMPLING SYSTEMS



**Mike Gagel**  
Strategic Services Specialist

- We offer an unparalleled array of pertinent and timely course titles.
- We can bring our training directly to your site or project location.
- All of our classes include a full money-back guarantee.
- All graduates receive a genuine Swagelok Certificate of Completion, plus several valuable take-home items.
- We supply all class materials – students just need to show up!

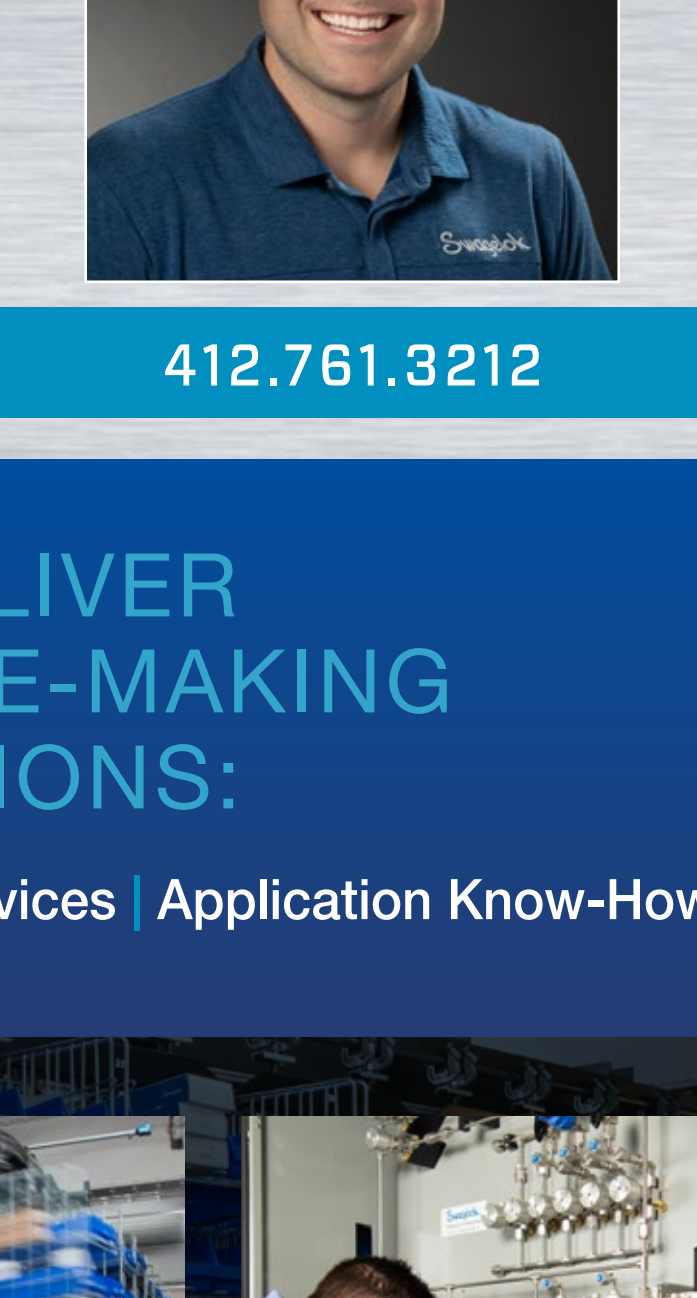
We also facilitate your enrollment in Swagelok-conducted multi-day Sampling System training events. Visit [swagelok.com](http://swagelok.com) for a complete list of class titles, times, locations, and agendas.



## TRUSTED SYSTEM Evaluations & Advisories

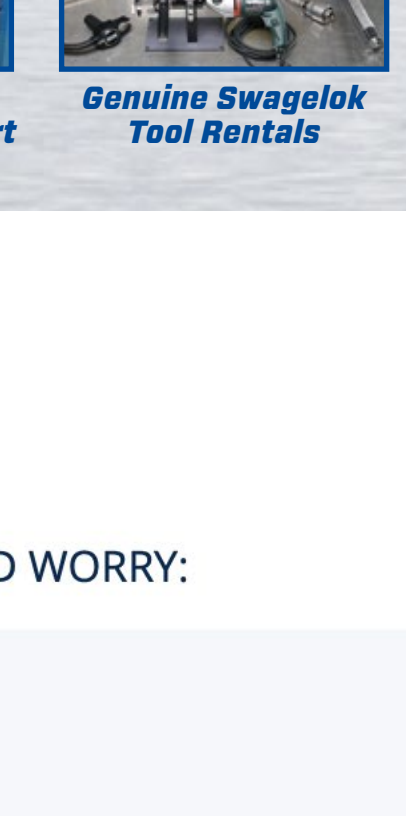
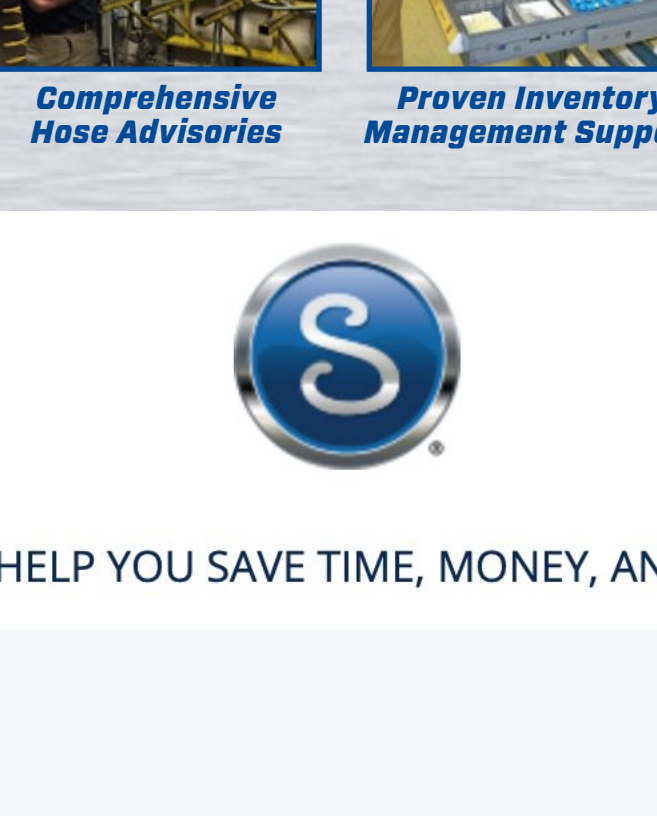
MEDIA LEAKAGE | INDUSTRIAL HOSE AUDITS: BEST PRACTICES FOR SAFETY, SELECTION, SIZING, AND STORAGE

Our **Energy Management Specialists** will conduct an on-site survey to identify and tag the leaking tube fitting, pipe, and valve connections that put your workers, equipment, end product, and overall profitability at substantial risk. Our certified **Hose Advisors** will closely audit your current hose usage to determine if your hose types, lengths, and end connections are ideally suited to your specific applications.



## ALWAYS-AVAILABLE Tool Rentals

We lease pristinely maintained Benchtop and Electric Tube Benders, Hydraulic Multi-Head Hydraulic Swaging Units, and Orbital Welders for daily, weekly, or monthly use. Why buy new if your need is short-term or infrequent?



## PROVEN Application Expertise

Let us help you choose the optimum Swagelok componentry or fabricated assembly for your particular application – no matter how complex or routine your job. Our trained and friendly Technical Sales and Support Team provides reliable recommendations on how you can confidently and quickly reduce operational downtime and other major system inefficiencies. Whatever your fluid-system challenge, we have the technical know-how and always-on-hand inventory to enable you to get more done safely: **on-time, on-plan, and on-budget!**



For complete information, contact:

**Gary Osman,**  
Swagelok Field Engineer



[gary.osman@swagelok.com](mailto:gary.osman@swagelok.com)

412.761.3212

## WE DELIVER DIFFERENCE-MAKING SOLUTIONS:

Products | Strategic Support Services | Application Know-How



**Industry-Best Componentry**

**Masterful Custom Fabrication**

**Expert Safety Training**

**Extensive Energy Evaluations**

**Unparalleled Application Knowledge**

**Comprehensive Hose Advisories**

**Proven Inventory Management Support**

**Genuine Swagelok Tool Rentals**



WE CAN HELP YOU SAVE TIME, MONEY, AND WORRY:

[Facebook](#) [Twitter](#) [LinkedIn](#) [YouTube](#)

Share Swagelok Pittsburgh | Tri-State Area  
492 Meade Avenue, Pittsburgh, PA 15202  
412.761.3212

All service marks and trademarks shown are owned and registered by Swagelok Company. © 2023 Swagelok Company. [www.swagelok.com](http://www.swagelok.com)

You are receiving this email as a valued contact of Swagelok Pittsburgh | Tri-State Area.

[Preferences](#) | [Unsubscribe](#)