

Liquid Bottle Sampler

GSL1

Simple Liquid Sampler without Purge

Panel Recommendations

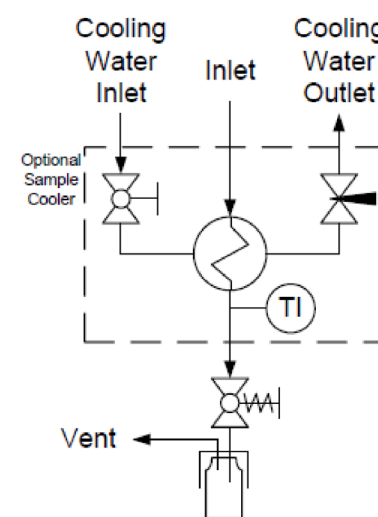
- Used in general liquid sampling applications.
- Recommended for non-toxic liquids.
- Sample system has a single process connection to dispense the sample into a bottle.

Swagelok®

Swagelok London



Flow Schematic



Liquid Bottle Sampler

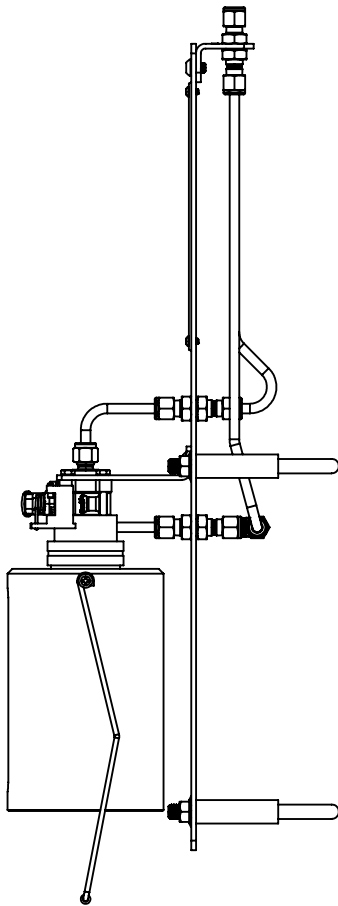
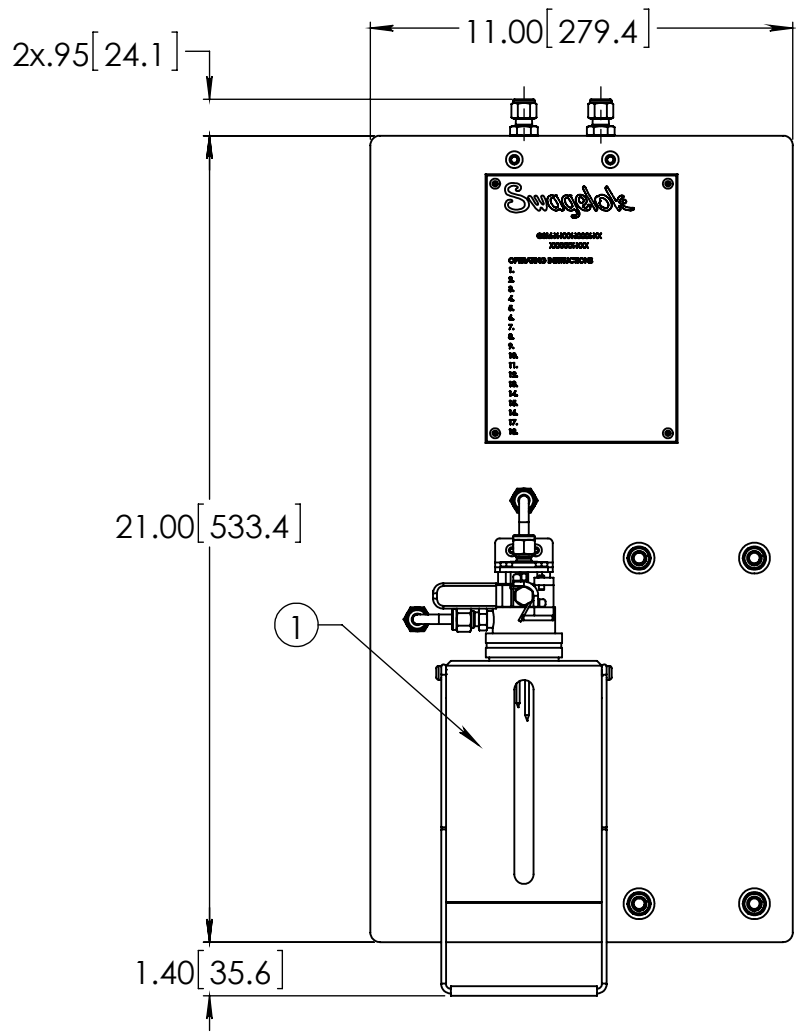
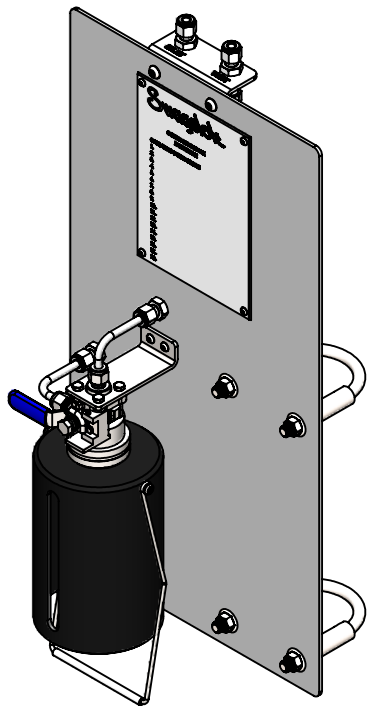
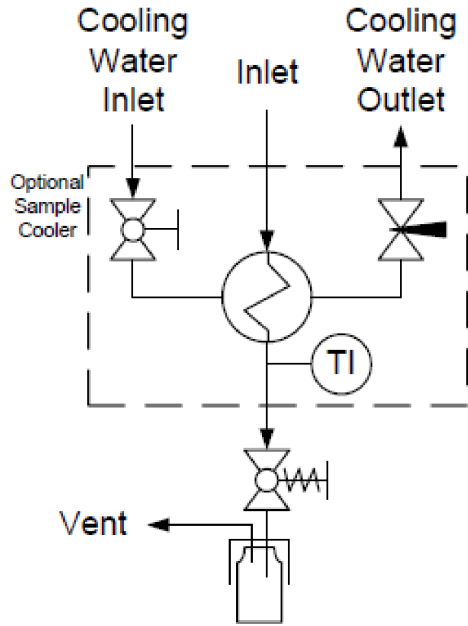
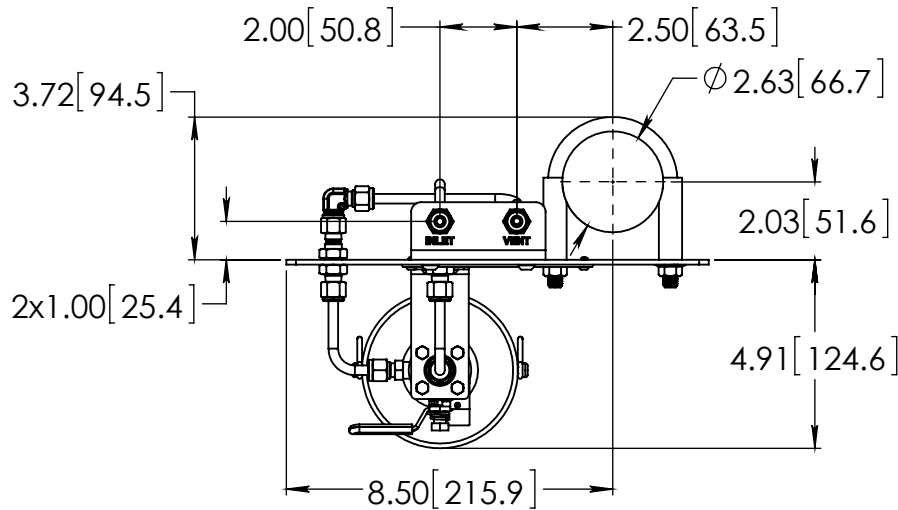
GSL1

Simple Liquid Sampler without Purge

Panel Operation

1. Insert and secure bottle in fixture.
2. Hold valve open on fixture to take sample.
3. After dispensing sample, release valve on fixture.
4. Remove bottle from fixture.





BILL OF MATERIAL

ITEM	PART NUMBER	DESCRIPTION	QTY.
1	SS-MVS-32OZ-32-S4-S4-VI	MVS SAMPLE VALVE, 32OZ BOSTON ROUND (SENTRY)	1
2	SS-400-2R-4	400 SERIES ADAPTER ELBOW	1
3	SS-400-61	400 SERIES BULKHEAD UNION	4
4	304-GSL-PANEL-1	MOUNTING PANEL, 304 SS	1
5	304-GSL-BRKT-1	BULKHEAD BRACKET, 304 SS	1
6	98164A133	#8-32 x 1/4" BHCS, 18-8 SS	2
7	98164A106	#6-32 x 1/4" BHCS, 18-8 SS	4
8	97763A262	1/4-20 x 3/8" BHCS, 18-8 SS	2
9	3042T57	2" PIPE CLAMP, 304 SS	2
10	SS-T4-S-035-20	1/4" X.035 SS TUBING	37.62 in.

CONCEPT DRAWING

Swagelok

- DRAWING NOT TO SCALE.
- DIMENSIONS ARE INCHES NEXT TO [MILLIMETERS].
- DRAWING IS SUBJECT TO CHANGE WITHOUT NOTICE.

THIS ASSEMBLY DESIGN, FUNCTION, AND APPLICATION ARE THE EXPRESS SOLE RESPONSIBILITY OF THE PURCHASER. PURCHASER IS SOLELY RESPONSIBLE FOR THE FIT AND FUNCTION OF ANY **PURCHASER SPECIFIED** COMPONENTS.

DRAWN BY
KEV Mar-03-17

APPROVED BY

TITLE
LIQUID GRAB SAMPLE PANEL

PART NO.

GSL-1

REV -