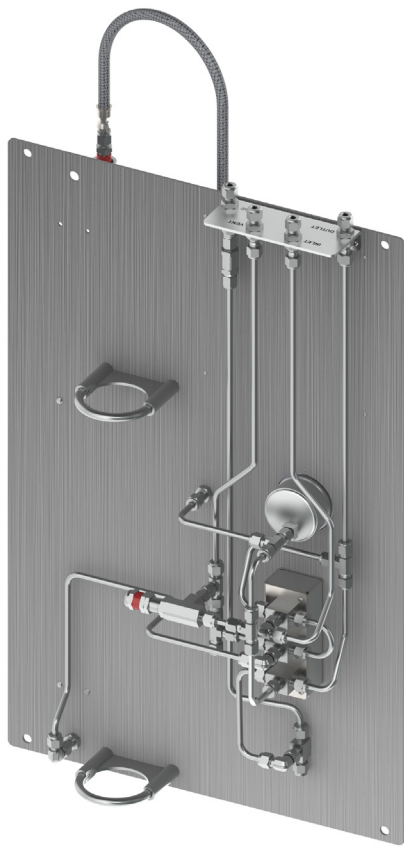


GSM-L-2(-P)

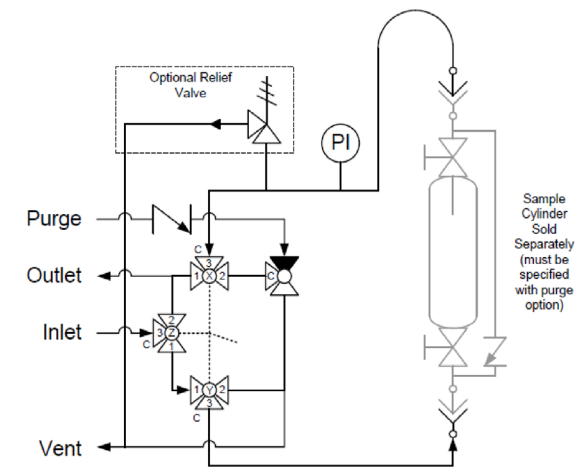
Continuous Flow Liquid Sampler
with Purge

Panel Recommendations

- Used in general liquid sampling applications when continuous flow is required from inlet to outlet.
- Purge option (using a gas or solvent) clears the sample fluid from the sample transport lines before and/or after sample collection.
- Recommended for liquids that are toxic and may settle in the sampler.
- Suggested for samplers installed directly in the sample stream, on a fast loop, or where long sample transport lines are used.



Flow Schematic



Valve Schematic

	Sample Valve Handle Direction	Valve Orientation		
		Valve X	Valve Y	Valve Z
Sample	←			
Off	↑			
Vent	→			

GSM-L-2(-P)

Continuous Flow Liquid Sampler
with Purge

Panel Operation

1. Turn Sample Valve to VENT position and Purge Valve to OFF position.
2. Connect sample cylinder to quick connect on panel.
3. Hold cylinder and close clamp to secure.
4. Connect hose to cylinder.
5. Open cylinder valves and turn Sample Valve to SAMPLE position.
6. Allow fluid to flow until cylinder is full.
7. Turn Sample Valve to OFF position and close cylinder valves.
8. Turn Sample Valve to VENT position and Purge Valve to ON position.
9. Purge System, then turn Purge Valve to OFF position.
10. Disconnect hose from cylinder.
11. Hold cylinder, open clamp, disconnect quick connect on panel and remove cylinder.



