

GSM-L-1(-P)

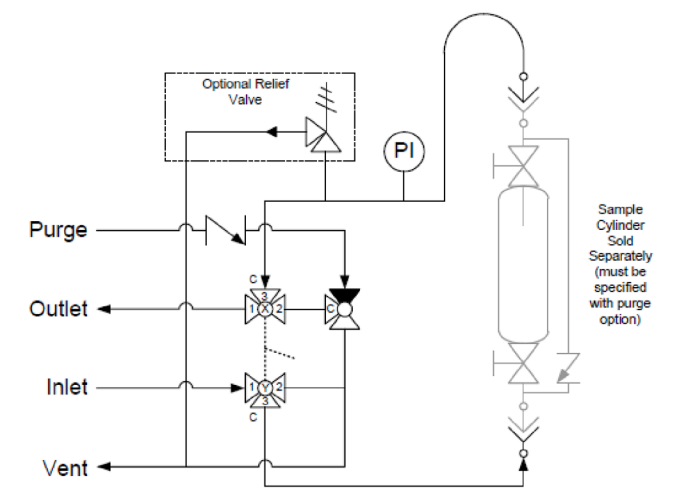
Standard Liquid Sampler with Purge

Panel Recommendations

- Used in general liquid sampling applications. Purge option (using gas or solvent) clears fluid before and/or after sample collection.
- Recommended for fluids that are toxic or may settle in the sampler.
- Suggested for systems when the return is sent to flare.



Flow Schematic



Valve Schematic

	Sample Valve Handle Direction	Valve Orientation	
		Valve X	Valve Y
Sample	←		
Off	↑		
Vent	→		

GSM-L-1(-P)

Standard Liquid Sampler with Purge

Panel Operation

- Turn Sample Valve to VENT position and Purge Valve to OFF position.
- Connect sample cylinder to quick connect on panel.
- Hold cylinder and close clamp to secure.
- Connect hose to cylinder.
- Open cylinder valves and turn Sample Valve to SAMPLE position.
- Allow fluid to flow until cylinder is full.
- Turn Sample Valve to OFF position and close cylinder valves.
- Turn Sample Valve to VENT position and Purge Valve to ON position.
- Purge System, then turn Purge Valve to OFF position.
- Disconnect hose from cylinder.
- Hold cylinder, open clamp, disconnect quick connect on panel and remove cylinder.



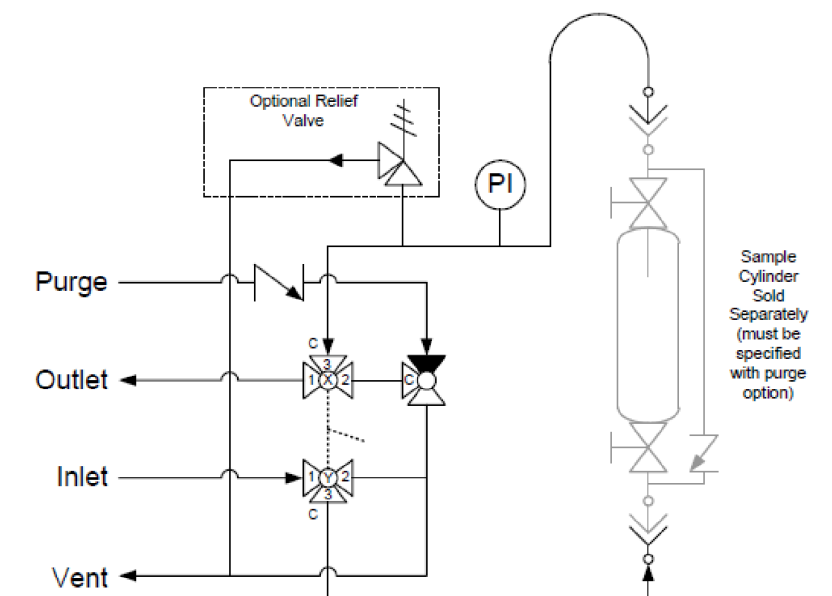
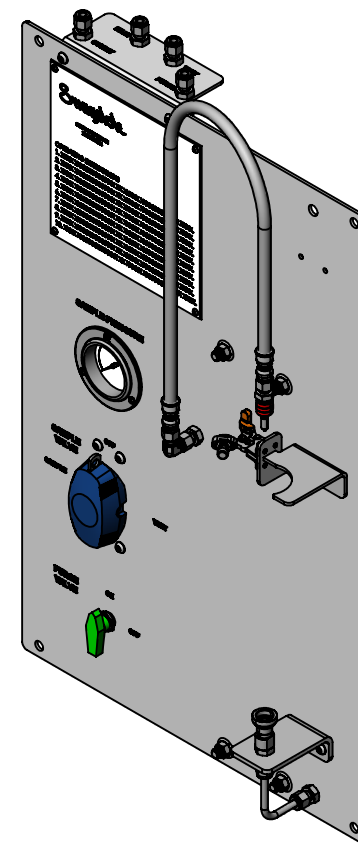
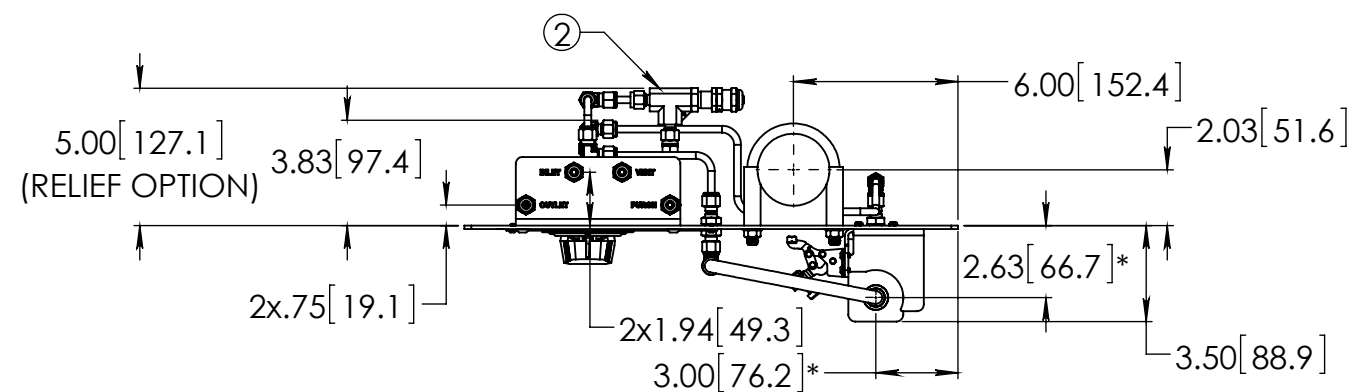
CASE
NO.

THIS ASSEMBLY DESIGN, FUNCTION, AND APPLICATION
ARE THE EXPRESS SOLE RESPONSIBILITY OF THE PURCHASER.

PART NO. GSM-L-1-XXX-XXXXP-S4

REV -

* CENTER CENTERLINE



BILL OF MATERIAL

BILL OF MATERIAL			
ITEM	PART NUMBER	DESCRIPTION	QTY.
1	SS-GSM-VALVE-2	43G SERIES 2-VALVE GEARED ASSEMBLY	1
2	SS-4R3A-SETA	R SERIES RELIEF VALVE	1
3	SS-42GXL54-GR	42G SERIES 3-WAY BALL VALVE	1
4	SS-CHS4-1	CH SERIES CHECK VALVE	1
5	PGI-63S-BG10-BAQX-G	S MODEL GAUGE, 0-10 BARG	1
6	SS-QC4-D-400	QC4 SERIES QUICK CONNECT STEM	1
7	SS-QC4-B1-400	QC4 SERIES QUICK CONNECT BODY	1
8	SS-FL4TA4TA4-30	FL4 SERIES HOSE, 30" LONG	1
9	SS-400-3	400 SERIES UNION TEE	4
10	SS-401-PC	400 SERIES PORT CONNECTOR	3
11	SS-400-2R-4	400 SERIES REDUCER ELBOW	4
12	SS-400-61	400 SERIES BULKHEAD UNION	6
13	304-GSM-PANEL-P	MOUNTING PANEL, 304 SS	1
14	304-GSM-BRKT-8	BULKHEAD BRACKET, 304 SS	1
15	304-GSM-BRKT-5	2" CYLINDER BRACKET, 304 SS	1
16	304-GSM-BRKT-2	QC4 QUICK CONNECT BRACKET, 304 SS	1
17	305-USS	TOGGLE CLAMP, 300 SERIES SS	1
18	3042T57	2" PIPE CLAMP, 304 SS	2
19	98164A106	BHCS. 6-32 X .25 in.	7
20	98164A133	#8-32 x 1/4" BHCS, 18-8 SS	4
21	97763A262	1/4-20 x 3/8" BHCS, 18-8 SS	10
22	SS-T4-S-035-20-S	1/4" x .035" 316/316L TUBING	155.66 in.

CONCEPT DRAWING



- DRAWING NOT TO SCALE.
- DIMENSIONS ARE INCHES NEXT TO [MILLIMETERS].
- DRAWING IS SUBJECT TO CHANGE WITHOUT NOTICE.

THIS ASSEMBLY DESIGN, FUNCTION, AND APPLICATION ARE THE EXPRESS
SOLE RESPONSIBILITY OF THE PURCHASER. PURCHASER IS SOLELY
RESPONSIBLE FOR THE FIT AND FUNCTION OF ANY **PURCHASER SPECIFIED**
COMPONENTS.

DRAWN BY
MAK Mar-6-17

APPROVED BY

TITLE

SMAPLE GRAB MOUDLE

PART NO. GSM-L-1-XXX-XXXXP-S4

REV -