

Liquid Cylinder Sampler

GSM-L-1(-N)

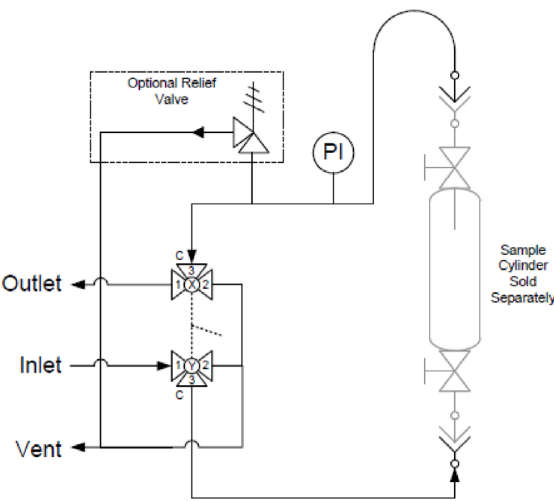
Standard Liquid Sampler without Purge

Panel Recommendations

- Used in general liquid sampling applications.
- Recommended for fluids that are non-toxic and are not susceptible to settling in the sampler.
- Suggested for systems when the return is sent to flare.



Flow Schematic



Valve Schematic

Sample Valve Handle Direction	Valve Orientation	
	Valve X	Valve Y
Sample ←		
Off ↑		
Vent →		

Liquid Cylinder Sampler

GSM-L-1(-N)

Standard Liquid Sampler without Purge

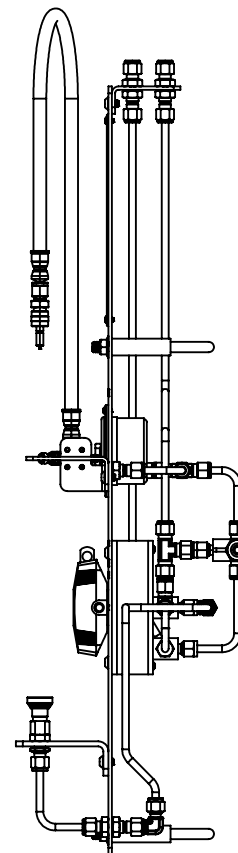
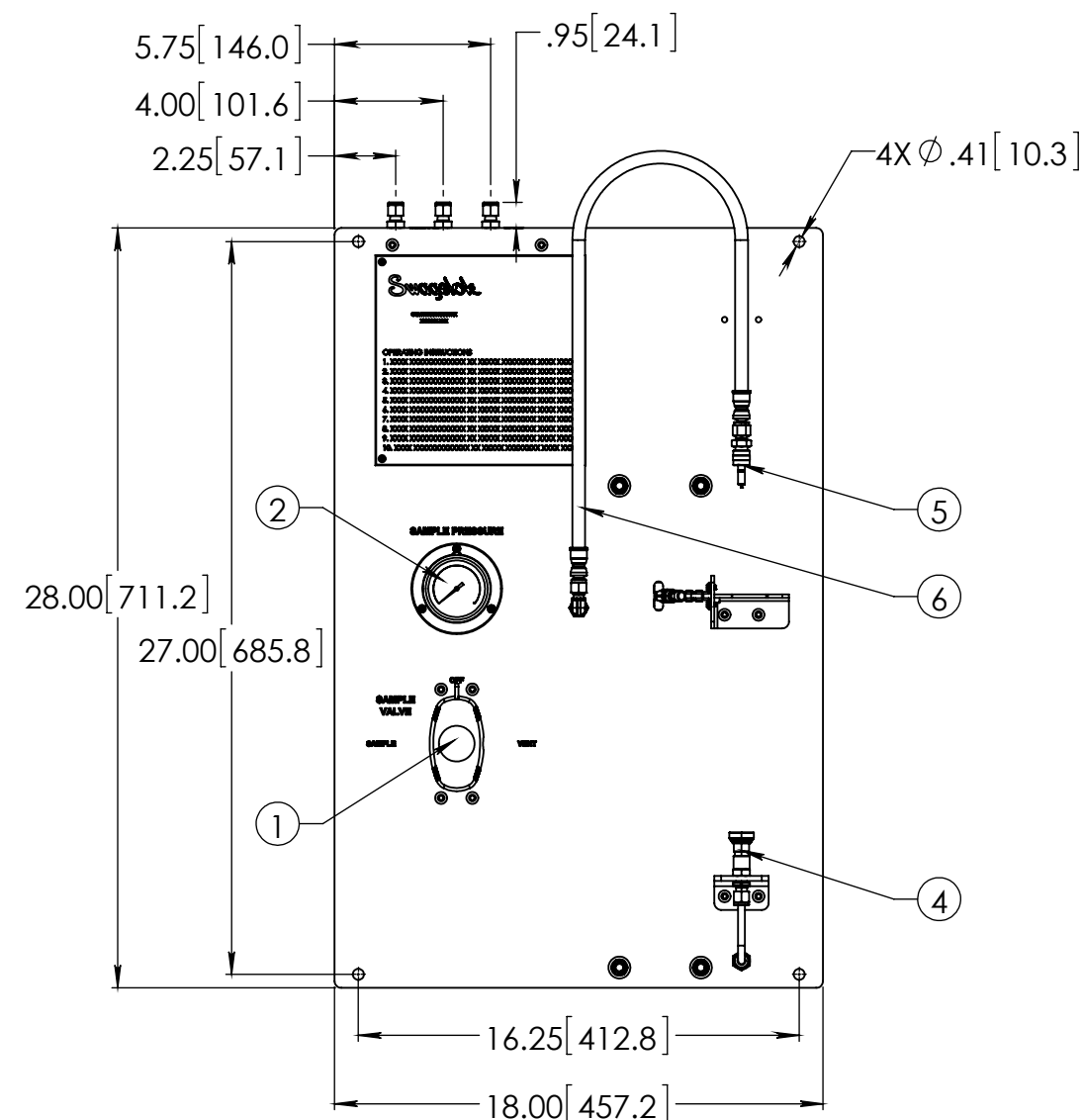
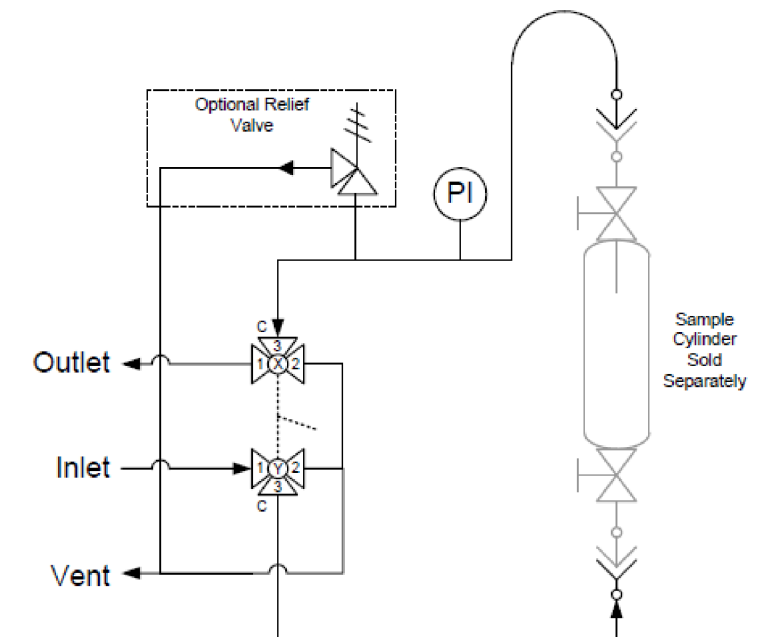
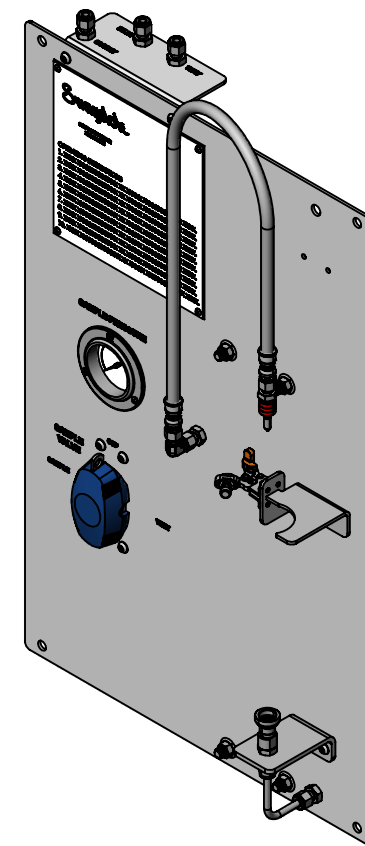
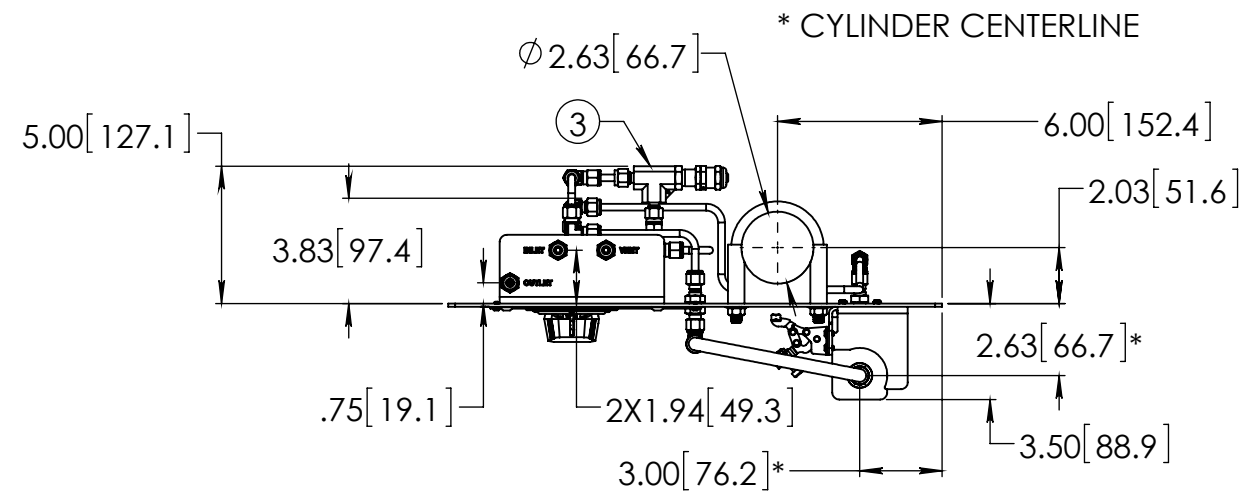
Panel Operation

1. Turn Sample Valve to VENT position.
2. Connect cylinder to quick connect on panel.
3. Hold cylinder and close clamp to secure.
4. Connect hose to cylinder.
5. Open cylinder valves and turn Sample Valve to SAMPLE position.
6. Allow fluid to flow until cylinder is full.
7. Turn Sample Valve to OFF position and close cylinder valves.
8. Turn Sample Valve to VENT position.
9. Disconnect hose from cylinder.
10. Hold cylinder, open clamp, disconnect quick connect on panel and remove cylinder.



Swagelok London





BILL OF MATERIAL

BILL OF MATERIAL			
ITEM	PART NUMBER	DESCRIPTION	QTY.
1	SS-GSM-VALVE-2	43G SERIES 2-VALVE GEARED ASSEMBLY	1
2	PGI-63S-BG10-BAQX-G	S MODEL GAUGE, 0-10 BARG	1
3	SS-4R3A-SETA	R SERIES RELIEF VALVE	1
4	SS-QC4-B1-400	QC4 SERIES QUICK CONNECT BODY	1
5	SS-QC4-D-400	QC4 SERIES QUICK CONNECT STEM	1
6	SS-FL4TA4TA4-30	FL4 SERIES HOSE, 30" LONG	1
7	SS-400-61	400 SERIES BULKHEAD UNION	5
8	SS-400-3	400 SERIES UNION TEE	4
9	SS-401-PC	400 SERIES PORT CONNECTOR	2
10	SS-400-2R-4	400 SERIES REDUCER ELBOW	3
11	304-GSM-PANEL	MOUNTING PANEL, 304 SS	1
12	304-GSM-BRKT-1	BULKHEAD BRACKET, 304 SS	1
13	304-GSM-BRKT-2	QC4 QUICK CONNECT BRACKET, 304 SS	1
14	304-GSM-BRKT-5	2" CYLINDER BRACKET, 304 SS	1
15	98164A106	BHCS. 6-32 X .25 in.	7
16	98164A133	#8-32 x 1/4" BHCS, 18-8 SS	4
17	97763A262	1/4-20 x 3/8" BHCS, 18-8 SS	10
18	305-U	COMPACT CLAMPING	1
19	3042T57	2" PIPE CLAMP, 304 SS	2
24	SS-T4-S-035-20	1/4" X .035" SS TUBING	119.48 in.

CONCEPT DRAWING



- DRAWING NOT TO SCALE.
- DIMENSIONS ARE INCHES NEXT TO [MILLIMETERS].
- DRAWING IS SUBJECT TO CHANGE WITHOUT NOTICE.

THIS ASSEMBLY DESIGN, FUNCTION, AND APPLICATION ARE THE EXPRESS
SOLE RESPONSIBILITY OF THE PURCHASER. PURCHASER IS SOLELY
RESPONSIBLE FOR THE FIT AND FUNCTION OF ANY **PURCHASER SPECIFIED**
COMPONENTS.

DRAWN BY
YDY Mar-6-17

APPROVED BY

TITLE

GRAP SAMPLE MODULE

PART NO. GSM-L-1-XXX-XXXXN-S4

REV -