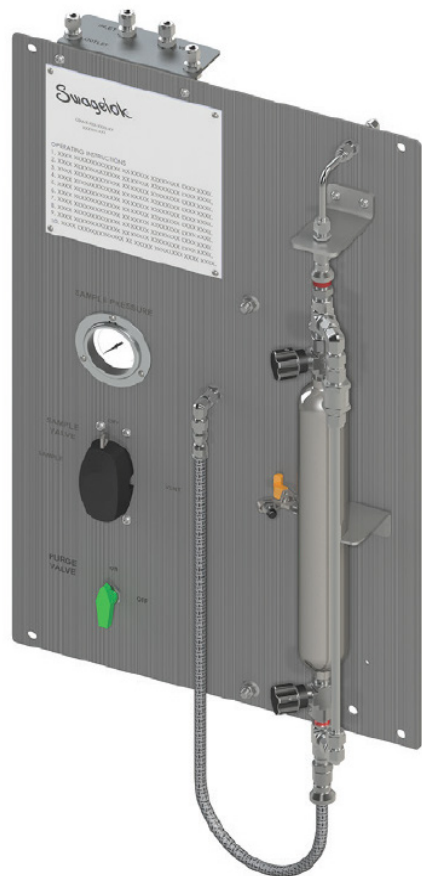


GSM-G-2(-P)

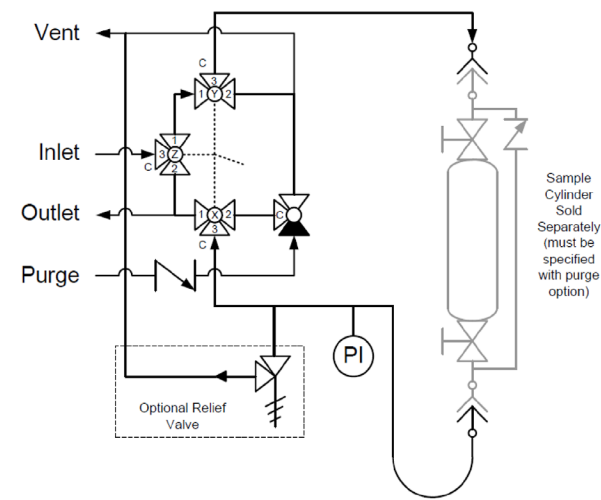
Continuous Flow Gas Sampler with Purge

Panel Recommendations

- Used in general gas sampling applications when continuous flow is required from inlet to outlet.
- Purge option clears sample gas from the sample transport lines before and/or after sample collection.
- Recommended for gases that are toxic or with condensible hydrocarbons.
- Suggested for samplers installed directly in the sample stream, on a fast loop, or where long sample transport lines are used.



Flow Schematic



Valve Schematic

Sample Valve Handle Direction	Valve Orientation		
	Valve X	Valve Y	Valve Z
Sample ←			
Off ↑			
Vent →			

GSM-G-2(-P)

Continuous Flow Gas Sampler
with Purge

Panel Operation

1. Turn Sample Valve to VENT position and Purge Valve to OFF position.
2. Connect sample cylinder to quick connect on panel.
3. Hold cylinder and close clamp to secure.
4. Connect hose to cylinder.
5. Open cylinder valves and turn Sample Valve to SAMPLE position.
6. Allow fluid to flow until cylinder is full.
7. Turn Sample Valve to OFF position and close cylinder valves.
8. Turn Sample Valve to VENT position and Purge Valve to ON position.
9. Purge System, then turn Purge Valve to OFF position.
10. Disconnect hose from cylinder.
11. Hold cylinder, open clamp, disconnect quick connect on panel and remove cylinder.

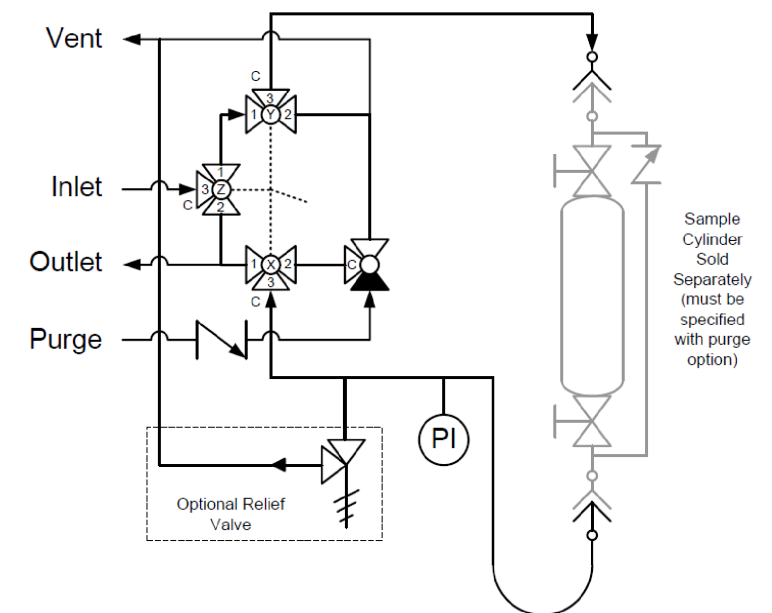
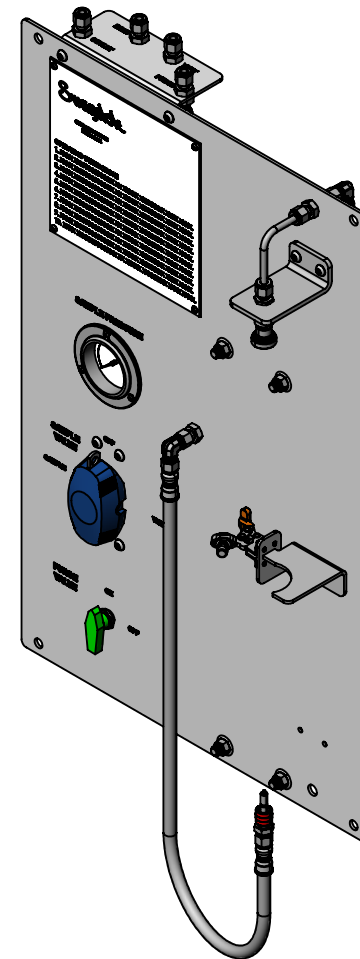
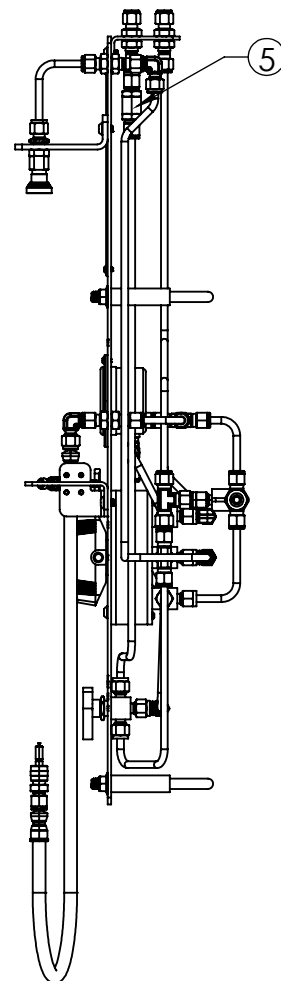
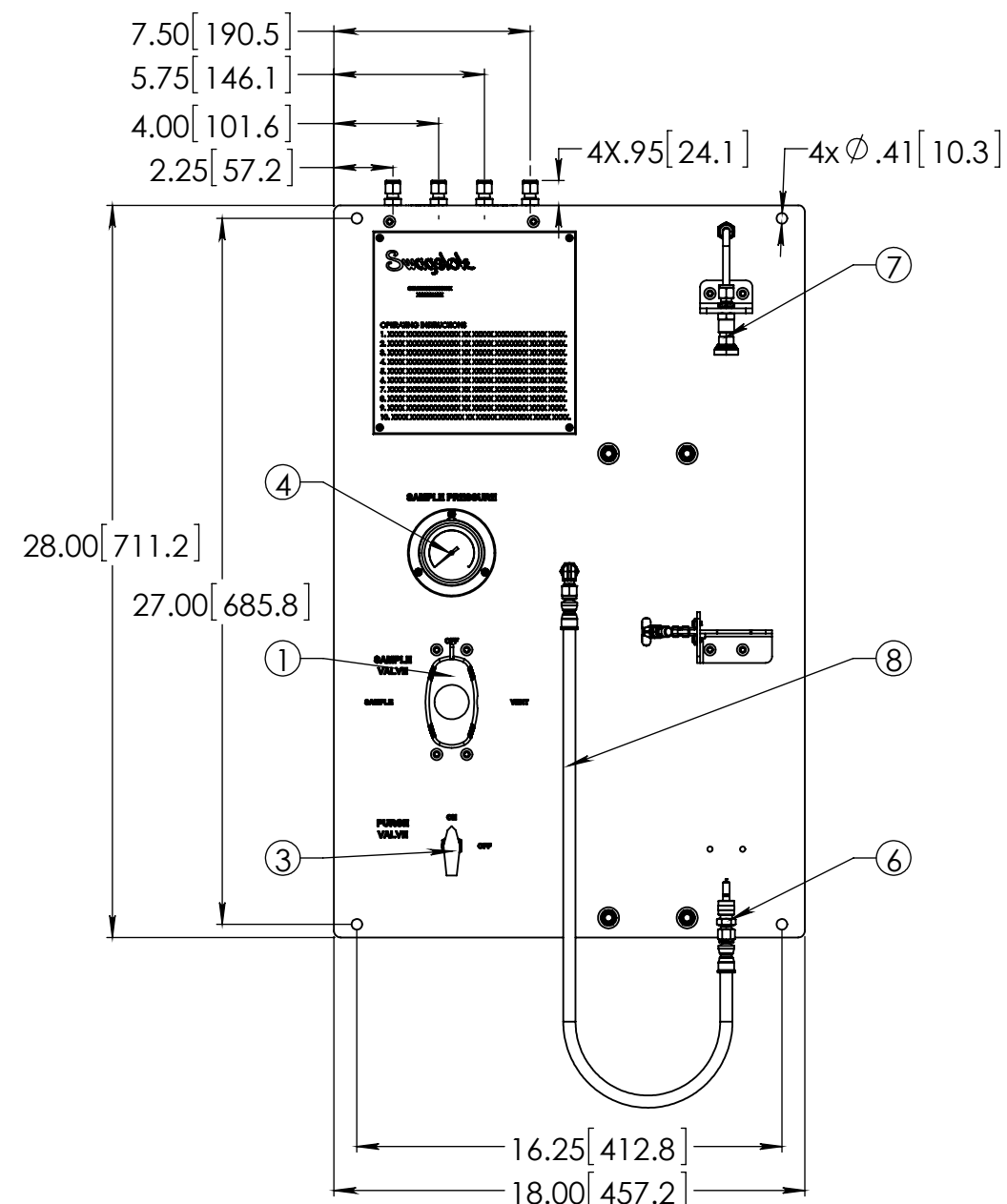
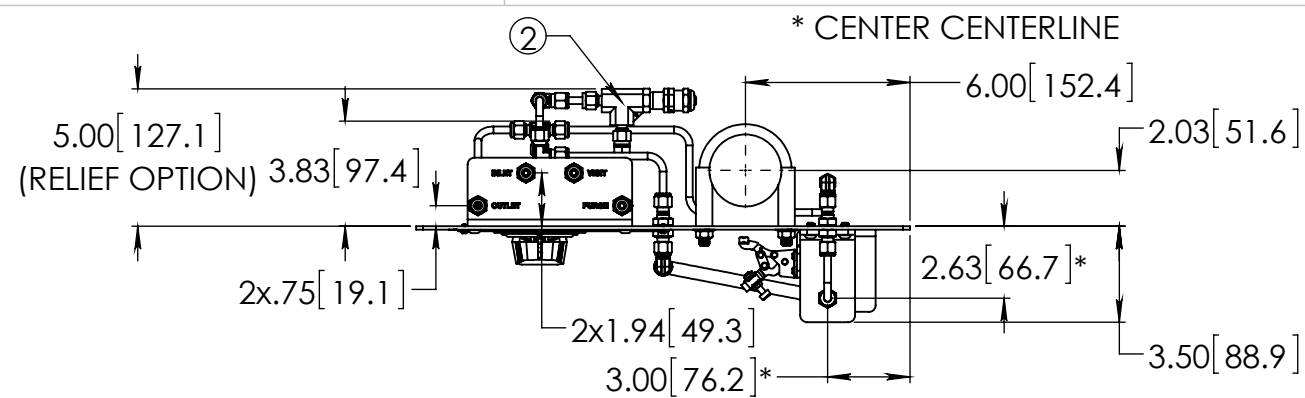


CASE
NO.

THIS ASSEMBLY DESIGN, FUNCTION, AND APPLICATION
ARE THE EXPRESS SOLE RESPONSIBILITY OF THE PURCHASER.

PART NO. GSM-G-2-XXX-XXXXP-S4

REV -



BILL OF MATERIAL

BILL OF MATERIAL			
ITEM	PART NUMBER	DESCRIPTION	QTY.
1	SS-GSM-VALVE-3	43G SERIES 3-VALVE GEARED ASSEMBLY	1
2	SS-4R3A-SETA	R SERIES RELIEF VALVE	1
3	SS-42GXL54-GR	42G SERIES 3-WAY BALL VALVE	1
4	PGI-63S-BG10-BAQX-G	S MODEL GAUGE, 0-10 BARG	1
5	SS-CHS4-1	CH SERIES CHECK VALVE	1
6	SS-QC4-D-400	QC4 SERIES QUICK CONNECT STEM	1
7	SS-QC4-B1-400	QC4 SERIES QUICK CONNECT BODY	1
8	SS-FL4TA4TA4-30	FL4 SERIES HOSE, 30" LONG	1
9	SS-400-2R-4	400 SERIES REDUCER ELBOW	5
10	SS-400-61	400 SERIES BULKHEAD UNION	6
11	SS-400-3	400 SERIES UNION TEE	5
12	SS-401-PC	400 SERIES PORT CONNECTOR	3
13	304-GSM-PANEL-P	MOUNTING PANEL, 304 SS	1
14	304-GSM-BRKT-8	BULKHEAD BRACKET, 304 SS	1
15	304-GSM-BRKT-5	2" CYLINDER BRACKET, 304 SS	1
16	304-GSM-BRKT-2	QC4 QUICK CONNECT BRACKET, 304 SS	1
17	305-U	COMPACT CLAMPING	1
18	97763A262	1/4-20 x 3/8" BHCS, 18-8 SS	10
19	3042T57	2" PIPE CLAMP, 304 SS	2
20	98164A133	#8-32 x 1/4" BHCS, 18-8 SS	4
21	98164A106	BHCS #6-32 Thread	7
28	SS-T4-S-035-20	1/4" X .035" SS TUBING	194.26 in.

CONCEPT DRAWING



- DRAWING NOT TO SCALE.
- DIMENSIONS ARE INCHES NEXT TO [MILLIMETERS].
- DRAWING IS SUBJECT TO CHANGE WITHOUT NOTICE.

THIS ASSEMBLY DESIGN, FUNCTION, AND APPLICATION ARE THE EXPRESS SOLE RESPONSIBILITY OF THE PURCHASER. PURCHASER IS SOLELY RESPONSIBLE FOR THE FIT AND FUNCTION OF ANY **PURCHASER SPECIFIED** COMPONENTS.

DRAWN BY
YDY Mar-6-17

APPROVED BY

TITLE
SMAPLE GRAB MOUDLE

PART NO. **GSM-G-2-XXX-XXXXP-S4**

REV -