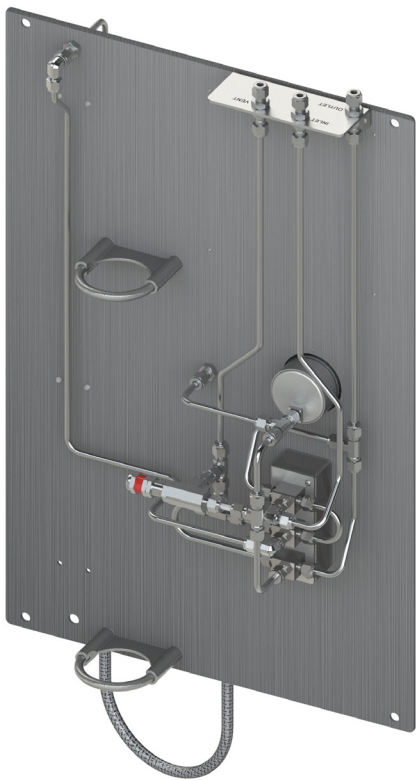


# GSM-G-2(-N)

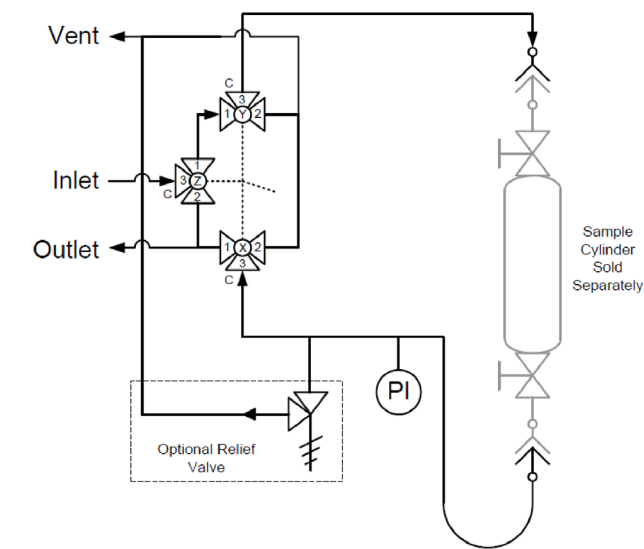
Continuous Flow Gas Sampler  
without Purge

## Panel Recommendations

- Used in general gas sampling applications when continuous flow is required from inlet to outlet.
- Recommended for gases that are non-toxic.
- Suggested for samplers installed directly in the sample stream, on a fast loop, or where long sample transport lines are used.



Flow Schematic



Valve Schematic

Sample Valve Handle Direction	Valve Orientation		
	Valve X	Valve Y	Valve Z
Sample ←			
Off ↑			
Vent →			

# GSM-G-2(-N)

Continuous Flow Gas Sampler  
without Purge

## Panel Operation

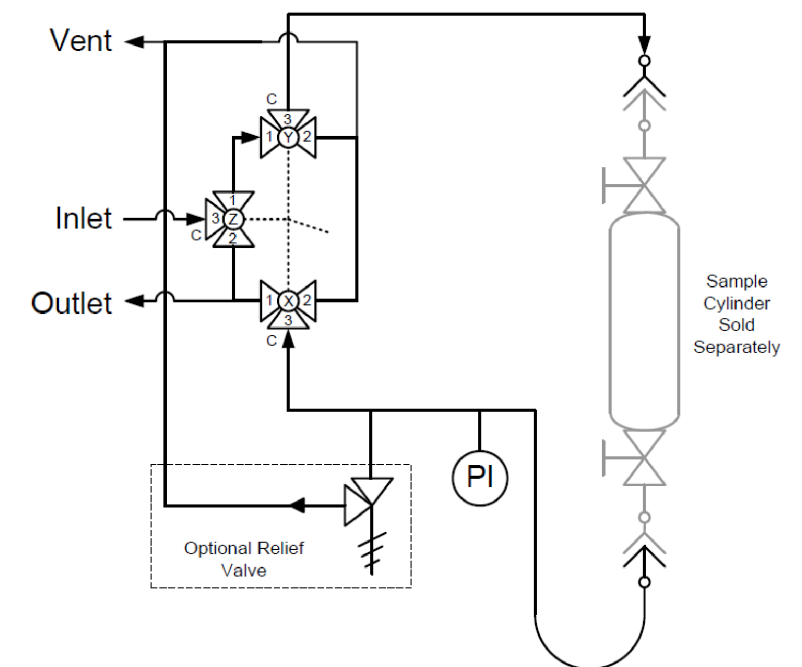
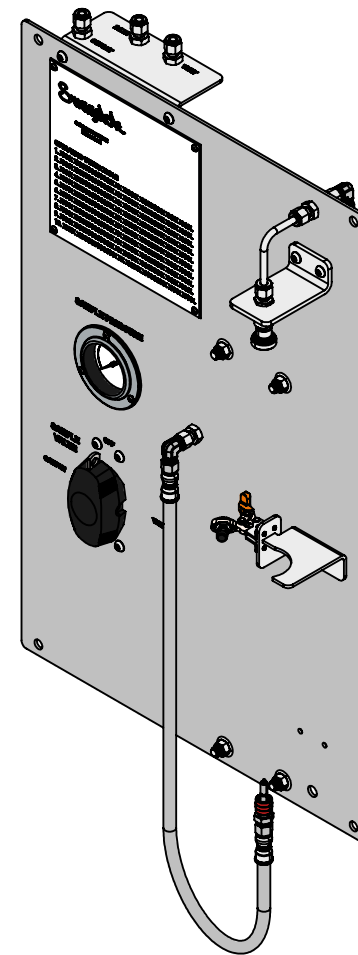
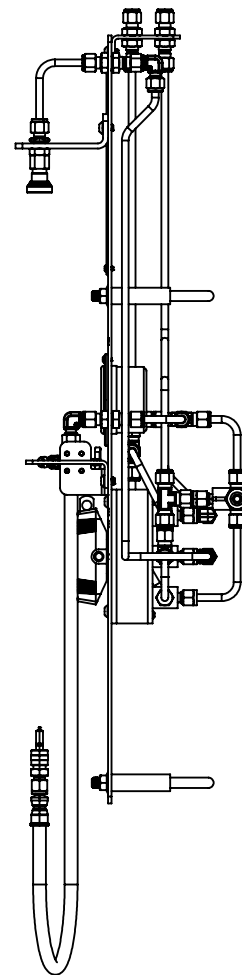
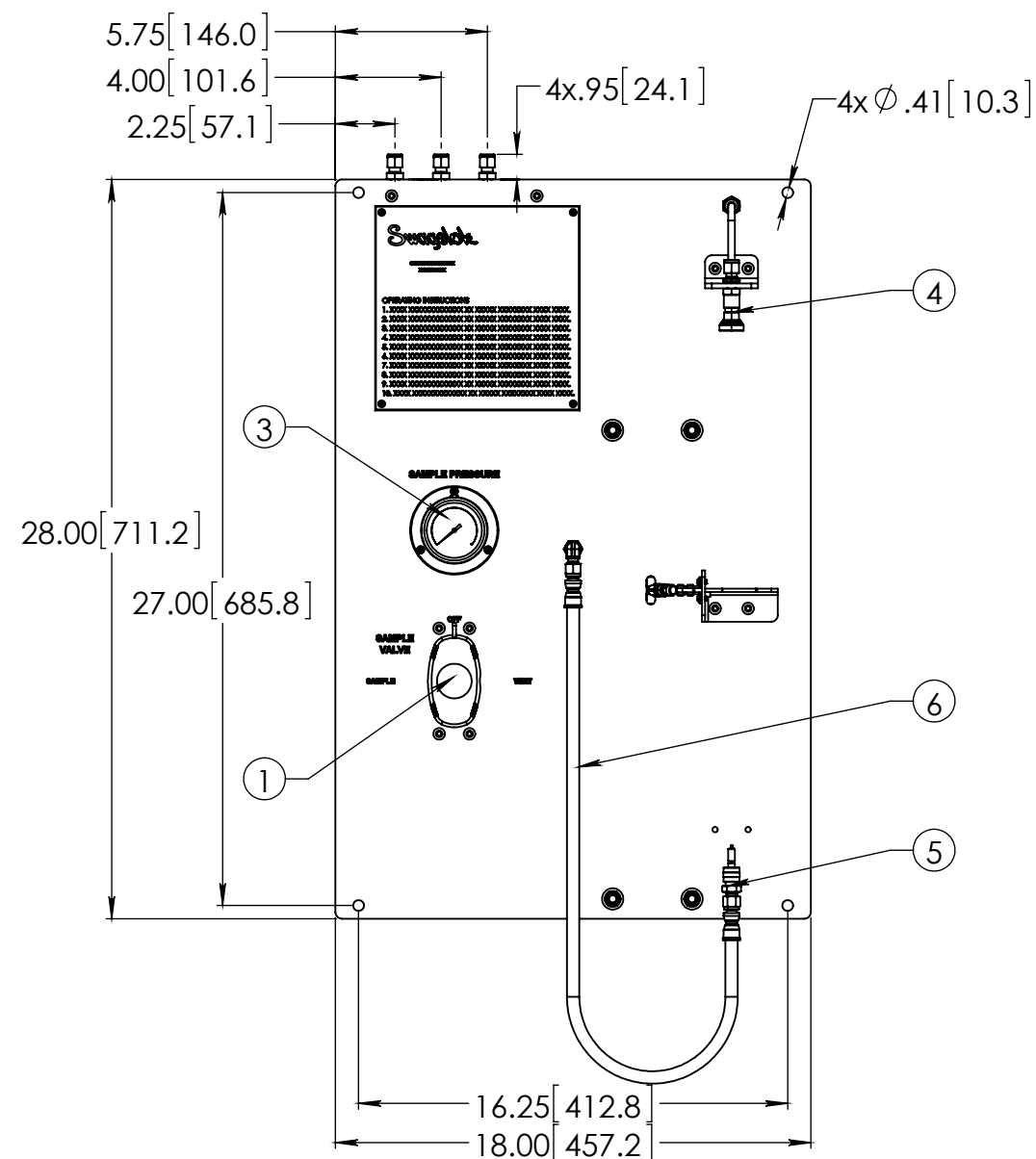
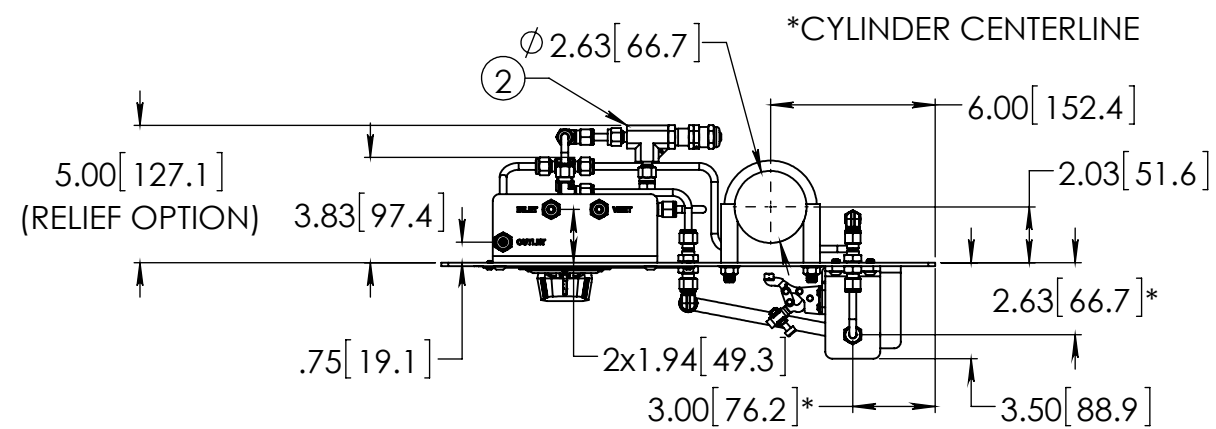
1. Turn Sample Valve to VENT position.
2. Connect cylinder to quick connect on panel.
3. Hold cylinder and close clamp to secure.
4. Connect hose to cylinder.
5. Open cylinder valves and turn Sample Valve to SAMPLE position.
6. Allow fluid to flow until cylinder is full.
7. Turn Sample Valve to OFF position and close cylinder valves.
8. Turn Sample Valve to VENT position.
9. Disconnect hose from cylinder.
10. Hold cylinder, open clamp, disconnect quick connect on panel and remove cylinder.

CASE  
NO.

THIS ASSEMBLY DESIGN, FUNCTION, AND APPLICATION  
ARE THE EXPRESS SOLE RESPONSIBILITY OF THE PURCHASER.

PART NO. GSM-G-2-XXX-XXXXN-S4

REV -



## BILL OF MATERIAL

<i><b>BILL OF MATERIAL</b></i>			
<u>ITEM</u>	<u>PART NUMBER</u>	<u>DESCRIPTION</u>	<u>QTY.</u>
1	SS-GSM-VALVE-3	43G SERIES 3-VALVE GEARED ASSEMBLY	1
2	SS-4R3A-SETA	R SERIES RELIEF VALVE	1
3	PGI-63S-BG10-BAQX-G	S MODEL GAUGE, 0-10 BARG	1
4	SS-QC4-B1-400	QC4 SERIES QUICK CONNECT BODY	1
5	SS-QC4-D-400	QC4 SERIES QUICK CONNECT STEM	1
6	SS-FL4TA4TA4-30	FL4 SERIES HOSE, 30" LONG	1
7	SS-400-61	400 SERIES BULKHEAD UNION	5
8	SS-400-3	400 SERIES UNION TEE	5
9	SS-400-2R-4	400 SERIES REDUCER ELBOW	4
10	SS-401-PC	400 SERIES PORT CONNECTOR	2
11	304-GSM-PANEL	MOUNTING PANEL, 304 SS	1
12	304-GSM-BRKT-1	BULKHEAD BRACKET, 304 SS	1
13	304-GSM-BRKT-2	QC4 QUICK CONNECT BRACKET, 304 SS	1
14	304-GSM-BRKT-5	2" CYLINDER BRACKET, 304 SS	1
15	98164A133	#8-32 x 1/4" BHCS, 18-8 SS	4
16	98164A106	BHCS, 6-32 x .25	7
17	97763A262	1/4-20 x 3/8" BHCS, 18-8 SS	10
18	305-U	COMPACT CLAMPING	1
19	3042T57	2" PIPE CLAMP, 304 SS	2
20	SS-T4-S-035-20	1/4" X .035" SS TUBING	142.64 in.

### CONCEPT DRAWING



- DRAWING NOT TO SCALE.
- DIMENSIONS ARE INCHES NEXT TO [MILLIMETERS].
- DRAWING IS SUBJECT TO CHANGE WITHOUT NOTICE.

THIS ASSEMBLY DESIGN, FUNCTION, AND APPLICATION ARE THE EXPRESS  
SOLE RESPONSIBILITY OF THE PURCHASER. PURCHASER IS SOLELY  
RESPONSIBLE FOR THE FIT AND FUNCTION OF ANY **PURCHASER SPECIFIED**  
COMPONENTS.

DRAWN BY  
YDY Mar-6-17

APPROVED BY

TITLE

GRAP SAMPLE MOUDLE

PART NO. GSM-G-2-XXX-XXXXN-S4

REV -