

GSM-G-1(-P)

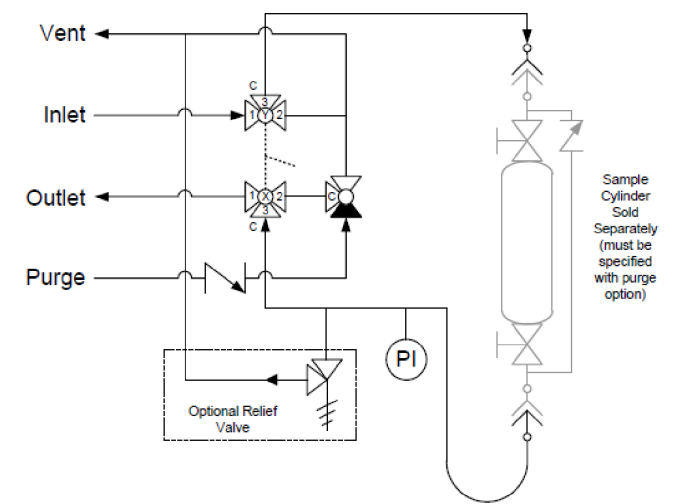
Standard Gas Sampler with Purge

Panel Recommendations

- Used in general gas sampling applications. Purge option clears sample gas before and/or after the sample collection.
- Recommended for gases that are toxic or condensible hydrocarbons.
- Suggested for systems when the return is sent to flare.



Flow Schematic



Valve Schematic

Sample Valve Handle Direction	Valve Orientation	
	Valve X	Valve Y
Sample ←		
Off ↑		
Vent →		

GSM-G-1(-P)

Standard Gas Sampler with Purge

Panel Operation

1. Turn Sample Valve to VENT position and Purge Valve to OFF position.
2. Connect sample cylinder to quick connect on panel.
3. Hold cylinder and close clamp to secure.
4. Connect hose to cylinder.
5. Open cylinder valves and turn Sample Valve to SAMPLE position.
6. Allow fluid to flow until cylinder is full.
7. Turn Sample Valve to OFF position and close cylinder valves.
8. Turn Sample Valve to VENT position and Purge Valve to ON position.
9. Purge System, then turn Purge Valve to OFF position.
10. Disconnect hose from cylinder.
11. Hold cylinder, open clamp, disconnect quick connect on panel and remove cylinder.

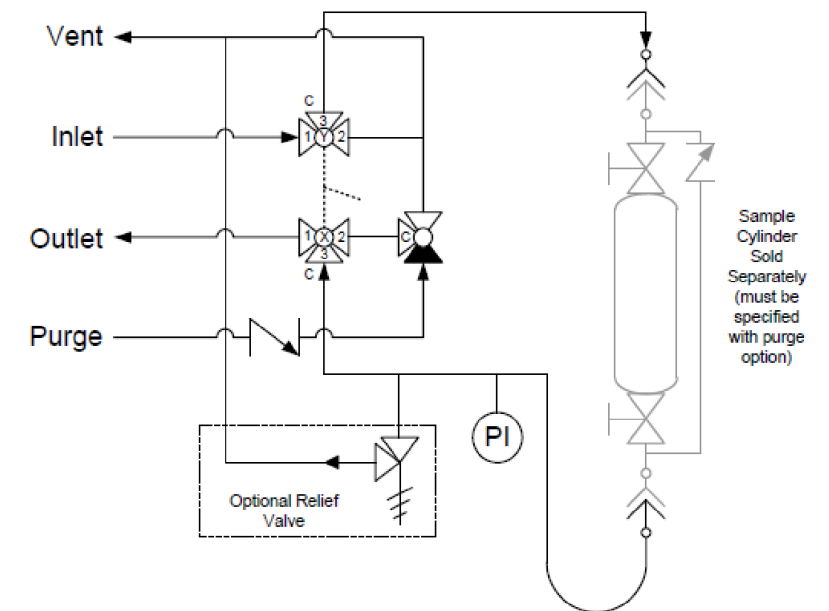
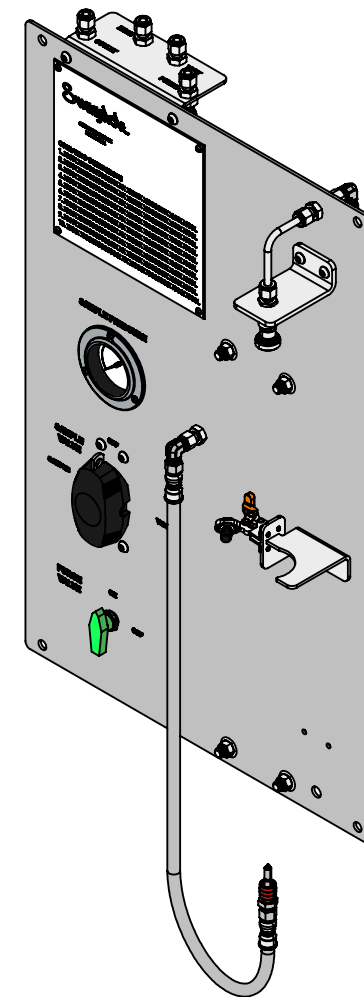
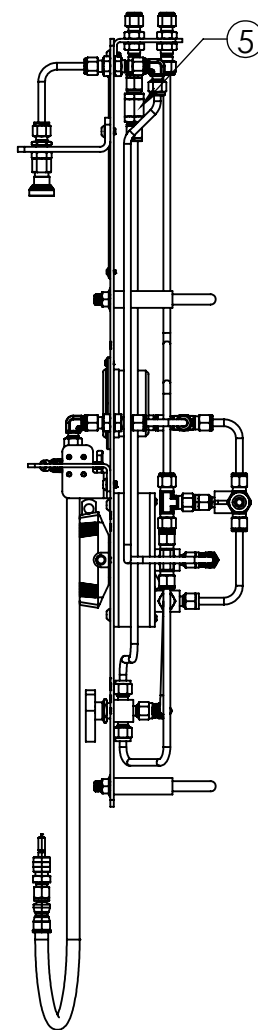
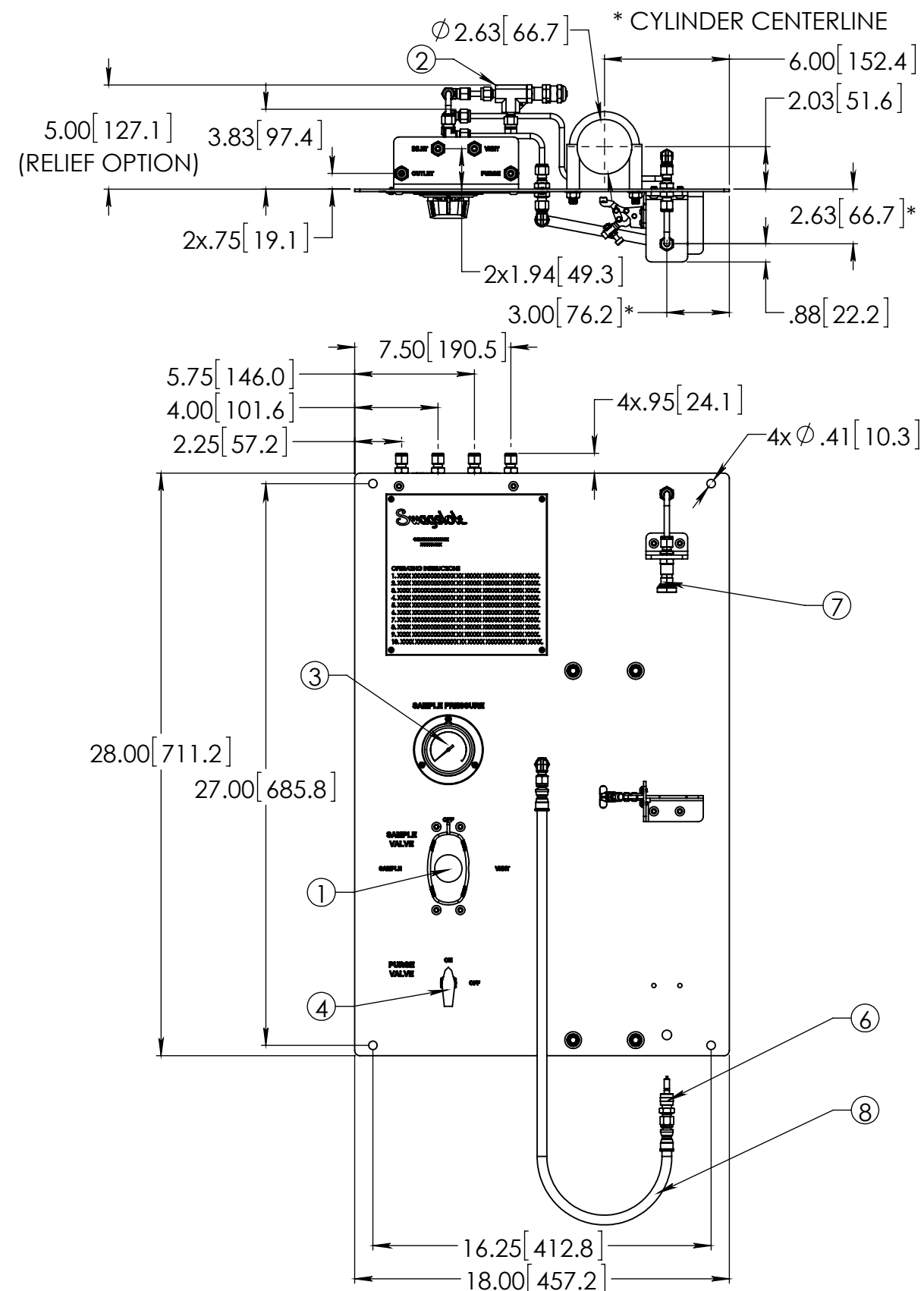


CASE
NO.

THIS ASSEMBLY DESIGN, FUNCTION, AND APPLICATION
ARE THE EXPRESS SOLE RESPONSIBILITY OF THE PURCHASER.

PART NO. GSM-G-1-XXX-XXXXP-S4

REV -



BILL OF MATERIAL

ITEM	PART NUMBER	DESCRIPTION	QTY.
1	SS-GSM-VALVE-2	43G SERIES 2-VALVE GEARED ASSEMBLY	1
2	SS-4R3A-SETA	R SERIES RELIEF VALVE	1
3	PGI-63S-BG10-BAQX-G	S MODEL GAUGE, 0-10 BARG	1
4	SS-42GXL54-GR	42G SERIES 3-WAY BALL VALVE	1
5	SS-CHS4-1	CH SERIES CHECK VALVE	1
6	SS-QC4-D-400	QC4 SERIES QUICK CONNECT STEM	1
7	SS-QC4-B1-400	QC4 SERIES QUICK CONNECT BODY	1
8	SS-FL4TA4TA4-30	FL4 SERIES HOSE, 30" LONG	1
9	SS-400-3	400 SERIES UNION TEE	4
10	SS-400-61	400 SERIES BULKHEAD UNION	6
11	SS-400-2R-4	400 SERIES REDUCER ELBOW	4
12	SS-401-PC	400 SERIES PORT CONNECTOR	3
13	305-U	COMPACT CLAMPS	1
14	304-GSM-BRKT-8	BULKHEAD BRACKET, 304 SS	1
15	304-GSM-PANEL-P	MOUNTING PANEL, 304 SS	1
16	304-GSM-BRKT-5	2" CYLINDER BRACKET, 304 SS	1
17	304-GSM-BRKT-2	QC4 QUICK CONNECT BRACKET, 304 SS	1
18	3042T57	2" PIPE CLAMP, 304 SS	2
19	98164A106	BHCS,6-32X.25	7
20	97763A262	1/4-20 x 3/8" BHCS, 18-8 SS	10
27	SS-T4-S-035-20	1/4"X.035" SS TUBING	165.27 in.

CONCEPT DRAWING



- DRAWING NOT TO SCALE.
- DIMENSIONS ARE INCHES NEXT TO [MILLIMETERS].
- DRAWING IS SUBJECT TO CHANGE WITHOUT NOTICE.

THIS ASSEMBLY DESIGN, FUNCTION, AND APPLICATION ARE THE EXPRESS
SOLE RESPONSIBILITY OF THE PURCHASER. PURCHASER IS SOLELY
RESPONSIBLE FOR THE FIT AND FUNCTION OF ANY **PURCHASER SPECIFIED**
COMPONENTS.

DRAWN BY	ELA Mar-6-17
APPROVED BY	

TITLE

GRAP SAMPLE MODULE

PART
NO. GSM-G-1-XXX-XXXXP-S4

REV -