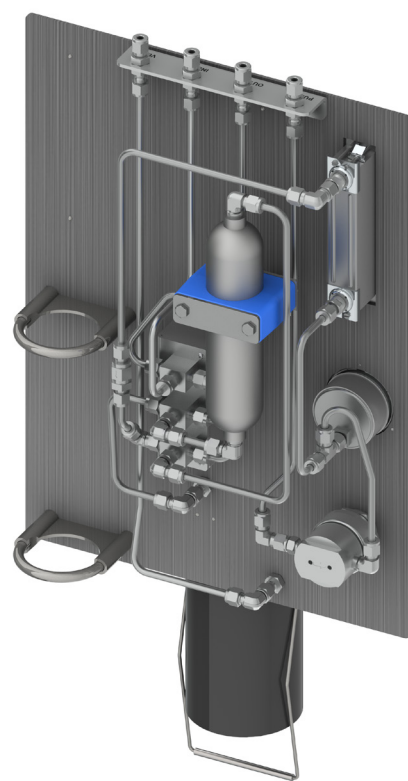


GSL7

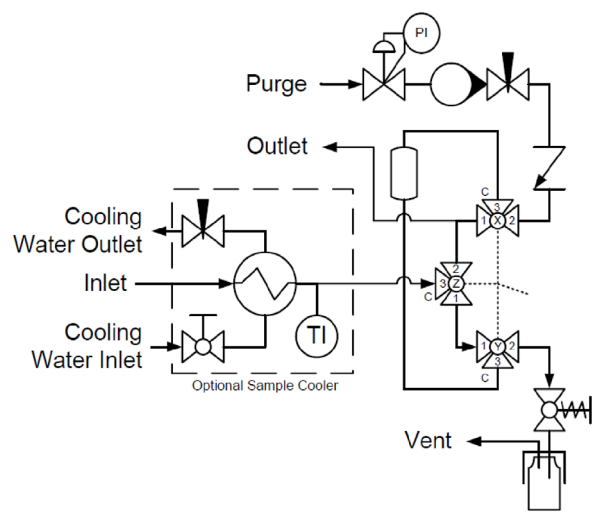
Fixed Volume Liquid Sampler
with Continuous Flow

Panel Recommendations

- Used in fixed volume sampling applications that prevents overfilling the sampler in systems where continuous flow is required from inlet to outlet. A sample is drawn into a fixed volume, held, and then dispensed into the sampler.
- Recommended for ensuring 60-80% fill of the sample container.
Note: This requires a sample bottle that is larger than the fixed volume reservoir.
- Suggested for samplers installed directly in the sample stream, in a fast loop, or where long sample transport lines are used.



Flow Schematic



Flow Schematic

Sample Valve Handle Direction	Valve Orientation		
	Valve X	Valve Y	Valve Z
Flush ←			
Hold ↑			
Sample →			

GSL7

Fixed Volume Liquid Sampler
with Continuous Flow

Panel Operation

1. Insert and secure bottle in fixture.
2. Switch Sample Valve to FLUSH position.
3. Allow sample to fill fixed volume cylinder.
4. Switch Sample Valve to SAMPLE position.
5. Hold valve open on fixture to take sample.
6. Adjust Purge Pressure and Purge Flow as necessary.
7. After dispensing sample, release valve on fixture.
8. Switch Sample Valve to FLUSH position.
9. Remove bottle from fixture.

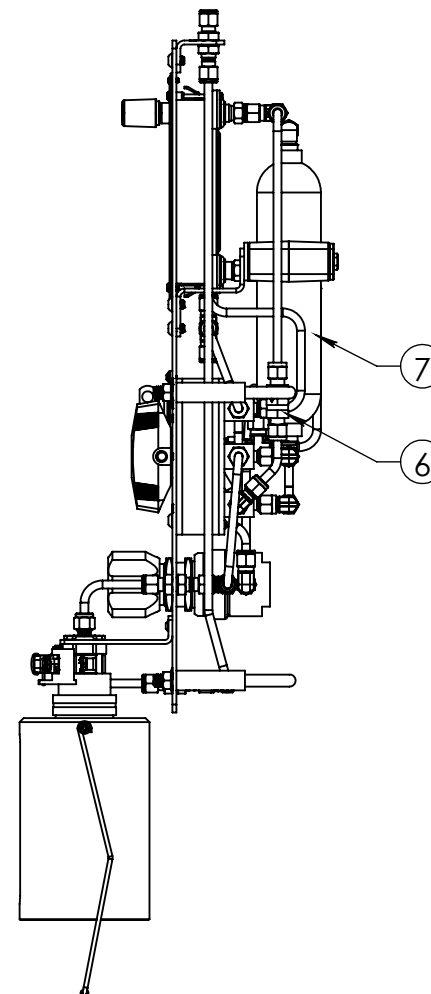
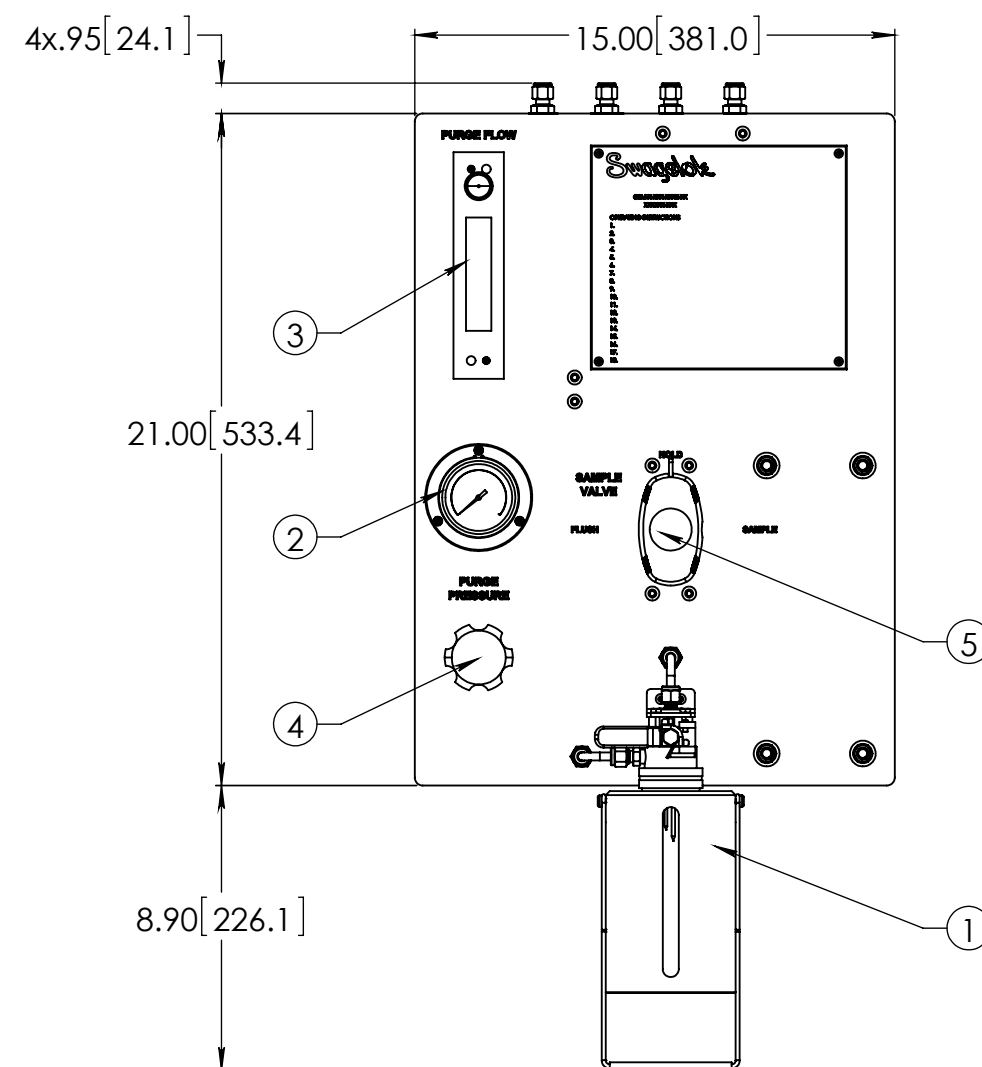
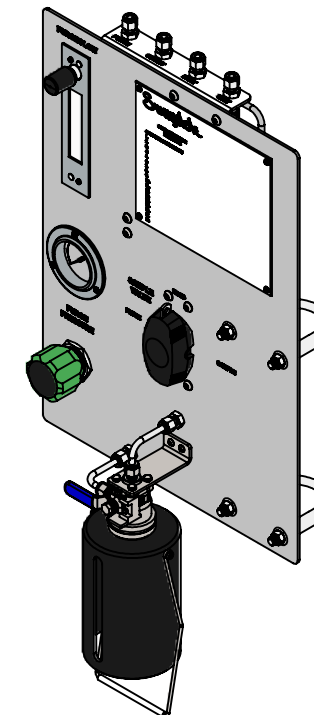
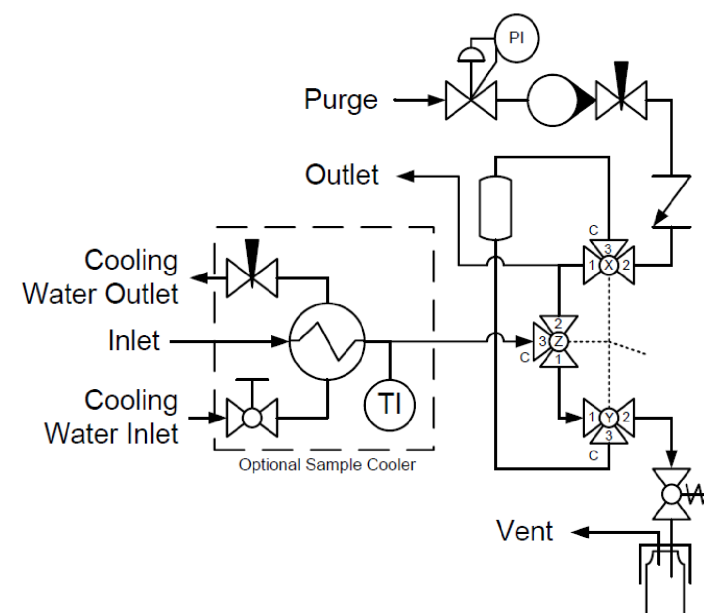
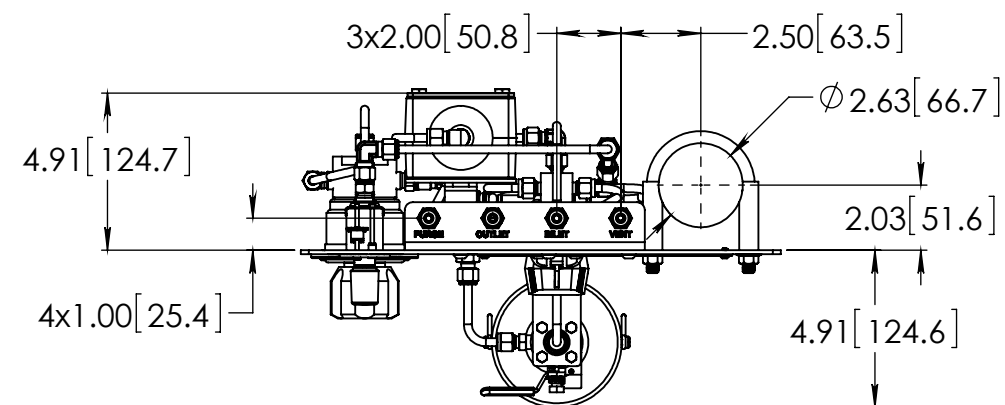


CASE
NO.

THIS ASSEMBLY DESIGN, FUNCTION, AND APPLICATION
ARE THE EXPRESS SOLE RESPONSIBILITY OF THE PURCHASER.

PART NO. **GSL-7**

REV -



BILL OF MATERIAL

ITEM	PART NUMBER	DESCRIPTION	QTY.
1	SS-MVS-32OZ-32-S4-S4-VI	MVS SAMPLE VALVE, 32OZ BOSTON ROUND (SENTRY)	1
2	PGI-63S-BG1-BAQX-G	S MODEL GAUGE, 0-1 BARG	1
3	VAF-G2-05L-1-0-WZ	G2 MODEL FLOWMETER, .1 - 1.0 NL/M AIR	1
4	KPR1CJA12A60000	KPR SERIES REGULATOR, 0-10 PSIG	1
5	SS-GSM-VALVE-3	43G SERIES 3-VALVE ASSEMBLY	1
6	SS-CHS4-1/3	CH SERIES CHECK VALVE	1
7	304L-HDF4-300	300cc SAMPLE CYLINDER	1
8	3042T57	2" PIPE CLAMP, 304 SS	2
9	97763A262	1/4-20 x 3/8" BHCS, 18-8 SS	8
10	98164A106	#6-32 x 1/4" BHCS, 18-8 SS	7
11	98164A133	#8-32 x 1/4" BHCS, 18-8 SS	2
12	SS-400-61	400 SERIES BULKHEAD UNION	6
13	SS-400-2R-4	400 SERIES ADAPTER ELBOW	5
14	SS-400-3	400 SERIES UNION TEE	2
15	SS-400-2-4	400 SERIES MALE ELBOW	3
16	SS-400-1-4	400 SERIES MALE CONNECTOR	1
17	SS-4-TA-1-4	1/4" TA MALE ADAPTER	2
18	SS-400-9	400 SERIES UNION ELBOW	2
19	304-GSL-BRKT-9	2" CYLINDER SUPPORT BRACKET	1
20	304-GSL-BRKT-4	BULKHEAD BRACKET, 304 SS	1
21	304-GSL-PANEL-67	MOUNTING PANEL, 304 SS	1
22	304-S6-PP-32T	2" TUBE SUPPORT CLAMP	1
23	SS-T4-S-035-20	1/4" X .035 SS TUBING	164.87 in.

CONCEPT DRAWING



- DRAWING NOT TO SCALE.
- DIMENSIONS ARE INCHES NEXT TO [MILLIMETERS].
- DRAWING IS SUBJECT TO CHANGE WITHOUT NOTICE.

THIS ASSEMBLY DESIGN, FUNCTION, AND APPLICATION ARE THE EXPRESS
SOLE RESPONSIBILITY OF THE PURCHASER. PURCHASER IS SOLELY
RESPONSIBLE FOR THE FIT AND FUNCTION OF ANY **PURCHASER SPECIFIED**
COMPONENTS.

DRAWN BY
KEV Mar-3-17

APPROVED BY

TITLE

LIQUID GRAB SAMPLE PANEL

PART NO. **GSL-7** REV -