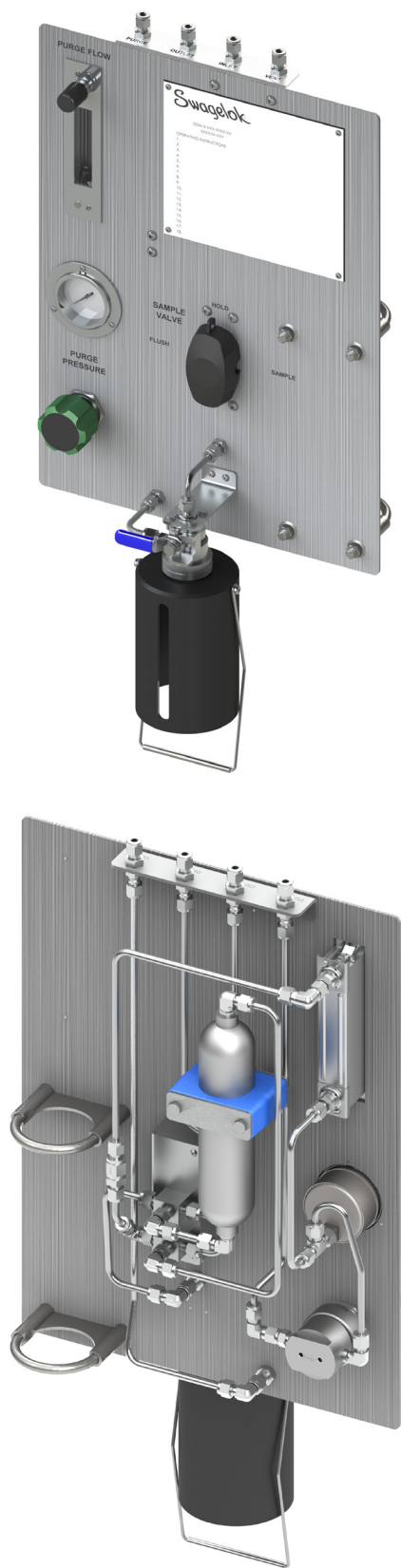


GSL6

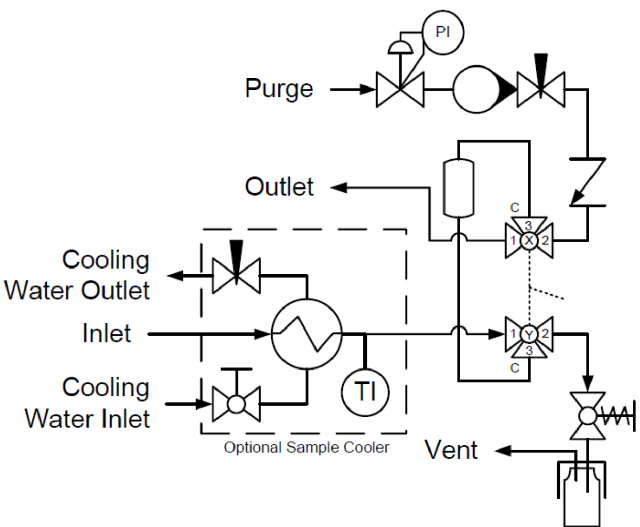
Fixed Volume Liquid Sampler

Panel Recommendations

- Used in fixed volume sampling applications that prevents overfilling of the sampler. A sample is drawn into a fixed volume reservoir, held, and then dispensed into the sampler.
- Recommended for ensuring 60-80% fill of the sample container.
Note: This requires a sample bottle that is larger than the fixed volume reservoir.



Flow Schematic



Valve Schematic

Sample Valve Handle Direction	Valve Orientation	
	Valve X	Valve Y
Flush ←		
Hold ↑		
Sample →		

GSL6

Fixed Volume Liquid Sampler

Panel Operation

1. Insert and secure bottle in fixture.
2. Switch Sample Valve to FLUSH position.
3. Allow sample to fill fixed volume cylinder.
4. Switch Sample Valve to SAMPLE position.
5. Hold valve open on fixture to take sample.
6. Adjust Purge Pressure and Purge Flow as necessary.
7. After dispensing sample, release valve on fixture.
8. Switch Sample Valve to FLUSH position.
9. Remove bottle from fixture.

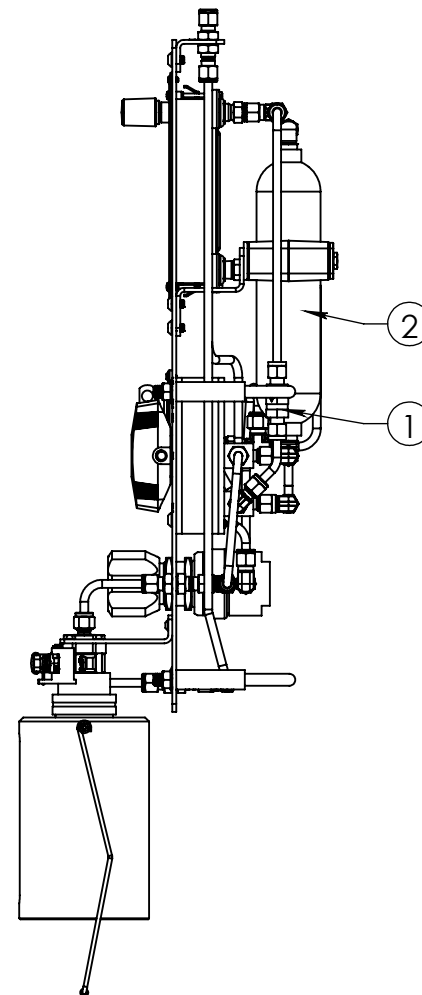
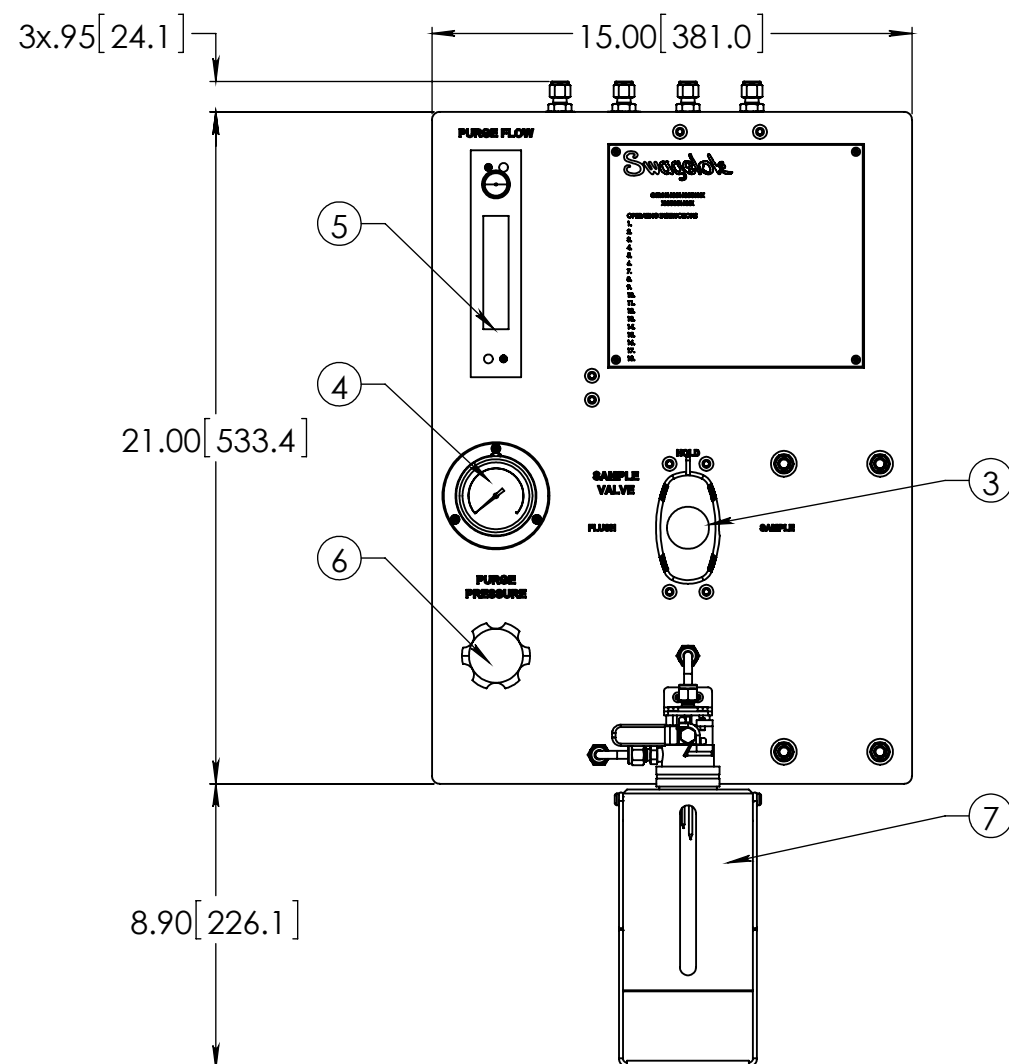
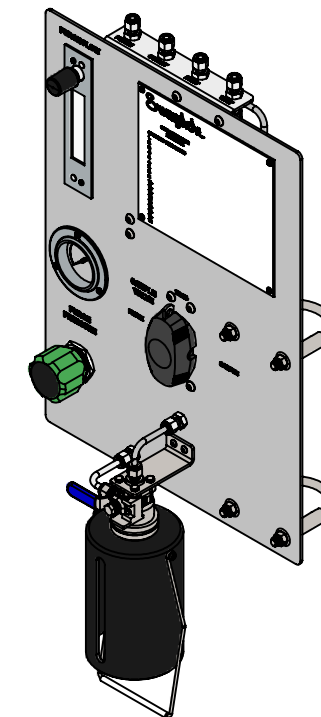
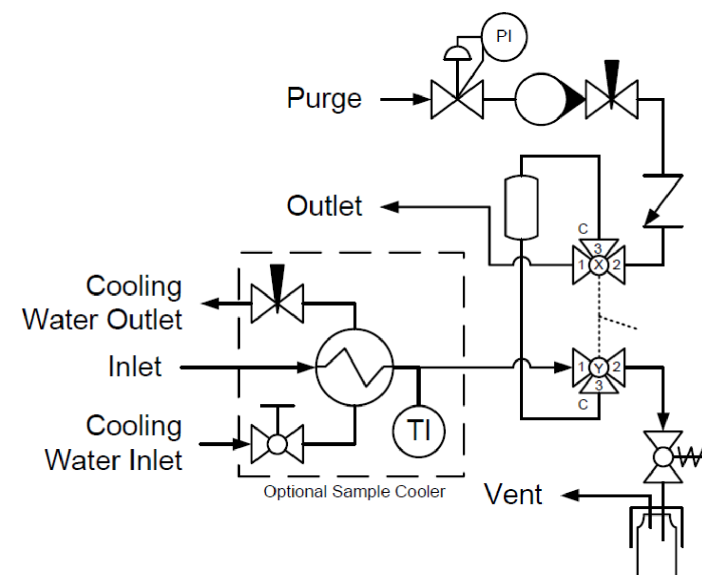
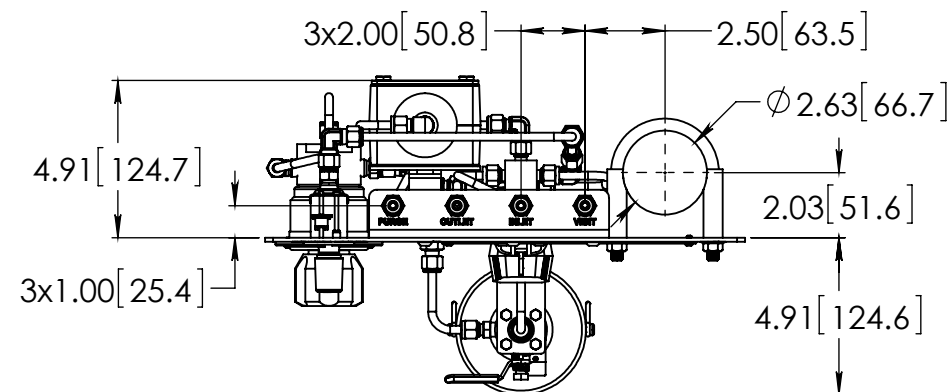


CASE
NO.

THIS ASSEMBLY DESIGN, FUNCTION, AND APPLICATION
ARE THE EXPRESS SOLE RESPONSIBILITY OF THE PURCHASER.

PART NO. **GSL-6**

REV -



BILL OF MATERIAL

BILL OF MATERIAL			
ITEM	PART NUMBER	DESCRIPTION	QTY.
1	SS-CHS4-1/3	CH SERIES CHECK VALVE	1
2	304L-HDF4-300	300cc SAMPLE CYLINDER	1
3	SS-GSM-VALVE-2	43G SERIES 2-VALVE ASSEMBLY	1
4	PGI-63S-BG1-BAQX-G	S MODEL GAUGE, 0-1 BARG	1
5	VAF-G2-05L-1-0-WZ	G2 MODEL FLOWMETER, .1 - 1.0 NL/M AIR	1
6	KPR1CJA412A60000	KPR SERIES REGULATOR, 0-10 PSIG	1
7	SS-MVS-32OZ-32-S4-S4-VI	MVS SAMPLE VALVE, 32OZ BOSTON ROUND (SENTRY)	1
8	SS-400-2R-4	400 SERIES ADAPTER ELBOW	5
9	SS-400-2-4	400 SERIES MALE ELBOW	3
10	SS-400-3	400 SERIES UNION TEE	1
11	SS-400-61	400 SERIES BULKHEAD UNION	6
12	SS-400-1-4	400 SERIES MALE CONNECTOR	1
13	SS-4-TA-1-4	1/4" TA MALE ADAPTER	2
14	SS-400-9	400 SERIES UNION ELBOW	2
15	304-GSL-BRKT-9	2" CYLINDER SUPPORT BRACKET	1
16	304-S6-PP-32T	2" TUBE SUPPORT CLAMP	1
17	304-GSL-PANEL-67	MOUNTING PANEL, 304 SS	1
18	304-GSL-BRKT-4	BULKHEAD BRACKET, 304 SS	1
19	3042T57	2" PIPE CLAMP, 304 SS	2
20	98164A133	#8-32 x 1/4" BHCS, 18-8 SS	2
21	97763A262	1/4-20 x 3/8" BHCS, 18-8 SS	8
22	98164A106	#6-32 x 1/4" BHCS, 18-8 SS	7
23	SS-T4-S-035-20	1/4" X .035 SS TUBING	153.18 in.

CONCEPT DRAWING



- DRAWING NOT TO SCALE.
- DIMENSIONS ARE INCHES NEXT TO [MILLIMETERS].
- DRAWING IS SUBJECT TO CHANGE WITHOUT NOTICE.

THIS ASSEMBLY DESIGN, FUNCTION, AND APPLICATION ARE THE EXPRESS
SOLE RESPONSIBILITY OF THE PURCHASER. PURCHASER IS SOLELY
RESPONSIBLE FOR THE FIT AND FUNCTION OF ANY **PURCHASER SPECIFIED**
COMPONENTS.

DRAWN BY
KEV Mar-3-17

APPROVED BY

TITLE

LIQUID GRAB SAMPLE PANEL

PART NO. **GSL-6** REV -