

GSL5

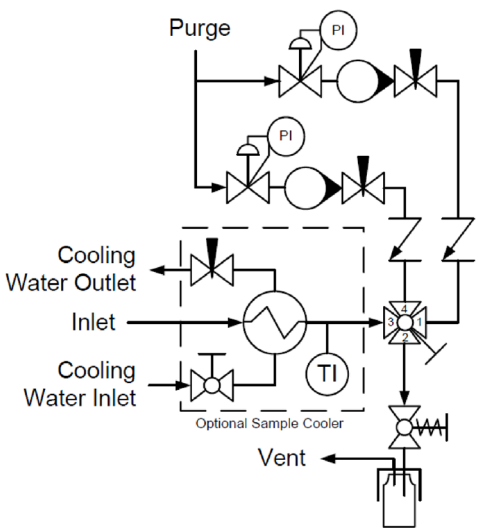
Liquid Sampler with Back Purge

Panel Recommendations

- Used in general liquid sampling applications.
- Purge and back purge allow both the needle and inlet line to be purged before and/or after sample collection.
- Recommended for non-toxic liquids with long stagnant sample inlet lines.
- Not recommended for processes that cannot tolerate the introduction of purge gas.



Flow Schematic



Valve Schematic

Sample Valve Handle Direction	Valve Orientation
Sample ↓	
Back Purge ←	
Off ↑	
Purge →	

GSL5

Liquid Sampler with Back Purge

Panel Operation

1. Insert and secure bottle in fixture.
2. Switch Sample Valve to BACK PURGE position.
3. Adjust Back Purge Pressure and Back Purge Flow as necessary.
4. Switch Sample Valve to SAMPLE position.
5. Hold valve open on fixture to take sample.
6. After dispensing sample, release valve on fixture.
7. Switch Sample Valve to PURGE position.
8. Hold valve open on fixture to purge fixture.
9. Adjust Purge Pressure and Purge Flow as necessary.
10. Release valve on fixture.
11. Switch Sample Valve to OFF position.
12. Remove bottle from fixture.



