

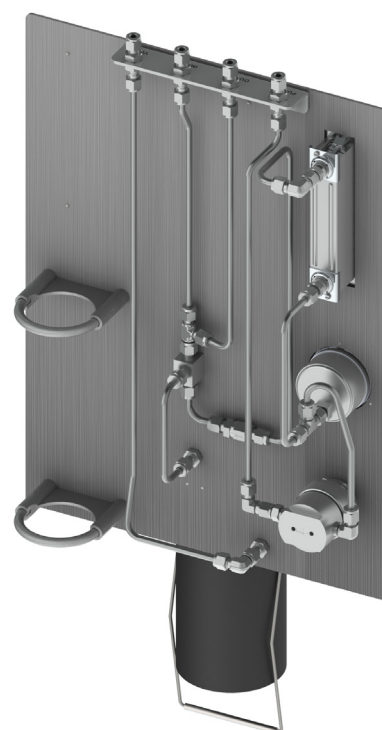
## Liquid Bottle Sampler

### GSL4

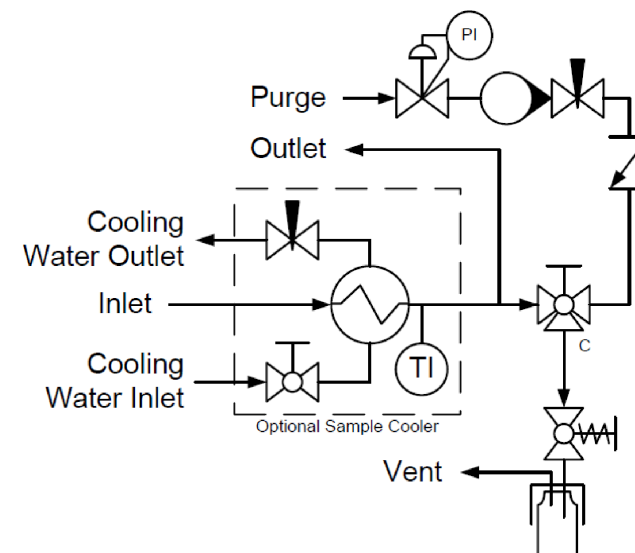
*Continuous Flow Liquid Sampler  
with Purge*

#### Panel Recommendations

- Used in general liquid sampling applications when continuous flow is required from inlet to outlet. Purge option clears sample fluid from the sampler before and/or after sample collection.
- Recommended for non-toxic liquids that may settle in the sampler.
- Suggested for samplers installed directly in the sample stream, in a fast loop, or where long sample transport lines are used.



Flow Schematic



## Liquid Bottle Sampler

### GSL4

*Continuous Flow Liquid Sampler  
with Purge*

#### Panel Operation

1. Insert and secure bottle in fixture.
2. Switch Sample Valve to SAMPLE position.
3. Hold valve open on fixture to take sample.
4. After dispensing sample, release valve on fixture.
5. Switch Sample Valve to PURGE position.
6. Hold valve open on fixture to purge.
7. Adjust Purge Pressure and Purge Flow as necessary.
8. Release valve on fixture.
9. Switch Sample Valve to OFF position.
10. Remove bottle from fixture.

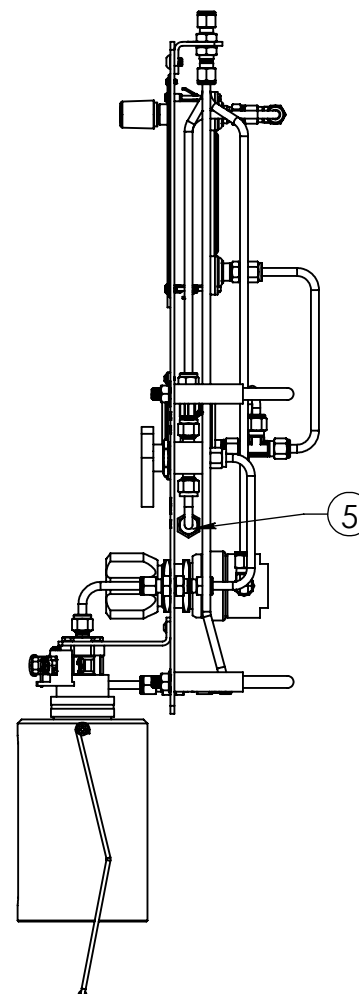
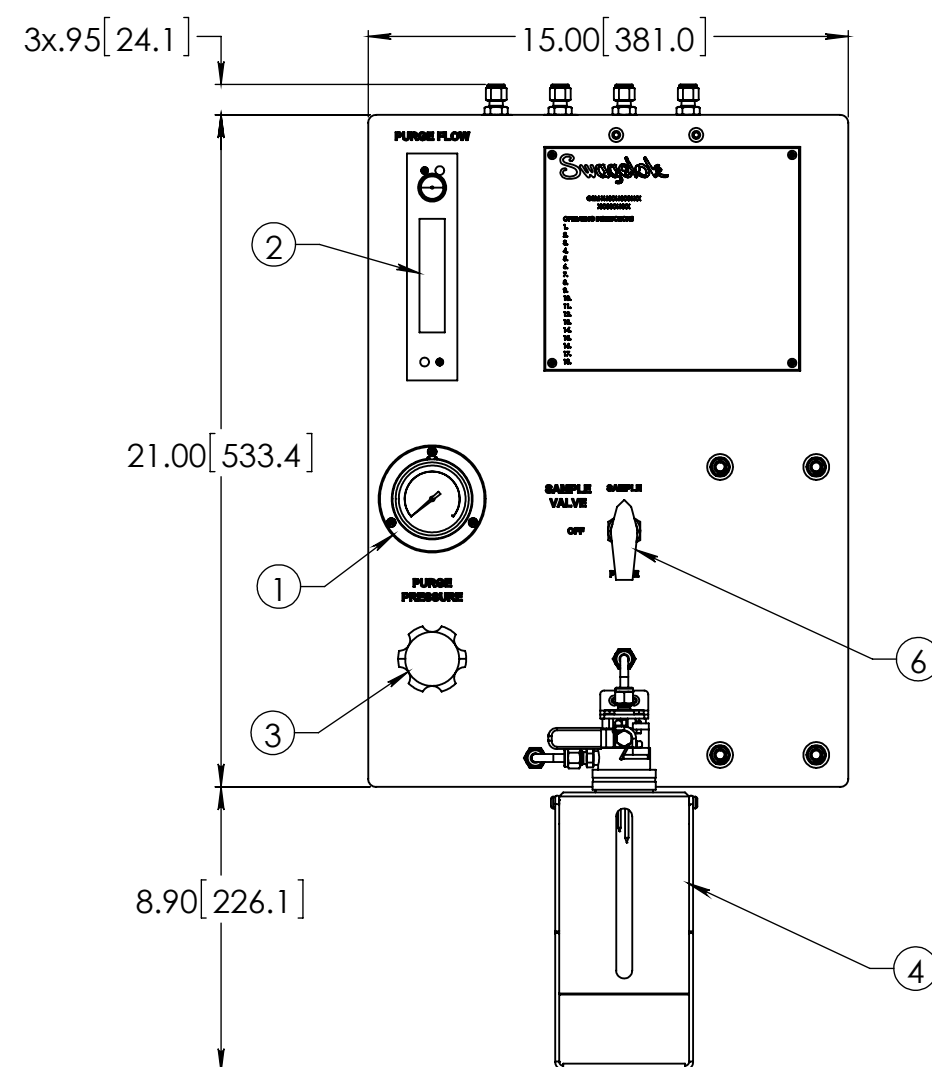
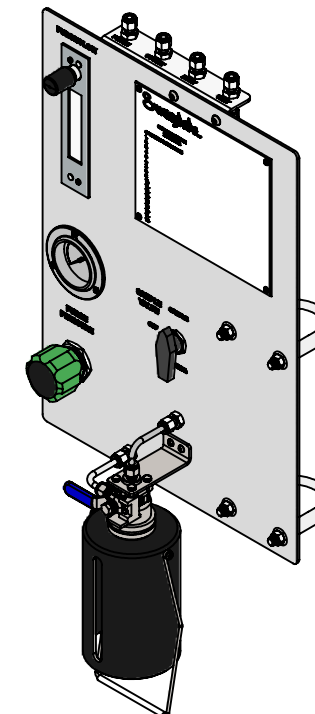
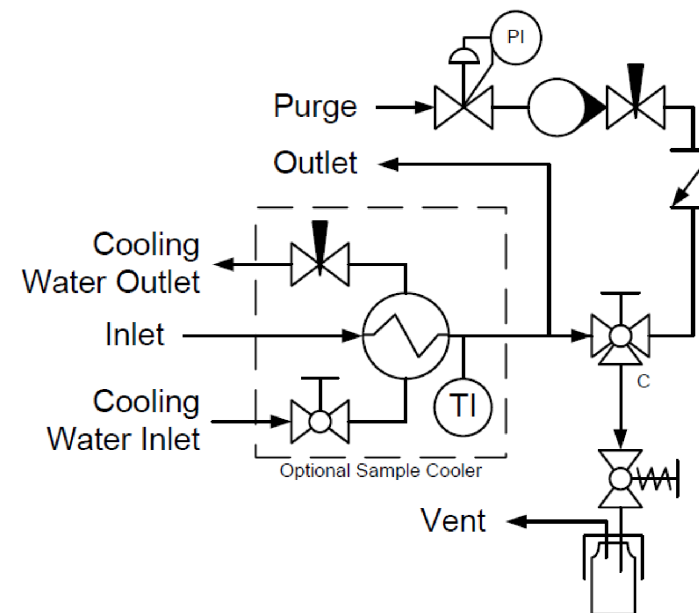
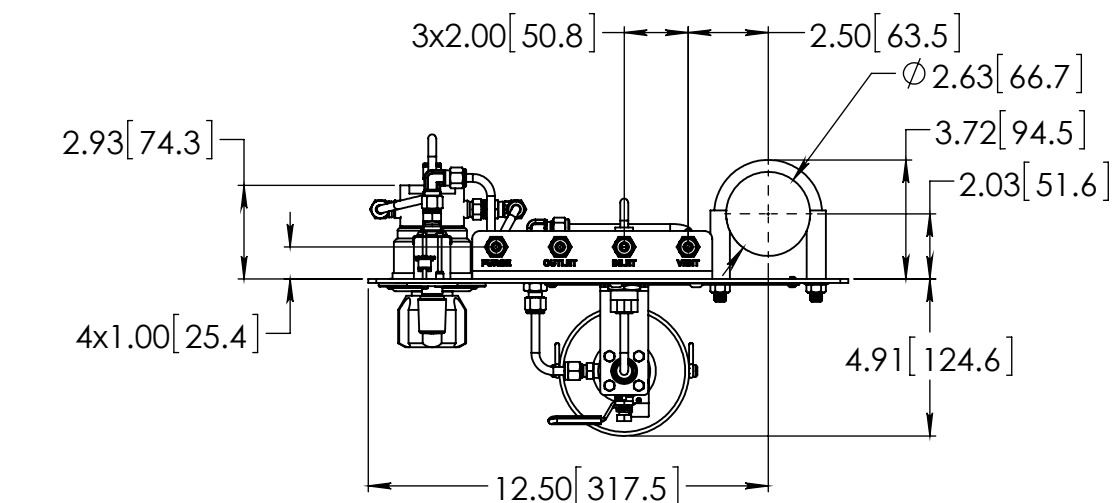
Swagelok®

Swagelok London



CASE  
NO.

THIS ASSEMBLY DESIGN, FUNCTION, AND APPLICATION  
ARE THE EXPRESS SOLE RESPONSIBILITY OF THE PURCHASER.

PART NO. **GSL-4**

## BILL OF MATERIAL

<b>BILL OF MATERIAL</b>			
<u>ITEM</u>	<u>PART NUMBER</u>	<u>DESCRIPTION</u>	<u>QTY.</u>
1	PGI-63S-BG1-BAQX-G	S MODEL GAUGE, 0-1 BARG	1
2	VAF-G2-05L-1-0-WZ	G2 MODEL FLOWMETER, .1 - 1.0 NL/M AIR	1
3	KPR1CJA412A60000	KPR SERIES REGULATOR, 0-10 PSIG	1
4	SS-MVS-32OZ-32-S4-S4-VI	MVS SAMPLE VALVE, 32OZ BOSTON ROUND (SENTRY)	1
5	SS-CHS4-1/3	CH SERIES CHECK VALVE	1
6	SS-43GXS4	43G SERIES 3-WAY BALL VALVE	1
7	SS-400-61	400 SERIES BULKHEAD UNION	6
8	SS-400-2R-4	400 SERIES ADAPTER ELBOW	1
9	SS-400-3-4TAT	400 SERIES ADAPTER TEE	1
10	SS-400-2-4	400 SERIES MALE ELBOW	1
11	SS-400-3	400 SERIES UNION TEE	1
12	SS-400-1-4	400 SERIES MALE CONNECTOR	1
13	SS-4-TA-1-4	1/4" TA MALE ADAPTER	2
14	SS-400-9	400 SERIES UNION ELBOW	2
15	304-GSL-PANEL-24	MOUNTING PANEL, 304 SS	1
16	304-GSL-BRKT-4	BULKHEAD BRACKET, 304 SS	1
17	3042T57	2" PIPE CLAMP, 304 SS	2
18	97763A262	1/4-20 x 3/8" BHCS, 18-8 SS	2
19	98164A106	#6-32 x 1/4" BHCS, 18-8 SS	7
20	98164A133	#8-32 x 1/4" BHCS, 18-8 SS	2
21	SS-T4-S-035-20	1/4" X .035 SS TUBING	124.24 in

## CONCEPT DRAWING



- DRAWING NOT TO SCALE.
- DIMENSIONS ARE INCHES NEXT TO [MILLIMETERS].
- DRAWING IS SUBJECT TO CHANGE WITHOUT NOTICE.

THIS ASSEMBLY DESIGN, FUNCTION, AND APPLICATION ARE THE EXPRESS SOLE RESPONSIBILITY OF THE PURCHASER. PURCHASER IS SOLELY RESPONSIBLE FOR THE FIT AND FUNCTION OF ANY **PURCHASER SPECIFIED** COMPONENTS.

DRAWN BY  
KEV Mar-3-17

APPROVED BY

TITLE

LIQUID GRAB SAMPLE PANEL

PART NO. **GSL-4**