

## Liquid Bottle Sampler

### GSL3

*Continuous Flow Liquid Sampler  
without Purge*

#### Panel Recommendations

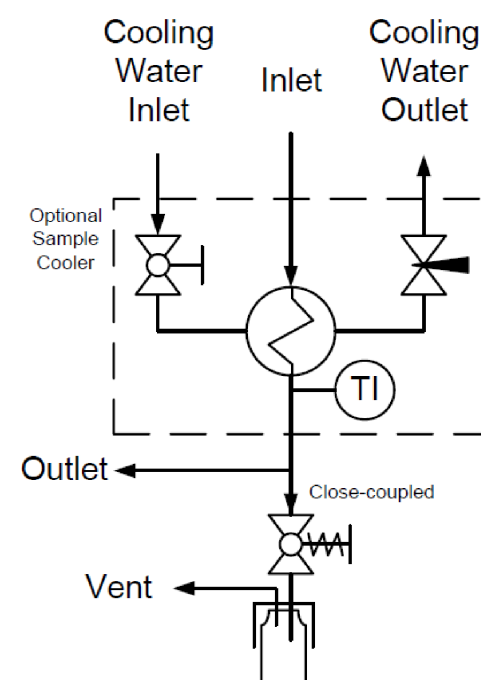
- Used in general liquid sampling applications when continuous flow is required from inlet to outlet.
- Recommended for non-toxic liquids.
- Suggested for samplers installed directly in the sample stream, in a fast loop, or where long sample transport lines are used.
- Sample system has an inlet port to supply the sample panel and an outlet port to allow for bypass flow.

Swagelok®

Swagelok London



#### Flow Schematic



## Liquid Bottle Sampler

### GSL3

*Continuous Flow Liquid Sampler  
without Purge*

#### Panel Operation

1. Insert and secure bottle in fixture.
2. Hold valve open on fixture to take sample.
3. After dispensing sample, release valve on fixture.
4. Remove bottle from fixture.



CASE NO.

THIS ASSEMBLY DESIGN, FUNCTION, AND APPLICATION ARE THE EXPRESS SOLE RESPONSIBILITY OF THE PURCHASER.

PART NO. 

GSL-3

REV -

CONCEPT DRAWING

- DRAWING NOT TO SCALE.

- DIMENSIONS ARE INCHES NEXT TO [MILLIMETERS].

- DRAWING IS SUBJECT TO CHANGE WITHOUT NOTICE.

THIS ASSEMBLY DESIGN, FUNCTION, AND APPLICATION ARE THE EXPRESS SOLE RESPONSIBILITY OF THE PURCHASER. PURCHASER IS SOLELY RESPONSIBLE FOR THE FIT AND FUNCTION OF ANY **PURCHASER SPECIFIED** COMPONENTS.

DRAWN BY

KEV Mar-3-17

APPROVED BY

TITLE

LIQUID GRAB SAMPLE PANEL

PART NO.

GSL-3

REV -

BILL OF MATERIAL			
ITEM	PART NUMBER	DESCRIPTION	QTY.
1	SS-MVS-32OZ-32-S4-S4-VI	MVS SAMPLE VALVE, 32OZ BOSTON ROUND (SENTRY)	1
2	SS-400-3-4TAT	400 SERIES ADAPTER TEE	1
3	SS-400-2R-4	400 SERIES ADAPTER ELBOW	3
4	SS-400-61	400 SERIES BULKHEAD UNION	6
5	304-GSL-PANEL-3	MOUNTING PANEL, 304 SS	1
6	304-GSL-BRKT-2	BULKHEAD BRACKET, 304 SS	1
7	3042T57	2" PIPE CLAMP, 304 SS	2
8	97763A262	1/4-20 x 3/8" BHCS, 18-8 SS	2
9	98164A106	#6-32 x 1/4" BHCS, 18-8 SS	4
10	98164A133	#8-32 x 1/4" BHCS, 18-8 SS	2
11	SS-T4-S-035-20	1/4" X .035 SS TUBING	49.54 in.