

## GSL2

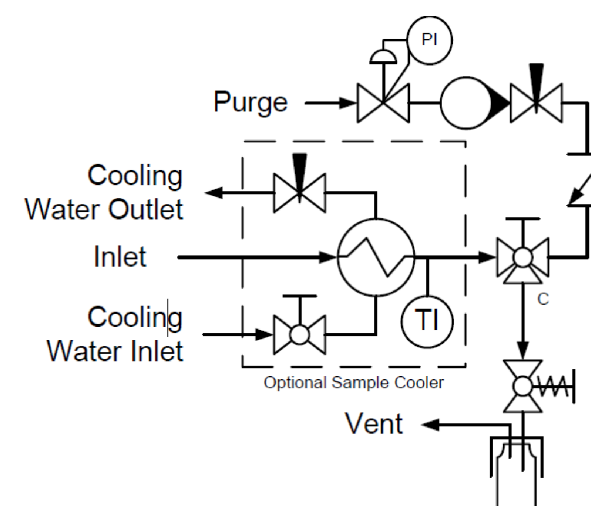
Simple Liquid Sampler with Purge

### Panel Recommendations

- Used in general liquid sampling applications. Purge option clears sample fluid before and/or after sample collection.
- Recommended for non-toxic liquids that may settle in the sampler.



Flow Schematic



## GSL2

Simple Liquid Sampler with Purge

### Panel Operation

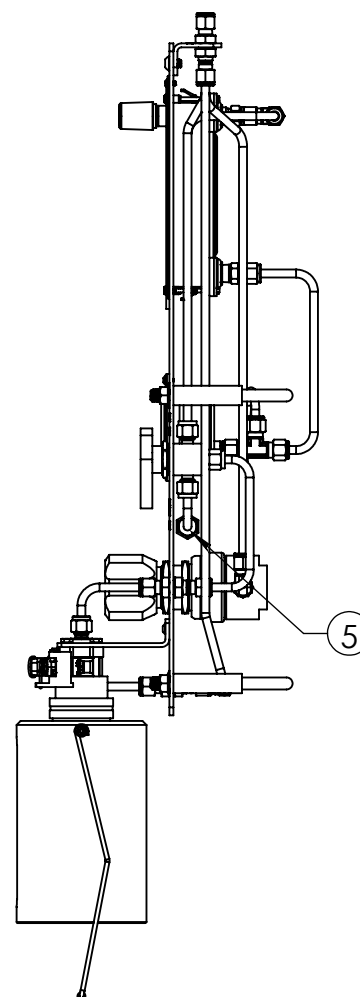
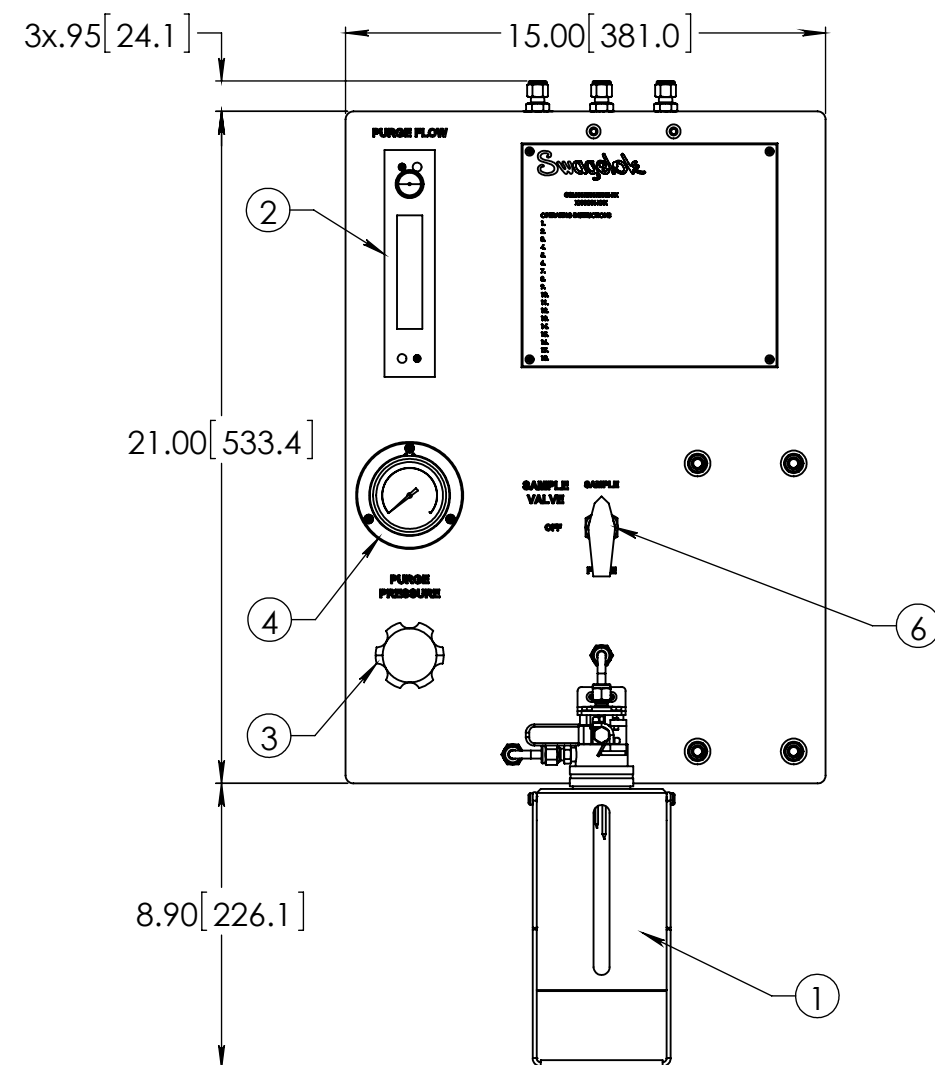
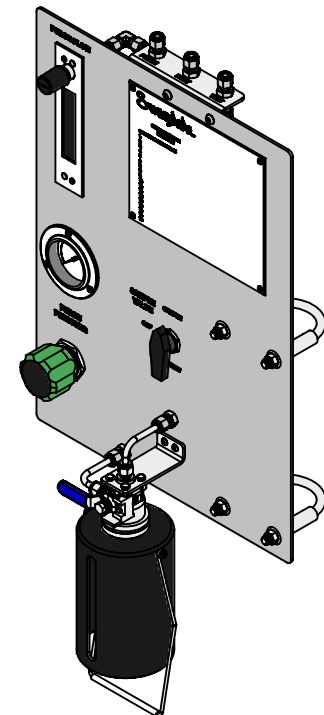
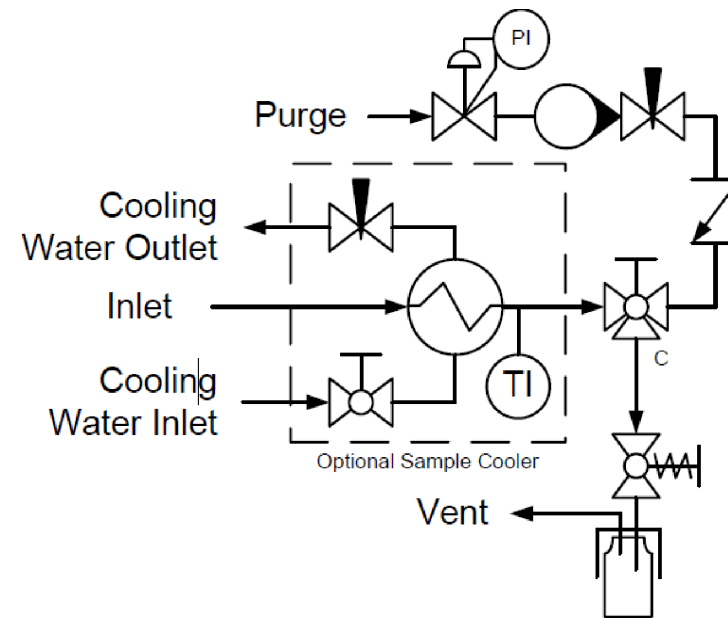
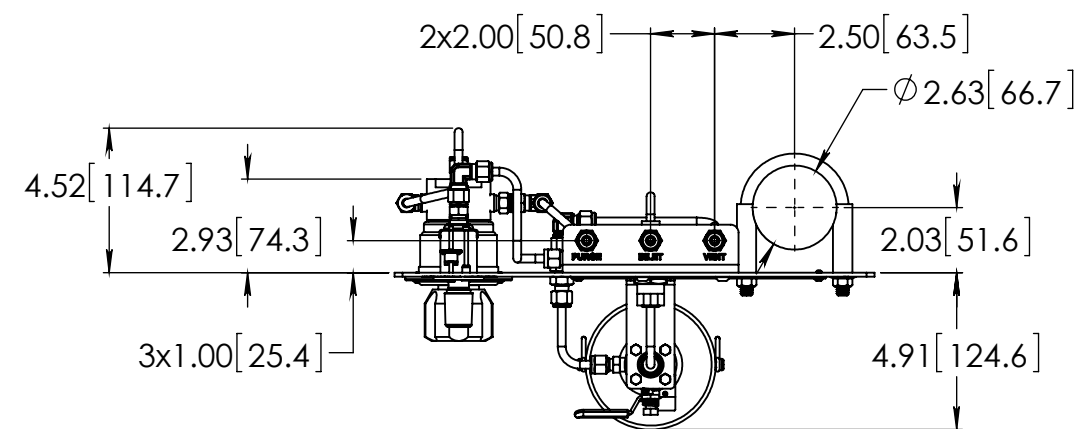
1. Insert and secure bottle in fixture.
2. Switch Sample Valve to SAMPLE position.
3. Hold valve open on fixture to take sample.
4. After dispensing sample, release valve on fixture.
5. Switch Sample Valve to PURGE position.
6. Hold valve open on fixture to purge.
7. Adjust Purge Pressure and Purge Flow as necessary.
8. Release valve on fixture.
9. Switch Sample Valve to OFF position.
10. Remove bottle from fixture.

CASE  
NO.

THIS ASSEMBLY DESIGN, FUNCTION, AND APPLICATION  
ARE THE EXPRESS SOLE RESPONSIBILITY OF THE PURCHASER.

PART NO. **GSL-2**

REV -



## BILL OF MATERIAL

BILL OF MATERIAL			
ITEM	PART NUMBER	DESCRIPTION	QTY.
1	SS-MVS-32OZ-32-S4-S4-VI	MVS SAMPLE VALVE, 32OZ BOSTON ROUND (SENTRY)	1
2	VAF-G2-05L-1-0-WZ	G2 MODEL FLOWMETER, .1 - 1.0 NL/M AIR	1
3	KPR1CJA412A60000	KPR SERIES REGULATOR, 0-10 PSIG	1
4	PGI-63S-BG1-BAQX-G	S MODEL GAUGE, 0-1 BARG	1
5	SS-CHS4-1/3	CH SERIES CHECK VALVE	1
6	SS-43GXS4	43G SERIES 3-WAY BALL VALVE	1
7	304-GSL-PANEL-24	MOUNTING PANEL, 304 SS	1
8	304-GSL-BRKT-3	BULKHEAD BRACKET, 304 SS	1
9	3042T57	2" PIPE CLAMP, 304 SS	2
10	97763A262	1/4-20 x 3/8" BHCS, 18-8 SS	2
11	98164A106	#6-32 x 1/4" BHCS, 18-8 SS	7
12	98164A133	#8-32 x 1/4" BHCS, 18-8 SS	2
13	SS-400-61	400 SERIES BULKHEAD UNION	5
14	SS-400-2R-4	400 SERIES ADAPTER ELBOW	1
15	SS-400-2-4	400 SERIES MALE ELBOW	1
16	SS-400-3	400 SERIES UNION TEE	1
17	SS-400-1-4	400 SERIES MALE CONNECTOR	1
18	SS-4-TA-1-4	1/4" TA MALE ADAPTER	2
19	SS-400-9	400 SERIES UNION ELBOW	2
20	SS-T4-S-035-20	1/4" X .035 SS TUBING	112.91 in.

### CONCEPT DRAWING



- DRAWING NOT TO SCALE.
- DIMENSIONS ARE INCHES NEXT TO [MILLIMETERS].
- DRAWING IS SUBJECT TO CHANGE WITHOUT NOTICE.

THIS ASSEMBLY DESIGN, FUNCTION, AND APPLICATION ARE THE EXPRESS SOLE RESPONSIBILITY OF THE PURCHASER. PURCHASER IS SOLELY RESPONSIBLE FOR THE FIT AND FUNCTION OF ANY **PURCHASER SPECIFIED** COMPONENTS.

DRAWN BY  
KEV Mar-3-17

APPROVED BY

TITLE	LIQUID GRAB SAMPLE PANEL
-------	--------------------------

PART NO. **GSL-2** REV -