

GSM-G-1(-N)

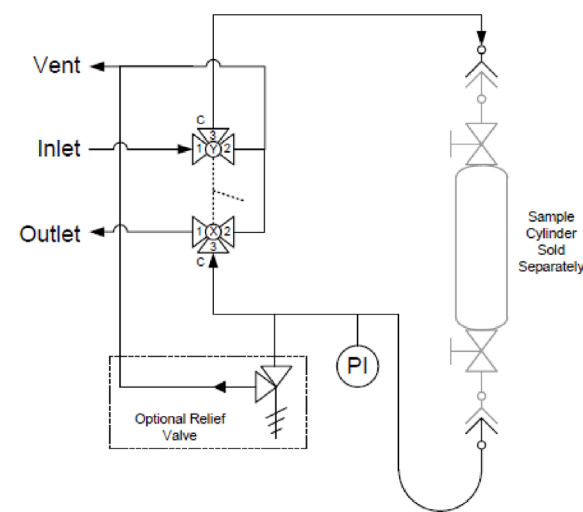
Standard Gas Sampler without Purge

Panel Recommendations

- Used in general gas sampling applications.
- Recommended for non-toxic gases.
- Suggested for systems when the return is sent to flare.



Flow Schematic



Valve Schematic

Sample Valve Handle Direction	Valve Orientation	
	Valve X	Valve Y
Sample ←		
Off ↑		
Vent →		

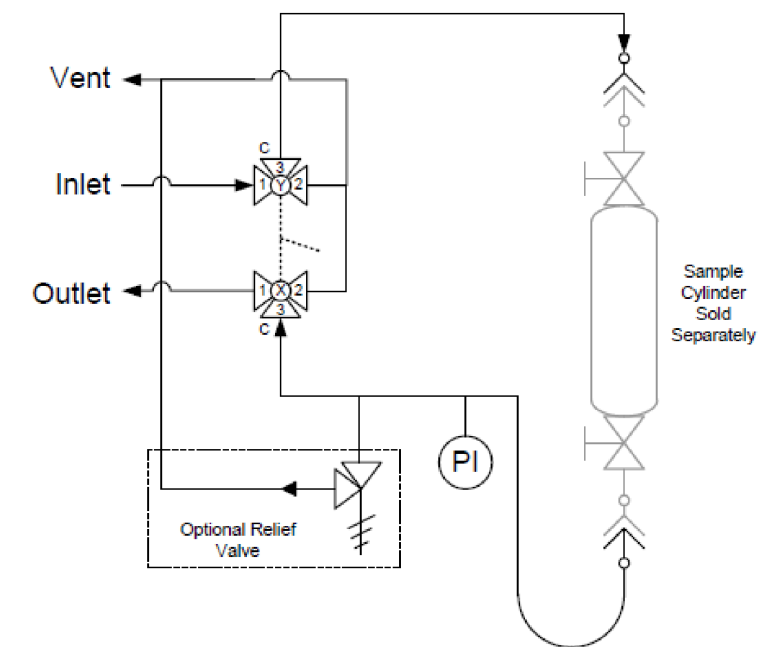
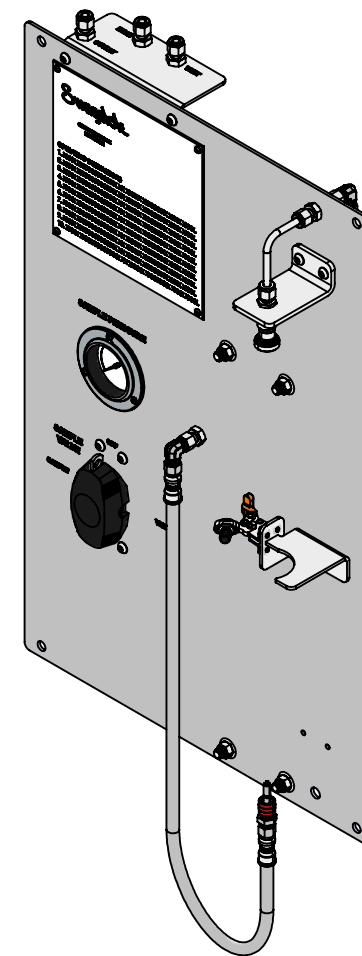
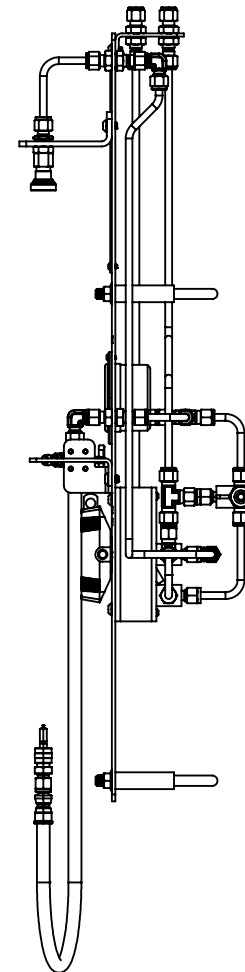
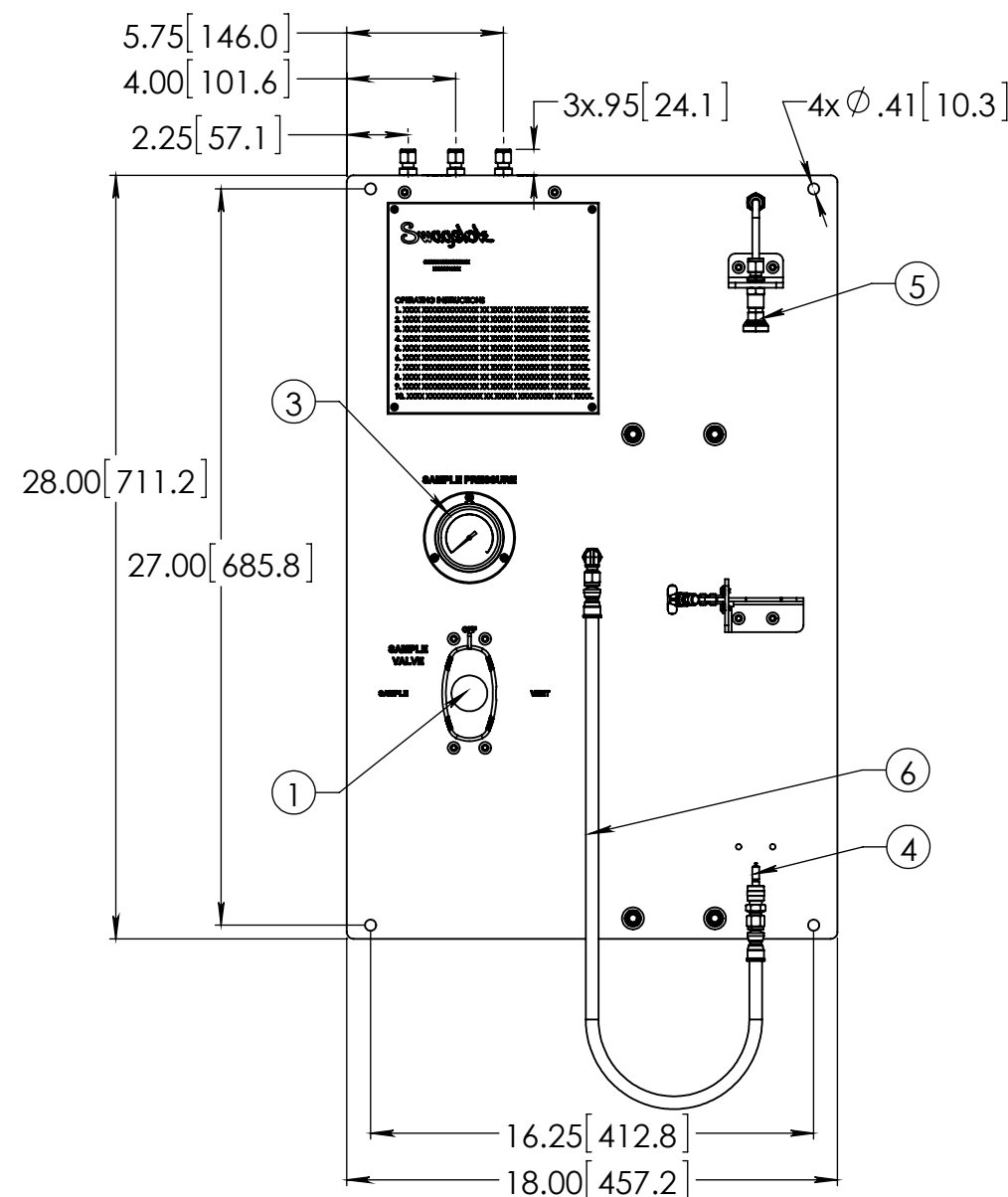
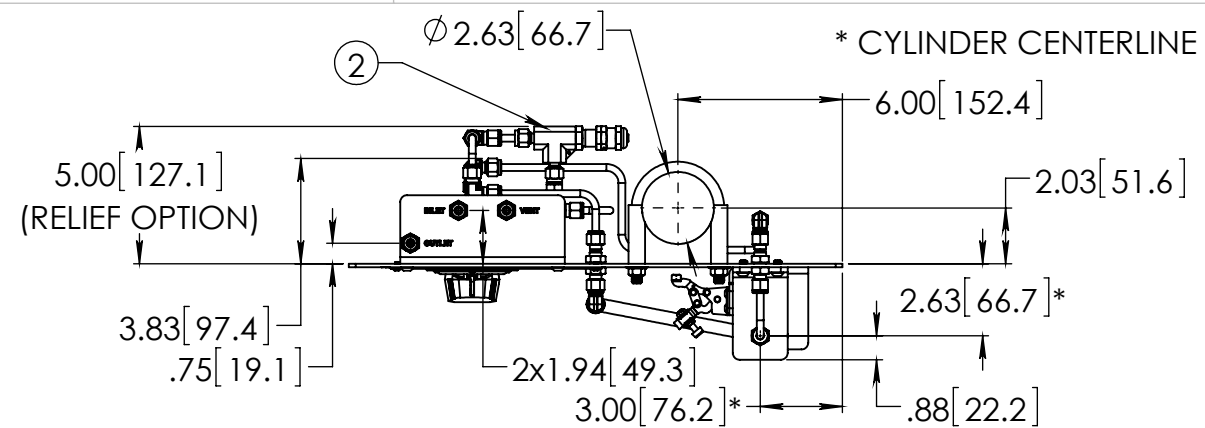
GSM-G-1(-N)

Standard Gas Sampler without Purge

Panel Operation

1. Turn Sample Valve to VENT position.
2. Connect cylinder to quick connect on panel.
3. Hold cylinder and close clamp to secure.
4. Connect hose to cylinder.
5. Open cylinder valves and turn Sample Valve to SAMPLE position.
6. Allow fluid to flow until cylinder is full.
7. Turn Sample Valve to OFF position and close cylinder valves.
8. Turn Sample Valve to VENT position.
9. Disconnect hose from cylinder.
10. Hold cylinder, open clamp, disconnect quick connect on panel and remove cylinder.





BILL OF MATERIAL

BILL OF MATERIAL			
ITEM	PART NUMBER	DESCRIPTION	QTY.
1	SS-GSM-VALVE-2	43G SERIES 2-VALVE GEARED ASSEMBLY	1
2	SS-4R3A-SETA	R SERIES RELIEF VALVE	1
3	PGI-63S-BG10-BAQX-G	S MODEL GAUGE, 0-10 BARG	1
4	SS-QC4-D-400	QC4 SERIES QUICK CONNECT STEM	1
5	SS-QC4-B1-400	QC4 SERIES QUICK CONNECT BODY	1
6	SS-FL4TA4TA4-30	FL4 SERIES HOSE, 30" LONG	1
7	SS-400-61	400 SERIES BULKHEAD UNION	5
8	SS-400-2R-4	400 SERIES REDUCER ELBOW	3
9	SS-400-3	400 SERIES UNION TEE	4
10	SS-401-PC	400 SERIES PORT CONNECTOR	2
11	304-GSM-PANEL	MOUNTING PANEL, 304 SS	1
12	304-GSM-BRKT-1	BULKHEAD BRACKET, 304 SS	1
13	304-GSM-BRKT-2	QC4 QUICK CONNECT BRACKET, 304 SS	1
14	304-GSM-BRKT-5	2" CYLINDER BRACKET, 304 SS	1
15	97763A262	1/4-20 x 3/8" BHCS, 18-8 SS	10
16	98164A106	BHCS, 6-32X .25	7
17	98164A133	#8-32 x 1/4" BHCS, 18-8 SS	4
18	3042T57	2" PIPE CLAMP, 304 SS	2
19	305-U	COMPACT CLAMPS	1
20	SS-T4-S-035-20	1/4" X .35 SS TUBING	129.48 in.

CONCEPT DRAWING



- DRAWING NOT TO SCALE.
- DIMENSIONS ARE INCHES NEXT TO [MILLIMETERS].
- DRAWING IS SUBJECT TO CHANGE WITHOUT NOTICE.

THIS ASSEMBLY DESIGN, FUNCTION, AND APPLICATION ARE THE EXPRESS
SOLE RESPONSIBILITY OF THE PURCHASER. PURCHASER IS SOLELY
RESPONSIBLE FOR THE FIT AND FUNCTION OF ANY **PURCHASER SPECIFIED**
COMPONENTS.

DRAWN BY
YDY Mar-6-17

APPROVED BY

TITLE

GRAP SAMPLE MODULE

PART NO. GSM-G-1-XXX-XXXXN-S4

REV -