

Swagelok Seal Support Evaluation & Advisory Services



API Plan Type: Plan 53A Issue #: 149

Pump Number: MP-397A
 Unit Name: Epoxy 2 - Hybrid
 Location: Hybrid - D-397

General Information
 Tubing Material: Stainless steel
 Tubing Size: 1/2" tubing touches the shroud
 Pump NPT Connection: fitting inside shroud 1/2" piping lift check valve not always effective
 Seal Pot Connection Type: NPT
 Seal Pot Connection Size: 1/2"
 Barrier Fluid: unknown
 Temperature: 60/60 F
 Pressure: 25 labeled 25 psig
 Pot Volume: 2.14 Gal
 Pot Manufacturer: taco conoex
 Pot Material: Stainless steel
 Pot Style: flat weld caps
 height of pump centerline: 25"
 height of seal pot supply port: 38"
 height of seal pot return port: 44"
 height of 0% M port: 43"
 height of 100% M port: 59"

Customer Specified Minimum Components

	Existing (Y/N)	Functioning (Y/N)	Deficiency (Y/N)
No/Shared Pressure Regulator	N		Y
Level Sensing Port Below Recirculation Port	N		Y
No port available for quick fill retrofit	Y		N
No Local Level Indication	N		Y

API Minimum Components

	Existing (Y/N)	Functioning (Y/N)	Deficiency (Y/N)
Pot Drain Valve	Y		N
Isolated Pressure Source w/ orifice, check valve, and shutoff valve	Y		N
Pot Quick-Fill Solution	N		Y
Long Radius Tubing Bends	N		Y
Minimum 1/2" tubing (3/4" recommended)	Y		N

Recommended Components

	Existing (Y/N)	Functioning (Y/N)	Recommendation (Y/N)
Pressure Gauge	Y		N
Pressure Transmitter	N		Y
Temperature Gauge	N		Y
Level Switch Hi/Low	N		Y
dP Level Transmitter	Y		N
Local Level Indication	N		Y
Inline Low Point Drain	Y	at pot	N
Cooling Coil	N		Y

System Rating

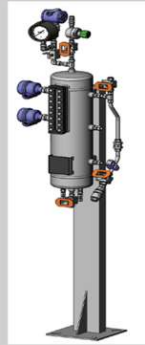
Customer Specified Deficiencies	3
API Deficiencies	2
Recommendations	5

Other Considerations

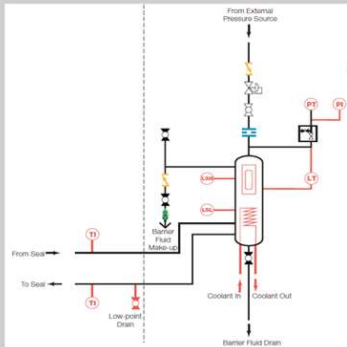
Issue Present (Y/N)	
PTFE Tape	Y
Unnecessary Threaded Fittings	Y
Block & Bleed on PI	
Relief Valve/ Back Pressure Regulator	

Do Not use PTFE tape on seal systems
 Eliminated unnecessary fittings
 Improves Maintainability
 Release Excess Pressure

General Comments



Typical System Arrangement



*Typical API Schematic (Optional Features in Red)

