

# Combating Counterfeit, Fraudulent and Suspect Items (CFSI)

## What CFSI Means:

**Counterfeit Items:** Items intentionally manufactured or altered to imitate a legitimate product.

**Fraudulent Items:** Items intentionally misrepresented to be something they are not.

The material, performance or characteristics of the items are knowingly misrepresented.

Items can have:

- incorrect identification
- falsified certification information
- inaccurate estimated end-of-life values

**Suspect Items:** Items thought to be counterfeit or fraudulent.

There is an indication that the item may not conform to the accepted standards, specifications or technical requirements.



Exterior of Suspect Tubing which is Corroding

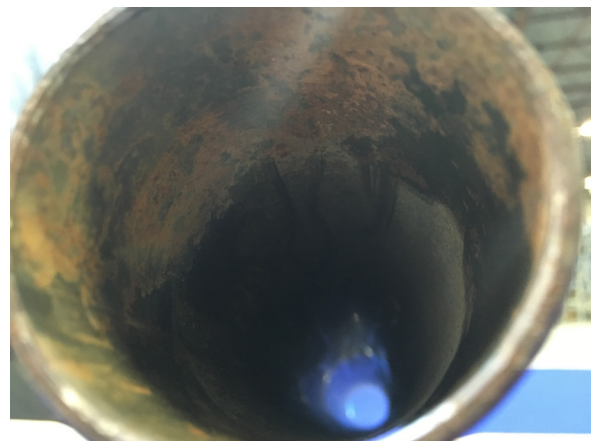
## What CFSI Means to You:

These substandard supplies pose immediate and potential threats to the safety of workers, costs, plant performance, the public and the environment.

*Why risk your critical applications with inferior products?*

**Swagelok Company combats CFSI with its Quality Culture directly tied to Safety.**

This culture includes a Top Down Commitment to Quality Assurance and Continuous Improvement.



Interior of Suspect Tubing which is Corroding

**Learn more about Swagelok's Quality Culture on the next page.**

Contact Your Authorized Swagelok Sales & Service Centre:

**Swagelok Ontario | Atlantic Canada**  
[sales@soac.swagelok.com](mailto:sales@soac.swagelok.com)

**Swagelok**

Swagelok Ontario | Atlantic Canada



# Swagelok's Quality Culture

## Quality Expectations

Swagelok expects its associates and suppliers to be passionately focused on achieving the brand promise of exceptional quality and unsurpassed service.

Here are some of the ways Swagelok promotes a Quality Culture and combats CFSI:

### Procurement Controls

- Procurement from melting mill
- Engineering approved specifications for all raw materials, services, and components
- Material Master defines all referenced specifications and drawings with revision level
- Swagelok supplies raw material to component suppliers

### Acceptance of Items

Swagelok checks for indicators of CFSI:

- Altered manufacturer's name, logo, serial number, date markings
- Items differing in configuration, dimensions, fit, finish, colour
- Markings on items or documentation are missing, unusual, altered
- Markings or documentation from country different than supplier
- Items, sold as new, exhibit evidence of prior use
- Performance inconsistent with specifications, certifications, test data
- Documentation that appears altered, incomplete, or lacks traceability

### Supplier Approval

- On-site audits of critical suppliers every three years
- Ongoing audits of key performance factors:  
Supplier NCRs, Inspection Results, Delivery Reliability Assessment
- Swagelok requires written approval of all subcontracted operations
- Swagelok audits all sub-suppliers
- **Preferred Supplier Profile for World-Class Suppliers**

### Raw Materials

- Forgings and Barstock for pressure retaining items
- 100% ultrasonic examination
- Random sampling for independent lab testing
- Lab holds ISO 17025 accreditation
- 10CFR50 Appendix B quality program
- Swagelok provides material for outside machining

### Training

- **Swagelok Associates receive annual training on CFSI detection, prevention, and control**



Quality Swagelok Associates  
Check Every Detail



Quality Raw Material Barstock

Contact Your Authorized Swagelok Sales & Service Centre:

**Swagelok**

Swagelok Ontario | Atlantic Canada

**Swagelok Ontario | Atlantic Canada**  
[sales@soac.swagelok.com](mailto:sales@soac.swagelok.com)

