



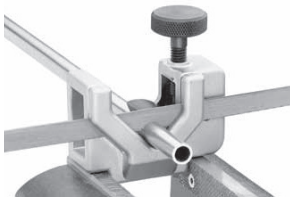
# Tool Reference Guide

Swagelok Bangalore | Chennai | Delhi | Hyderabad



## Tools and Accessories

Swagelok® offers a variety of tube cutting and preparation tools for virtually any industry or application. These tube cutting and preparation tools help you cut, bend, or deburr tubing for repeatable results and leak-tight performance.



### Tube Sawing Guide

[Catalog - MS-01-179](#)

The tube sawing guide holds tubing to enable fast, accurate cutting with a hacksaw. The guide helps reduce tubing preparation time, thereby speeding system assembly.

**Ordering Number: MS-TSG-16**



### Tube Cutter

[Catalog - MS-01-179](#)

The Swagelok tube cutter cuts stainless steel, soft copper and aluminum tubing from 3/16 to 1 in. and 4 to 25 mm outside diameter.

**Ordering Number: MS-TC-308**

**Replacement Wheel: MS-TCW-308**



### Cutting Tool for Hose and Soft Tubing

[Catalog - MS-01-180](#)

Use to cut nylon, polyethylene, or rubber hose, as well as vinyl or PFA tubing to the desired length for field assembly.

**Ordering Number: MS-HC-SC-1A**

**Replacement Blade: MS-HC-SC-1A-BLD**



### Tube Deburring Tool

[Catalog - MS-01-179](#)

After use of the tube cutter or tube sawing guide, Swagelok deburring tools deburr stainless steel, steel and hard alloy tube ends.

- Available in size 3/16 - 1 & 1/2 in. and 4 to 38 mm OD

**Ordering Number: MS-TDT-24**



### Tube Deburring Tool

[Catalog - MS-01-179](#)

For deburring smaller tubing diameters

- 1/4, 3/8, 9/16 in. ID

**Ordering Number: MS-44CT-27**



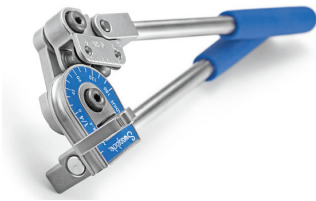
### Depth Marking Tool

[Catalog - MS-01-140](#)

Swagelok depth marking tools help ensure that tubing is bottomed on the shoulder inside the Swagelok tube fitting body.

- Available in sizes 1/4 - 1 in.

**Ordering Number: MS-DMT-\_\_\_\_\_**



## Hand Tube Bender

[Catalog - MS-01-](#)

179

Swagelok® Tube Benders provide high-quality bends on fractional and metric tubing made from materials that can be used with Swagelok tube fittings.

- Available in Sizes 1/8 - 1/2 in.

**Ordering Number: MS-HTB-\_\_\_\_\_**

**The hand tube bender cannot be used for SAF 2507 tubing over 1/4 in. or for medium-pressure tubing.**



## Preswaging Tool

[Catalog - MS-01-140](#)

For Swagelok tube fitting installations in close quarters, the Swagelok preswaging tool is a convenient accessory.

- Available in female nut sizes 1/16 - 1 in.
- Available in male nut sizes 1/16 - 1/2 in.

**Ordering Number: MS-ST-\_\_\_\_\_**



## Ratchet Wrench

[Catalog - MS-01-140](#)

The ratchet wrench is designed for use on Swagelok nuts for fitting installation.

- Available in sizes 1/8 - 1/2 in.

**Ordering Number MS-RW-\_\_\_\_\_**



## Tee Wrench

[Catalog - MS-01-140](#)

The tee wrench provides positive backup support when installing Swagelok union tees and crosses.

- Available in sizes 1/4 - 1/2 in.

**Ordering Number MS-TW-\_\_\_\_\_**



## Gap Inspection Gauge

[Catalog - MS-01-140](#)

Swagelok gap inspection gauges provide assurance to the installer or inspector that the fitting has been sufficiently pulled up on initial installation, whether you are using a Swagelok multihead hydraulic swaging unit (MHSU), air-actuated hydraulic swaging unit (AHSU), or wrench tightening. All metal Swagelok tube fittings are gaugeable, with the exception of a few forged bodies in aluminum.

- Available in female nut sizes 1/16 - 1 in.
- Available in male nut sizes 1/16 - 1/2 in.

**Ordering Number MS-IG-\_\_\_\_\_**



## Combination Seat and Pitch Gauge

Seat and pitch gauges are conveniently combined into one tool.

The seat gauge is used to determine end connection seat angles of 45°, 37° and 30°.

The pitch gauge is used to identify the thread pitch. Note that a pitch gauge may be Unified (threads per inch), Whitworth (threads per inch) or Metric (millimeters per thread) as marked on the back of each gauge form.

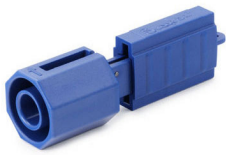
**Ordering Number: MS-TIK-PG**



## Vise Grip

Our vise grip is especially designed with a knock-out feature for locking onto a hex-nut during assembly.

**Ordering Number: MS-14-05**



### PFA Groove Cutter

[Catalog - MS-01-05](#)

PFA tubing MUST be grooved for use with PFA tube fittings. Use the Swagelok groove cutter tool. It is not necessary to groove tubing for use with metal fittings.

- Available in sizes 1/8 - 1/2 in.

**Ordering Number MS-GC-\_\_\_\_\_**



### Calipers

For measuring fractional and metric tubing diameters and threaded pipe connections. Made of stainless steel, approximate size 4 3/8" L X 1 1/2" W. Includes a protective case.

**Ordering Number MS-07-19**



### Manual Benchtop Bender

[Catalog - MS-01-179](#)

Provides high-quality bends on fractional and metric tubing made from materials that can be used with Swagelok tube fittings. This easy-to-use tube bender reduces installation time and effort as well as the potential for wrinkling or other damage to the tubing during bending. To be used with 1/4 - 1 & 1/4 in. (0.028 - 0.120 in. wall thickness) and 6 - 30 mm O.D. tubing (0.8 - 3.0 mm wall thickness)

**Ordering Number: MS-BTB-M-E-FKIT**



### Electric Tube Bender

[Catalog - MS-01-179](#)

Provides high-quality bends on fractional and metric tubing made from materials that can be used with Swagelok tube fittings. This easy-to-use tube bender reduces installation time and effort as well as the potential for wrinkling or other damage to the tubing during bending. To be used with 1 - 2 in. O.D. tubing (0.049 - 0.220 in. wall thickness) and 25 - 50 mm O.D. tubing (1.2 - 5.0 mm wall thickness)

**Ordering Number: MS-TBE-1-1-E-FKIT**



### Multihead Hydraulic Swaging Unit

[Catalog - MS-12-37](#)

Preswages Swagelok ferrules onto tubing prior to assembly and provides Swagelok tube fitting connections that are 100 % gaugeable upon initial installation. Multihead hydraulic and air-actuated hydraulic swaging units place no initial strain on nut or fitting body threads or on body seal surfaces; in addition, it reduces assembly and installation time and operator error. To be used with 1/2 - 2 in. Swagelok fittings.

- Available in sizes 1/2 - 1 in.

**Ordering Number: MS-MHSU-U-E-FKIT-M**

- Available in sizes 1 - 2 in.

**Ordering Number: MS-MHSU-O-E-FKIT-M**



### High-Volume Swaging Unit)

[Catalog - MS-02-441](#)

Preswages Swagelok tube fitting ferrules onto tubing prior to assembly. Easy to switch from one tube fitting size to another—no tools are needed to change sizes.

**Ordering Number: MS-HVSU-\_\_\_\_\_**



## Air-Actuated Hydraulic Swaging Unit

[Catalog - MS-02-155](#)

Requires only one unit with interchangeable tooling to swage 1/4 to 1/2 in. and 6 to 12 mm Swagelok tube fitting ferrule sizes and requires no threading of nut on or off the tooling.

**Ordering Number: MS-AHSU-E-FKIT (Fractional)**  
**: MS-AHSU-E-MKIT (Metric)**

## Leak Detectors, Lubricants, Sealants



## Snoop Liquid Leak Detector

[Catalog - MS-01-91](#)

Non-toxic formula

Technical Information:

- **Composition:** Deionized water and a surfactant
- **Temperature rating:** Can be used over a temperature range of 27 to 200°F (-2 to 93°C).
- Available in sizes 2 fl oz, 8 fl oz and 1 gal

**Ordering Number: MS-SNOOP-\_\_\_\_\_**



## Lubricants

[Catalog - MS-01-91](#)

Our wide selection of Goop™ thread lubricants makes assembling leak-tight connections even easier. Available in oil, halocarbon, and fluourosilicone-based varieties. Rated for use with stainless steel, titanium, aluminum, nickel-based alloys, and high-temperature alloys.

**Ordering Number: MS-TL-\_\_\_\_\_**



## Swak

[Catalog - MS-01-91](#)

Thread sealant used to lubricate pipe threads to prevent damage due to galling and seizure during assembly

- Available in sizes .2 fl oz, 1.69 fl oz, 8.45 fl oz

**Ordering Number: MS-PTS-\_\_\_\_\_**



## PTFE Free Pipe Thread Sealant

[Catalog - MS-01-91](#)

- Effective with pipe or fitting working pressure up to 10000 psig (689 bar) at room temperature
- Temperature rating -65 to 300°F (-53 to 148°C)
- Flash point - 355°F (179°C)

**Ordering Number: MS-TFS-50\_**



## PTFE Tape Pipe Thread Sealant

[Catalog - MS-01-91](#)

Features:

- Material conforms to Commercial Item Description A-A-58092
- Temperatures up to 450°F (232°C)
- Available in sizes 1/8" and up

**Ordering Number: MS-STR-\_\_\_\_\_**



## Tool Kits

Finding the right tool for the job will not be an issue when you have the Swagelok Tube Fitter's Toolbox on the jobsite.

### Master Installers Kit

[Catalog-BANGA-TK-01](#)

This toolbox contains a complete set of Swagelok hand tools specifically designed for fabricating tubing systems, including a trio of tube benders. The set of tools is designed for use with the three most common tube sizes: 1/4", 3/8", and 1/2" OD tubing. All of the tools are securely contained in a lockable, water-resistant case with wheels to make transporting easy. Refer the catalog for more details regarding the components available in this toolbox.

**Ordering Number: MS-KIT-MI-IN (Imperial)**  
**MS-KIT-MI-MM (Metric)**



### Compact Installers Kit

[Catalog-BANGA-TK-01](#)

This is a compact tool box specifically designed for Tube Fitters. All of the tools are securely contained in a lockable, water-resistant case. Refer the catalog for more details regarding the components available in this toolbox.

**Ordering Number: MS-KIT-CI-IN (Imperial)**  
**MS-KIT-CI-MM (Metric)**



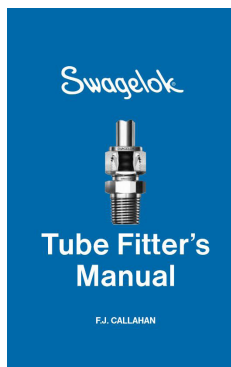


### Customised Tool Kits

If you need a customised Tool Kit, we can build it for you using the Swagelok components that you choose. Need more information?

Email us at [marketingbangalore@swagelok.com](mailto:marketingbangalore@swagelok.com)

## Manuals



### Tube Fitter's Manual

This manual covers tube fitting selection and installation. In addition, it covers topics such as handling tubing, testing and evaluating tube fitting performance, thread identification, pressure ratings and the hidden cost of leakage.

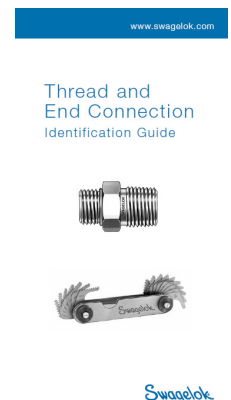
**Ordering Number: MS-13-03P**



### An Installer's Pocket Guide for Swagelok® Tube Fittings

This is a comprehensive guide which covers intermix/interchange with other manufacturers components, installation instructions, tubing, different types of fitting, replacement parts and tools & accessories.

[Catalog: MS-13-151](#)



### Thread and End Connection Identification Guide

This guide covers introduction to different thread and end connection terminologies, step by step identification procedure for thread and end connections, thread identification reference tables and others.

[Catalog: MS-13-77](#)



## Warranty Information

Swagelok products are backed by The Swagelok Limited Lifetime Warranty. For a copy, visit [www.swagelok.com](http://www.swagelok.com) or contact your authorised Swagelok representative.

## Contact Us

### Swagelok Bangalore

#1, Doddanakkundi Industrial Area  
Mahadevapura Post  
Bangalore - 560048  
Phone: 080-42669100  
Email: [bangalore@swagelok.com](mailto:bangalore@swagelok.com)

### Swagelok Delhi

414, Bestech Chamber  
B Block, Sushant Lok -1  
Gurgaon - 122009  
Phone: 0124-4045631/32/33  
Email: [delhi@swagelok.com](mailto:delhi@swagelok.com)

### Swagelok Chennai

A-6, 2nd Floor, Palani Towers  
#65, Venkatanarayana Road, T.Nagar  
Chennai - 600017  
Phone: 044-45502005/09  
Email: [chennai@swagelok.com](mailto:chennai@swagelok.com)

### Swagelok Hyderabad

3-6-422 & 422/A, 3rd Floor  
St No. 3, Main Road, Himayatnagar  
Hyderabad - 500029  
Phone: 040-40077652/53  
Email: [hyderabad@swagelok.com](mailto:hyderabad@swagelok.com)