

Latch/Lock Handle for 43X and 43GX Series Ball Valves

Swagelok

Assembly Instructions

This document contains instructions for replacing a standard valve handle with a latch/lock handle on the following 3-way ball valves:

43X series

- 43X (180° Rotation)
- 43XHL (180° Rotation)
- 43XH (90° Rotation)
- 43XL (90° Rotation)

43GX series

- 43GX (180° Rotation)
- 43GXHL (180° Rotation)
- 43GXH (90° Rotation)
- 43GXHL (90° Rotation)

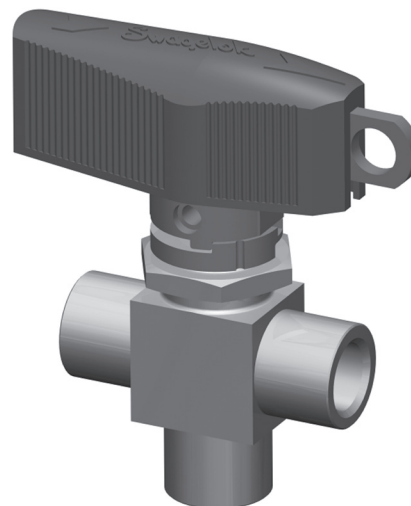
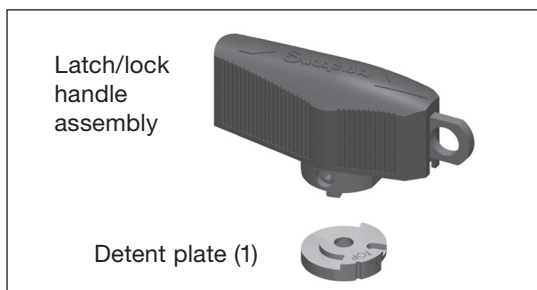
Tool Requirements

Valve Series	Hex Wrench
All 43X	3/32 in.
All 43GX	



Kit Contents

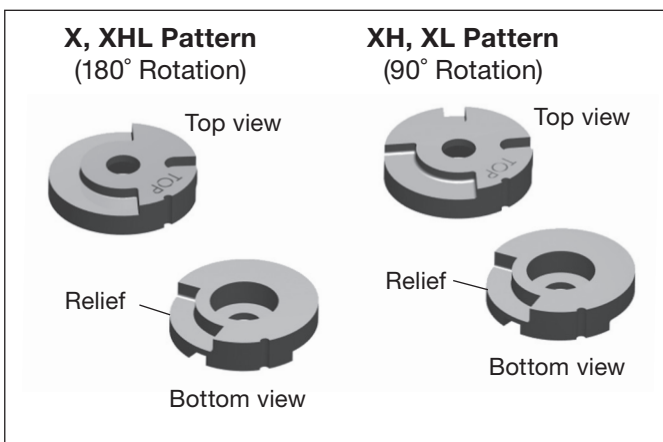
- Latch/lock handle assembly
- Detent plate (1 of 2 styles)



Shown: Swagelok® 43GX series valve with latch/lock handle

Valve contents may be under pressure. See packing adjustment note, page 2.

Detent Plate Identification

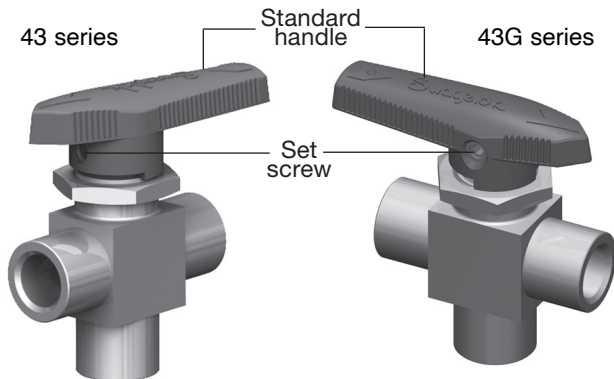


Shown: Swagelok 43GX series detent plates

Replacing Standard Handle with Latch/Lock Handle

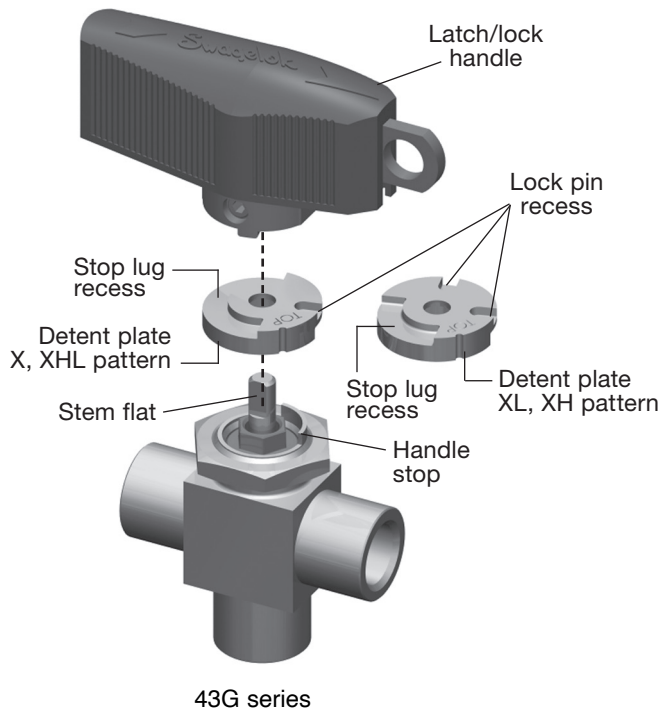
Handle Disassembly

1. Before removing the **standard handle**, make note of current **handle direction**; the **latch/lock handle** must be installed in the **same direction**.
2. Loosen the handle **set screw** and remove the **standard handle** from valve.

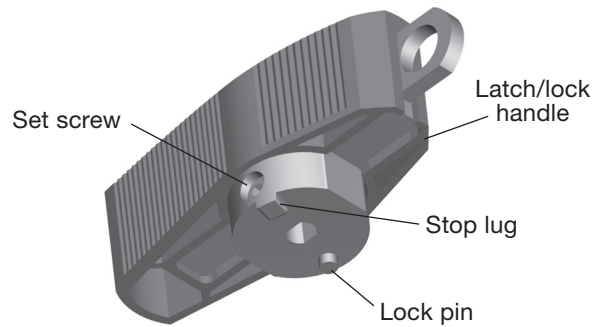


Handle Reassembly

1. Install the **detent plate** as shown. The relief on the bottom of the detent plate fits over the **handle stop** on the valve body.

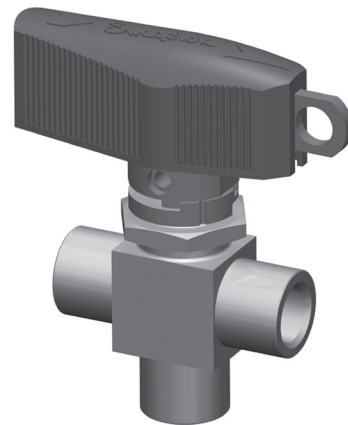


2. Align the **set screw** of the latch/lock handle with the **stem flat** (use **large flat** if stem has two flats).
3. Slide the **latch/lock handle** down the stem until the handle rests on the **detent plate**. The **stop lug** should be located in the **stop lug recess**.
 - **X, XHL patterns only:** **Lock pin** should be in **lock pin recess** or in either side of the **stop lug recess**, depending on the direction of the handle.
 - **XH, XL patterns only:** **Lock pin** should be in one of the two **lock pin recesses**.



Underside view of latch/lock handle
43G series

4. Tighten the **set screw** to 30 to 35 in.-lb (3.4 to 4.0 N·m).
5. Test **valve** and **handle** for proper operation.



43G series

Note: Packing adjustments may be required during the service life of the valve to prevent leakage. See instructions for Swagelok 40 series valves, MS-INS-40, or 40G series valves, MS-INS-40G, for details.

⚠ WARNING

Do not mix/interchange Swagelok products or components not governed by industrial design standards, including Swagelok tube fitting end connections, with those of other manufacturers.