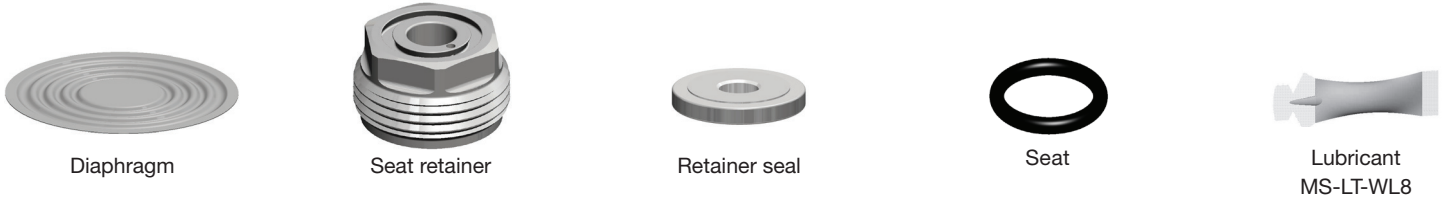


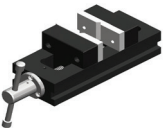



KFB Series Regulators Maintenance Instructions



Kit Contents



Tools Required

Tool	Size	Component
 Vise	-	Body
 Socket	18 mm	Seat retainer
	11/16 in. or 17 mm	Antitamper nut
 Torque wrench	Capable of 273 ft·lb (370 N·m, 37,8 m·kg)	Seat retainer, Cap ring
Tool Kit		
 Large cap ring spanner	2 7/8 in. or 73 mm	Cap ring

NOTE: See *Pressure Regulators*, MS-02-230, for tool kit ordering information.

Symbols

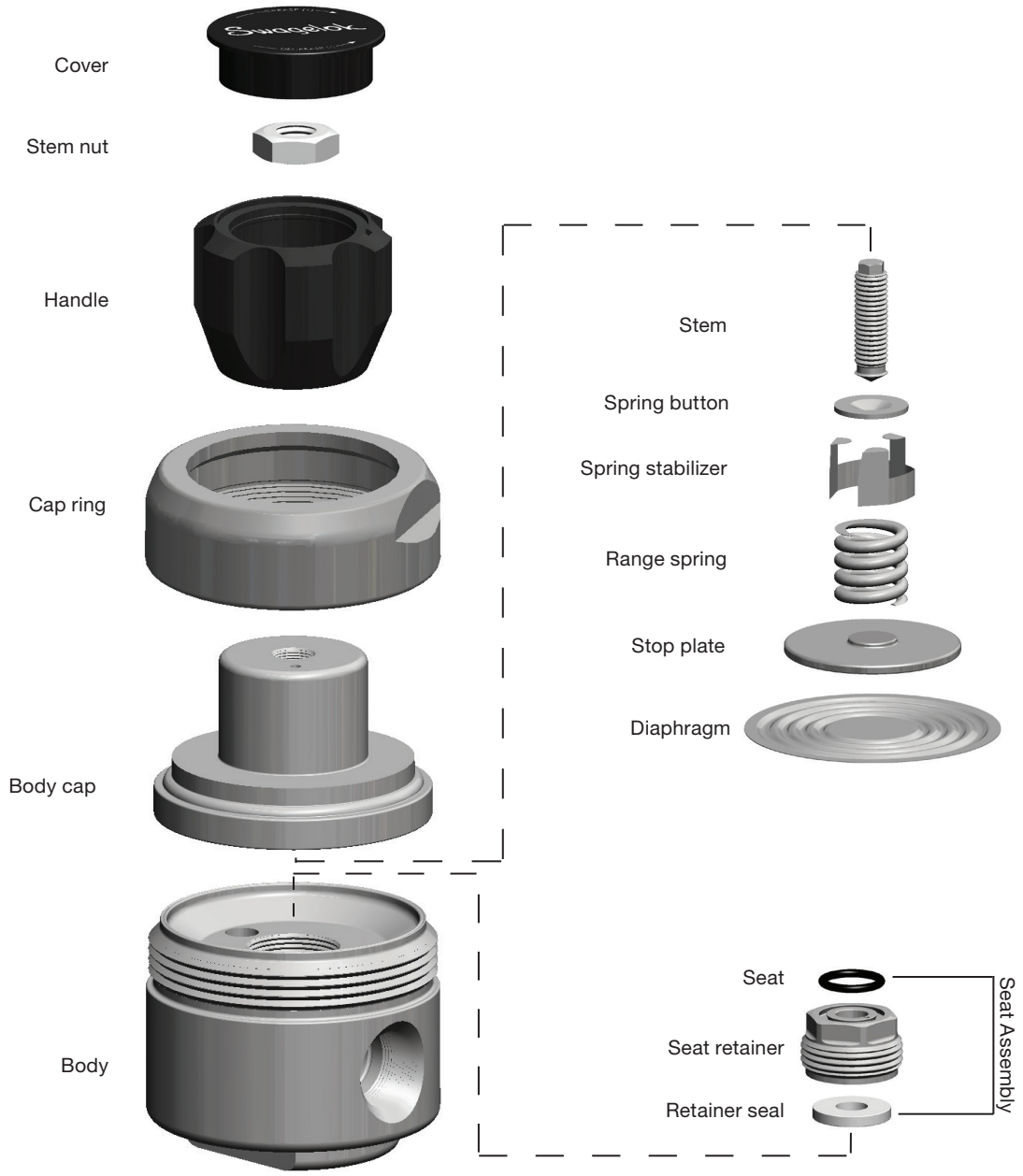


Discard



Lightly lubricate

Exploded View



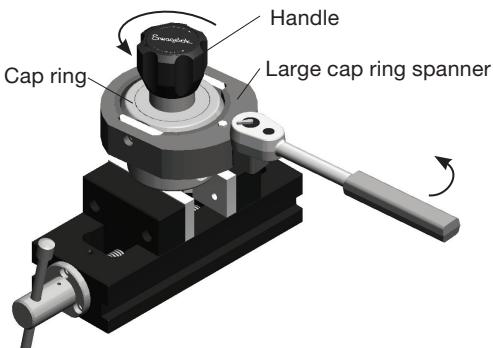
⚠WARNING

Before removing a regulator from the system for service, you must

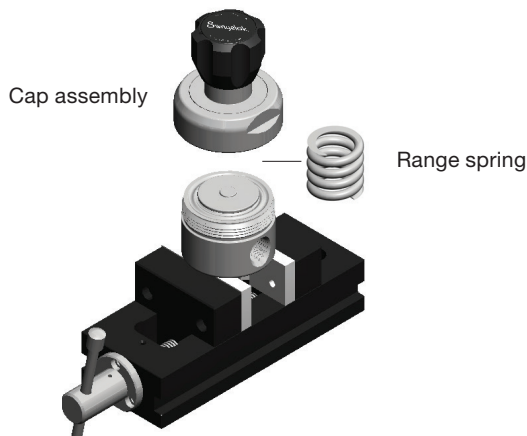
- depressurize system
- purge the system to remove any residual system media left in the regulator.

Disassembly

1. Place the regulator in a vise.
2. Turn the **handle** counterclockwise until it stops.
Note: Handle and stem nut position are factory set. If they are removed, they will have to be reset to that position.
Note: If using an antitamper nut, remove it from the body. Then turn the stem counter clockwise until it stops.
3. Loosen the **cap ring**.



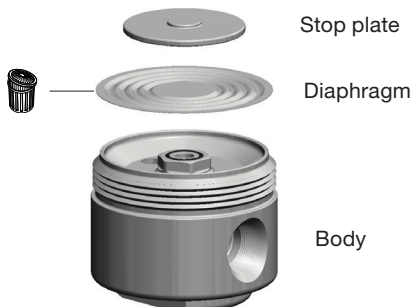
4. Remove the **cap assembly** and handle as one piece and set aside for later use.
Note: The **range spring** may fall from the cap assembly when lifted. Set aside for later use.



5. Remove the **diaphragm** and the **stop plate**.

NOTICE

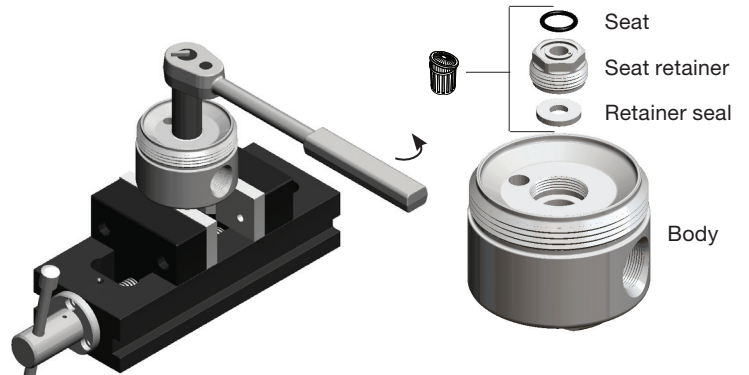
Do not damage the diaphragm sealing face on the body. Leakage could result.



6. Loosen and remove the **seat assembly**. Discard the seat, seat retainer, and the retainer seal.

NOTICE

Be careful not to scratch the inside of the body. Leakage could result.

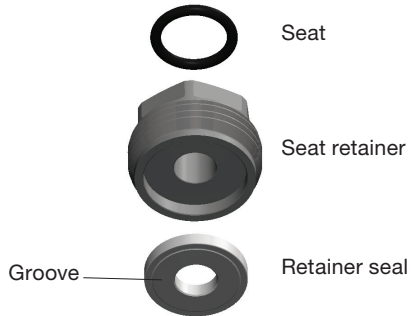


Reassembly

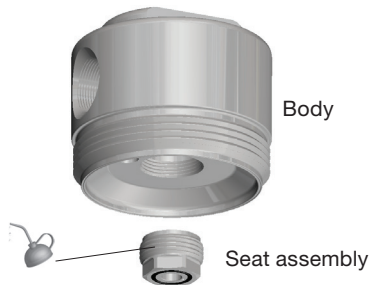
NOTICE

Ensure all parts and tools are free of debris or damage.

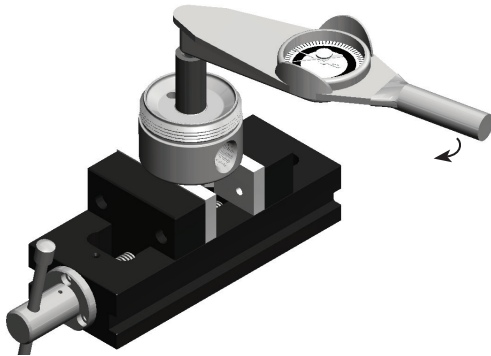
7. Insert the **retainer seal** with the groove facing away from the **seat retainer** and the **seat** into the seat retainer.



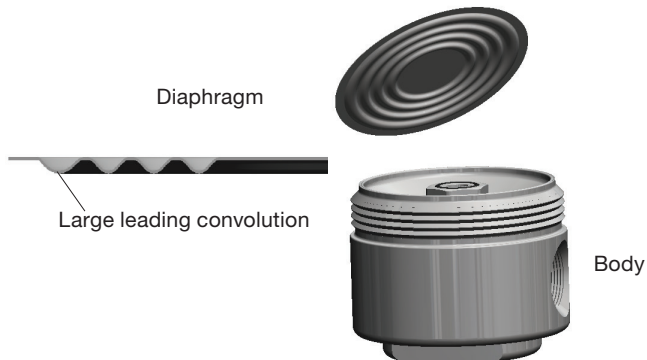
8. Fully thread the **seat assembly** into the **body**.



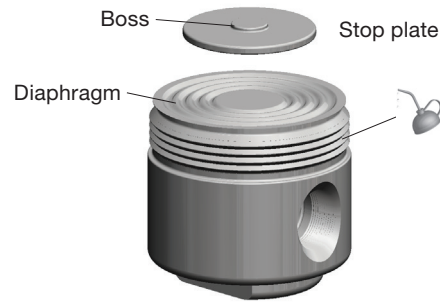
9. Tighten the **seat assembly** to 30 ft·lb (40 N·m, 4 m·kg).



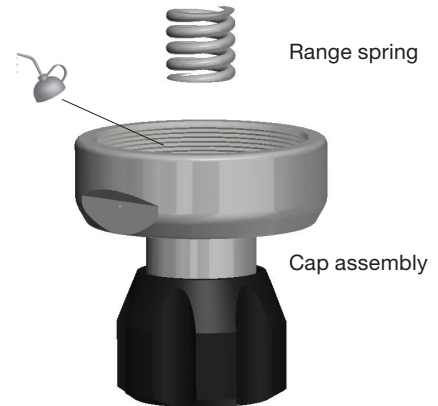
10. Install the **diaphragm** with the large leading convolution facing towards the **body**.



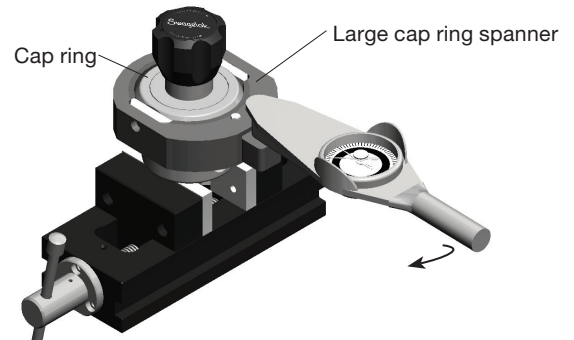
11. Install the **stop plate** onto **diaphragm** with the **boss** on the stop plate facing away from the diaphragm.



12. Reinsert the **range spring** into the **cap assembly** if necessary.



13. Thread the cap assembly onto the body and tighten the **cap ring** to 273 ft·lb (370 N·m, 37,8 m·kg).



14. Test the regulator for proper operation.

15. If using an antitamper nut, thread the antitamper nut onto the stem after the set outlet pressure is reached. Tighten the nut to 13 ft·lb (17.5 N·m, 1.8 m·kg).

For additional information, see swagelok.com.